



Universidade Federal do Rio Grande  
Instituto de Ciências Biológicas  
Pós-graduação em Biologia de  
Ambientes Aquáticos Continentais



**Conservação de *Austrolebias minuano*, peixe anual  
endêmico da planície costeira do Rio Grande do  
Sul ameaçado de extinção**

**Murilo de Oliveira Fernandes**

Orientador: Prof. Dr. Antonio Sergio Varela Junior  
Co-orientadora: Prof. Dra. Lizandra Jaqueline Robe

Rio Grande  
2019



Universidade Federal do Rio Grande  
Instituto de Ciências Biológicas  
Pós-graduação em Biologia de Ambientes  
Aquáticos Continentais



## **Conservação de *Austrolebias minuano*, peixe anual endêmico da planície costeira do Rio Grande do Sul ameaçado de extinção**

**Aluno:** Murilo de Oliveira Fernandes

**Orientador:** Prof. Dr. Antonio Sergio Varela Junior

**Co-Orientadora:** Prof. Dra. Lizandra Jaqueline Robe

Dissertação apresentada ao Programa de Pós-graduação em Biologia de Ambientes Aquáticos Continentais como requisito parcial para a obtenção do título de Mestre em Biologia de Ambientes Aquáticos Continentais.

Rio Grande  
2019

*Aos meus pais, ao Felipe e aos verdadeiros  
amigos que sempre torceram por mim.  
Dedico esta conquista.*

## **AGRADECIMENTOS**

Aos meu pais, Josiane e Francelino e Maria José e Adjalma, pelo amor incondicional, carinho, atenção e paciência. Por sempre estarem por perto me apoiando, pelas noites não/mal dormidas, porque estavam me ajudando ou preocupados comigo. Por sempre me ensinarem que não importa o problema, sempre haverá uma solução se você correr atrás dela. Por me ensinarem a nunca desistir dos meus sonhos. Vocês são meus exemplos de vida e minha base. Amo vocês incondicionalmente!

Ao meu namorado, Felipe Ferreira, por sempre me apoiar e me amparar nessa etapa tão importante da minha vida. Pelo seu amor, carinho e zelo. Por me permitir fazer parte da sua vida, tornando-me uma pessoa muito melhor após conviver esses anos com você. Obrigado por ser essa pessoa admirável, inteligente e íntegra.

À minha amiga e família, Daiana Garcez, obrigado por tornar tudo isso possível e fazer de mim uma pessoa melhor. É impossível citar todos os momentos em que você se fez presente durante esses dois anos, mas agradeço pela paciência (que não foi pouca), tranquilidade para tirar meus imensuráveis questionamentos (sabemos, também, que não foram poucos) e por ser tão parecida comigo em inúmeros aspectos. Com você por perto os problemas se tornavam menos pesados e mais aceitáveis.

Ao meu Orientador, Antonio Sergio, pela liberdade de ação e por me aceitar como orientado.

À minha Co-Orientadora, Lizandra Robe, por me permitir fazer parte de um grupo de estudos maravilhoso e por dividir seu vasto conhecimento comigo. Por me ensinar que foco e objetivo são necessários para alcançar o produto final. Obrigado pelas conversas pessoais, pelos conselhos, ajuda e o mais importante, não me abandonar no momento que mais precisei de alguém. Você foi e sempre será nossa “fada”.

À minha fiel amiga, Thaísa Bozzetti, que compõe o tripé da amizade verdadeira (Merece!). Obrigado por se fazer presente em cada momento e por acreditar que tudo daria certo no final, te amo.

Às amizades e parcerias formadas no Laboratório de Genética e no PPGBAC, Gih, Ana, Manu's, Tuca, Gabi, Cris, Sabrina, Edu, Daiane, Bruna, Adri, Maibys, Cami e outros, que nunca estiveram ausentes, agradeço pelo carinho que sempre me disponibilizaram.

Ao Fran, que mesmo comendo uma versão dessa dissertação, me trouxe paz e alegria para conseguir concluir o mestrado.

À Universidade Federal do Rio Grande e ao Programa de Pós-Graduação em Biologia de Ambientes Aquáticos Continentais, por conceder a oportunidade de realização deste trabalho.

À Capes pelo apoio financeiro na realização deste trabalho e pela bolsa de mestrado.

## RESUMO

A vulnerabilidade dos ambientes aquáticos sazonais, devido à ação antropogênica, tem levado à perda da diversidade e do patrimônio genético existente. Neste contexto, os peixes anuais representam 30% da ictiofauna ameaçada no Brasil e são totalmente dependentes da integridade física do seu biótopo. Dentre esses peixes, *Austrolebias minuano* é endêmica e considerada ameaçada de extinção devido à perda e degradação do seu habitat. Para estabelecer estratégias de conservação, estudos que visem compreender os níveis e a distribuição geográfica da variação genética são necessários. A partir deste conhecimento, pode-se, por exemplo, escolher as populações mais adequadas para a criopreservação espermática, uma estratégia que visa a estocagem e manutenção do material genético. Assim, o presente estudo tem como objetivo desenvolver a aplicação de potencial estratégia de conservação *in situ* e *ex situ* de *A. minuano*, a partir do conhecimento dos padrões de distribuição da diversidade genética da espécie. A fim de inferir potenciais populações-alvo para conservação, padrões de distribuição da variabilidade genética foram mensurados utilizando dois genes mitocondriais (*cyt b* e CO1) e um gene nuclear (ENC1) em seis populações de *A. minuano*. Também foram avaliados os efeitos de diferentes crioprotetores intracelulares em diferentes concentrações nos parâmetros de qualidade espermática. As análises genéticas mostraram que *A. minuano* pode ser dividida em pelo menos duas espécies, uma das quais contém a população do espécime tipo da espécie e pode ser considerada *A. minuano* *sensu stricto*. No processo de criopreservação, essa população foi escolhida e o crioprotetor metilglicol apresentou resultados promissores para ambos parâmetros avaliados. Assim, o uso da técnica de criopreservação se mostrou efetiva para a manutenção e armazenamento do material genético da espécie. *In situ*, no entanto, ficou claro que medidas individuais de preservação para todas as linhagens avaliadas são extremamente necessárias.

**Palavras-chave:** Biodiversidade; criopreservação; filogenia; killifish

## ABSTRACT

The vulnerability of seasonal aquatic environments, due to anthropogenic action, has led to the loss of diversity and existing genetic patrimony. In this context, annual fish represent 30% of the ichthyofauna threatened in Brazil and are totally dependent on the physical integrity of its biotope. Among these fish, *Austrolebias minuano* is an endemic species and considered endangered due to the loss and degradation of its habitat. To establish conservation strategies, studies that aim to understand the levels and geographical distribution of genetic variation are necessary. From this knowledge, is possible, for example, choose the populations most suitable for sperm cryopreservation, a strategy that aims at the storage and maintenance of genetic material. Thus, the present study aims to develop the application of a potential in situ and ex situ conservation strategy of *A. minuano*, based on knowledge of the distribution patterns of the species' genetic diversity. In order to infer potential target populations for conservation, patterns of distribution of genetic variability were measured using two mitochondrial genes (*cyt b* and CO1) and one nuclear gene (ENC1) in six populations of *A. minuano*. The effects of different intracellular cryoprotectants at different concentrations on sperm quality parameters were also evaluated. Genetic analyzes showed that *A. minuano* can be divided into at least two species, one of which contains the population of the specimen type of the species and can be considered *A. minuano* sensu stricto. In the cryopreservation process, this population was chosen and the cryoprotectant methyl glycol presented promising results for both evaluated parameters. Thus, the use of the cryopreservation technique proved effective for the maintenance and storage of the genetic material of the species. In situ, however, it has become clear that individual preservation measures for all lineages evaluated are extremely necessary.

**Key-words:** Biodiversity; cryopreservation; killifish; phylogeny

## **APRESENTAÇÃO**

Esta dissertação está dividida em três segmentos, o primeiro é referente à introdução geral sobre o tema proposto e às referências utilizadas. O segundo segmento é representado pelo primeiro capítulo, que caracteriza avaliações genéticas para escolha da população adequada para o procedimento de criopreservação, que será submetido na revista *Reviews in Fish Biology and Fisheries*, seguindo as normas da revista. O terceiro segmento apresentado é o segundo capítulo, abrangendo os procedimentos de criopreservação, onde o artigo será submetido à revista *Aquaculture Research* já formatado conforme as normas da revista.



## SUMÁRIO

<b>INTRODUÇÃO GERAL</b> .....	13
1 Áreas úmidas.....	13
2 Peixes anuais.....	13
2.1 Caracterização, ciclo de vida, diversidade e distribuição.....	14
2.2 Família Rivulidae.....	16
2.3 Gênero <i>Austrolebias</i> .....	17
2.4 <i>Austrolebias minuano</i> .....	18
3 Conservação.....	18
3.1 Diversidade Genética.....	19
3.2 Criopreservação.....	19
<b>OBJETIVOS</b> .....	23
<b>REFERÊNCIAS</b> .....	24
<b>CAPÍTULO 1</b> .....	33
Abstract.....	35
Introduction.....	36
Material and methods.....	39
<i>Ethics statement</i> .....	39
<i>Study area</i> .....	39
<i>Samplings</i> .....	39
<i>DNA sequences</i> .....	39
<i>Data analysis</i> .....	40
Results.....	42
<i>Genetic diversity and population structure</i> .....	43
<i>Spatiotemporal scenario</i> .....	47
Discussion.....	49
References.....	53
Supplementary Material.....	53

<b>CAPÍTULO 2</b> .....	65
ABSTRACT .....	67
1 INTRODUCTION.....	68
2 MATERIALS AND METHODS .....	70
2.1 <i>Animals and semen collection</i> .....	70
2.1.2 <i>Experimental design</i> .....	71
2.2 <i>Analysis of spermatic kinetics</i> .....	71
2.3 <i>Flow cytometry analyses</i> .....	72
2.3.1 <i>Mitochondrial Functionality</i> .....	72
2.3.2 <i>Membrane functionality and Cellular disruption</i> .....	73
2.3.3 <i>Fluidity membrane</i> .....	73
2.3.4 <i>DNA fragmentation index</i> .....	73
2.3.5 <i>Concentration of reactive oxygen species (ROS)</i> .....	74
2.3.6 <i>Lipid peroxidation (LPO)</i> .....	74
2.4 <i>Statistical Analyzes</i> .....	74
3 RESULTS.....	75
4 DISCUSSION .....	78
REFERENCES.....	82
<b>CONCLUSÕES E PERSPECTIVAS</b> .....	90

## LISTA DE FIGURAS

1		
2		
3	<b>Figura 1.</b> Espécimes de <i>Austrolebias minuano</i> amostrados em charco localizado no município de	
4	São José do Norte, estado do Rio Grande do Sul. O macho da espécie (M) caracteriza-se pelos	
5	pares de linhas escuras em seu corpo e por ser maior em relação a fêmea (F).....	14
6		
7	<b>Figura 2.</b> Esquema de ciclo de vida de <i>Austrolebias myersi</i> (Dahl, 1958), 1) entre os meses de	
8	julho a outubro, acontece o período de desova; 2) durante a desova, os peixes depositam seus ovos	
9	na porção de solo e estes permanecem em diapausa até o próximo período chuvoso; 3) no período	
10	de seca, todos os adultos morrem; 4) os ovos eclodem após a chegada de chuva no biótopo; 5) as	
11	larvas crescem de forma acelerada; 6) dentre a sexta e oitava semana os peixes anuais atingem a	
12	maturidade sexual. Fonte: Wourms (1972).....	15
13		
14	<b>Figure 1.</b> (a) Collection points and areas of occurrence recorded for <i>A. minuano</i> sensu lato (yellow)	
15	and <i>A. pongondo</i> (purple). (b) Median-joining networks of the 47 <i>cyt b</i> haplotypes, (c) 51 CO1	
16	haplotypes, (d) 43 CO1 and <i>cyt b</i> concatenated haplotypes, and (e) 52 ENC1 alleles. The size of	
17	each circle is proportional to haplotype frequencies, and colors refer to the main population groups	
18	recovered in this study (see Results).....	38
19		
20	<b>Figure 2.</b> Bayesian chronophylogenetic tree based on <i>cyt b</i> , CO1 and ENC1 sequences sampled	
21	for <i>A. minuano</i> sensu lato e <i>A. pongondo</i> . Values above the branches represent support values,	
22	given by posterior probabilities values in BA. Values below the branches represent mean and 95%	
23	confidence intervals of divergence or diversification dates, as reconstructed in Beast. Groups of	
24	populations were represented by their respective names and colors (see other figures).....	48
25		
26	<b>Figure S 1.</b> Phylogenetic tree generated from the amplification of the mitochondrial CO1 gene in	
27	<i>Austrolebias minuano</i> .....	63
28	<b>Figure S 2.</b> Phylogenetic tree generated from the amplification of the mitochondrial <i>cyt b</i> gene in	
29	<i>Austrolebias minuano</i> .....	64
30		
31	<b>Fig. 1.</b> Species of <i>Austrolebias minuano</i> , withdrawal from the locality type Ilha do Leonídeo, state	
32	of Rio Grande do Sul - Brazil. The male of the species (A) is characterized by pairs of dark lines	
33	in its body and the female (B) for its smooth lines in the body. ....	69
34		

35 **LISTA DE TABELAS**

36

37 **Table 1.** CO1 + Cyt *b* genetic diversity estimates and neutrality tests of each of the four clusters  
38 suggested in this study (see Results). ..... 44

39  
40 **Table 2.** CO1 + Cyt *b* pairwise fixation indices (FST) between the four clusters suggested in this  
41 study. .... 44

42  
43 **Table 3.** Net Tamura 3-parameters distances between the four clusters suggested in this study, as  
44 measured by cyt *b* (below diagonal) and COI (above diagonal). ..... 45

45  
46 **Table 4.** ENC1 genetic diversity estimates and neutrality tests of each of the four clusters  
47 suggested in this study (see Results). ..... 46

48  
49 **Table 5.** ENC1 pairwise fixation indices (FST) between the four clusters suggested in this study.  
50 ..... 46

51  
52 **Table S 1.** Summary of sampling localities, with their respective identification codes, geographical  
53 coordinates and amplified genes ..... 59

54  
55 **Table - 1.** Analyses of total motility, progressive motility, mean distance traveled, curvilinear  
56 distance, rectilinear distance, lateral head displacement and frequency of cross flagellar beating of  
57 *Austrolebias minuano* (Costa & Cheffe, 2001), with dimethylsulfoxide, glycerol and methyl glycol  
58 alcohols at different concentrations (mean ± standard error)..... 75

59  
60 **Table - 2.** Analyses of mitochondrial functionality, membrane functionality, cellular disruption,  
61 fluidity membrane, DNA fragmentation index, concentration of reactive oxygen species and lipid  
62 peroxidation of *Austrolebias minuano* (Costa & Cheffe, 2001), with dimethylsulfoxide, glycerol  
63 and methyl glycol alcohols at different concentrations (mean ± standard error)..... 77

64

65

66

67

68

69

## 70 **INTRODUÇÃO GERAL**

71

### 72 **1 Áreas úmidas**

73

74           Devido às inúmeras tentativas de criação de uma definição para áreas úmidas, a Convenção  
75 de Ramsar de 1971 deliberou áreas úmidas como “extensões de brejos, pântanos e turfeiras, ou  
76 superfícies cobertas de água, sejam de regime natural ou artificial, permanentes ou temporárias,  
77 estancadas ou correntes, doces, salobras ou salgadas, incluindo as extensões de água marinha cuja  
78 profundidade na maré baixa não exceda os seis metros”, sendo esta a definição mais aceita  
79 atualmente.

80           No estado do Rio Grande do Sul, as áreas úmidas vêm se destacando por sua elevada  
81 diversidade biológica (MITSCH; GOSSELINK, 2000). Esses ambientes são fonte de numerosos  
82 recursos naturais para a humanidade. Nesse sentido, esses ambientes vêm sendo intensivamente  
83 utilizados e modificados pela sociedade, em vista de seu uso na agricultura, nas indústrias, na  
84 recreação, no controle de inundações, no transporte, na purificação de dejetos (animais e  
85 industriais) e na geração de energia (BARON, 2002). A utilização exacerbada dos recursos  
86 hídricos e o impacto das mudanças climáticas vêm causando grandes alterações nesses ambientes  
87 (MALMQVIST; RUNDLE, 2002), tornando assim possível a extinção de muitos organismos  
88 (JUNK et al., 2014).

89           Dentre os tipos de áreas úmidas, os ambientes temporários, são considerados notadamente  
90 vulneráveis. No Rio Grande do Sul pequenas áreas úmidas temporárias são abundantes,  
91 especialmente na Planície Costeira (MALTCHIK et al., 2004) e abrigam inúmeras espécies  
92 ameaçadas de extinção. A perda de uma determinada espécie ocasiona não apenas um prejuízo ao  
93 patrimônio genético, mas uma interrupção na cadeia trófica, afetando gravemente a viabilidade  
94 dos diferentes ecossistemas. Compreendidos neste contexto, tem-se os peixes, que compõem  
95 grande parte da biodiversidade aquática e que, apesar de serem caracterizados como organismos  
96 com grande capacidade adaptativa, representam um dos grupos animais mais ameaçados de  
97 extinção (AGOSTINHO, 1999; DUDGEON et al., 2006; SILVA; DEUS; HILSDORF, 2006).  
98 Dentro deste grupo, se destacam os peixes anuais, que devido à perda e fragmentação de ambientes  
99 aquáticos temporários ou permanentes de água doce, vem sendo considerados em maior  
100 vulnerabilidade (FONTANA, 2003).

101

### 102 **2 Peixes anuais**

103

## 2.1 Caracterização, ciclo de vida, diversidade e distribuição

104  
105  
106 Peixes anuais incluem um diversificado grupo de peixes que chamam atenção pelo seu  
107 desenvolvimento e características evolutivas diferenciadas. Myers (1952), visando a inferência de  
108 um termo que abrangesse o ciclo de vida curto, deu o nome de “peixes anuais” aos vertebrados  
109 pertencentes a esse grupo. De acordo com Costa (2008), em peixes anuais, a ordem  
110 Cyprinodontiformes se encontra dividida em duas famílias taxonômicas, que ocorrem na África  
111 (Nothobranchiidae) e na América do Sul (Rivulidae). Evolutivamente, esses táxons são  
112 considerados como grupos irmãos, compartilhando muitas características fisiológicas, biológicas  
113 e ecológicas (COSTA, 1998). Espécies pertencentes a essas famílias exibem tamanho reduzido e  
114 geralmente são sexualmente dimórficas e dicromáticas, onde os machos costumam ser maiores,  
115 com nadadeiras mais desenvolvidas e padrões de cores mais atraentes (COSTA, 2008;  
116 REICHARD et al., 2009) (Fig. I).

117

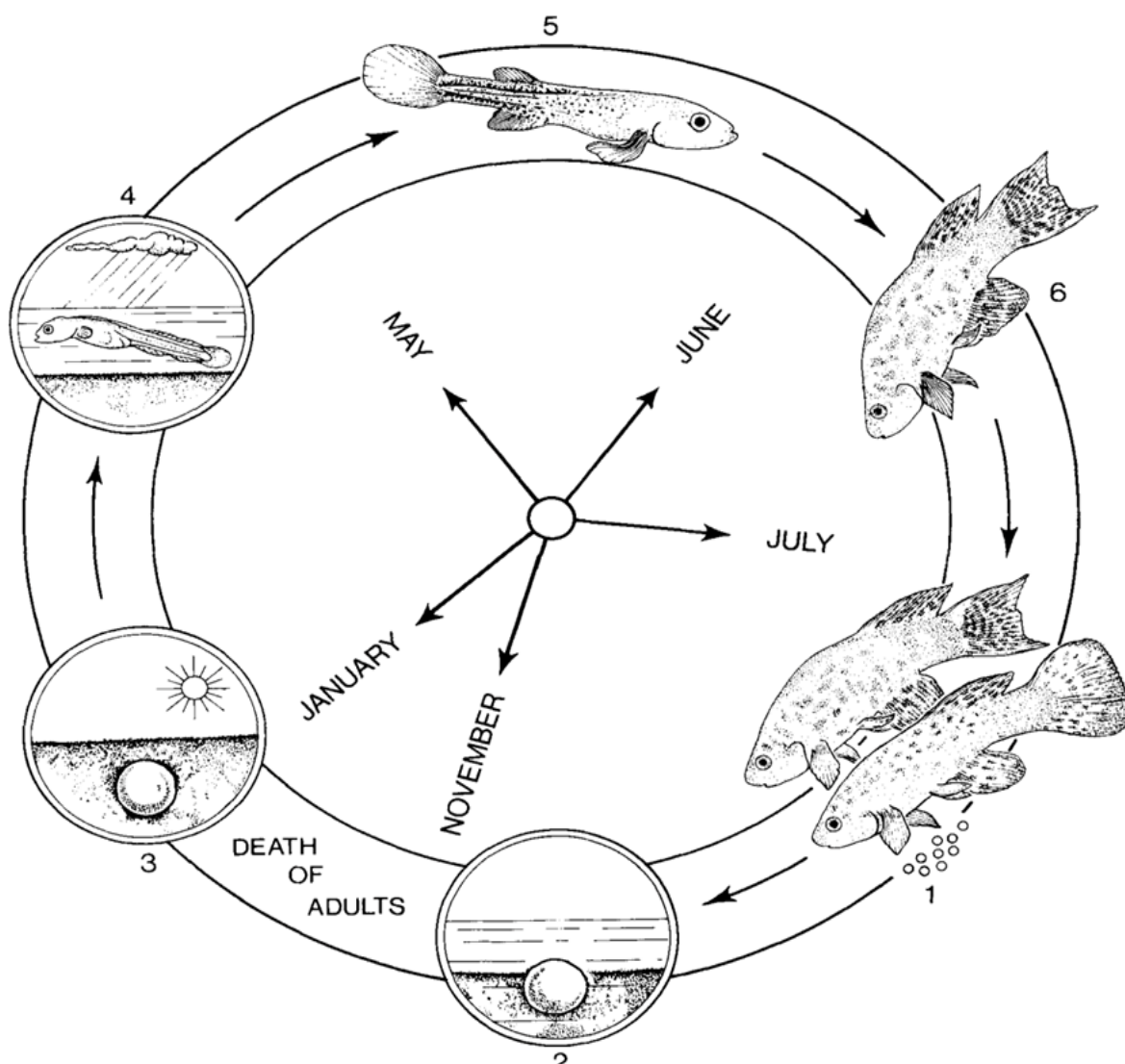


118  
119 **Figura 1.** Espécimes de *Austrolebias minuano* amostrados em charco localizado no município de São José do Norte,  
120 estado do Rio Grande do Sul. O macho da espécie (M) caracteriza-se pelos pares de linhas escuras em seu corpo e por  
121 ser maior em relação a fêmea (F).

122  
123 São espécies que podem ser encontradas em ambientes aquáticos sazonais, brejos, charcos  
124 e lagoas rasas, que são formados somente em estações chuvosas e que permanecerão secos por um

125 período do ano (SÁNCHEZ et al., 2014). Uma das características mais importantes para a  
126 sobrevivência dos peixes anuais nesses ambientes é a capacidade de entrar em diapausa  
127 (MURPHY; COLLIER, 1997), característica observada nos seus ovos. Após atingirem a  
128 maturidade sexual, os adultos se reproduzem continuamente, e seus ovos são enterrados em até 15  
129 cm de profundidade (VAZ-FERREIRA; SORIANO; SEÑORANS, 1966), ali permanecendo  
130 durante o período de seca, à espera da estação com as características adequadas para a eclosão e  
131 crescimento (Fig. II).

132



133  
134 **Figura 2.** Esquema de ciclo de vida de *Austrolebias myersi* (Dahl, 1958), 1) entre os meses de julho a  
135 outubro, acontece o período de desova; 2) durante a desova, os peixes depositam seus ovos na porção de  
136 solo e estes permanecem em diapausa até o próximo período chuvoso; 3) no período de seca, todos os  
137 adultos morrem; 4) os ovos eclodem após a chegada de chuva no biótopo; 5) as larvas crescem de forma  
138 acelerada; 6) dentre a sexta e oitava semana os peixes anuais atingem a maturidade sexual. Fonte: Wourms  
139 (1972).

140  
141 Costa (1998) ressalta que o aparecimento do ciclo de vida diferenciado (o anualismo) teve  
142 origem de forma independente nas famílias Nothobranchiidae e Rivulidae, sugerindo que essa  
143 homoplasia indicaria um processo de convergência adaptativa. Segundo o mesmo autor, o  
144 anualismo nos Rivulídeos está correlacionado com a colonização de biótopos periféricos em duas  
145 etapas, sendo primeiramente destacada sua ocorrência em riachos com pouca profundidade e poças  
146 permanentes, e logo em seguida em ambientes mais adjacentes e periféricos como charcos. Este  
147 mesmo autor argumenta que o anualismo constitui uma característica ancestral para Rivulidae,  
148 sendo o não anualismo verificado em determinados gêneros atuais visto como uma perda derivada  
149 do mecanismo de diapausa.

150

## 151 2.2 Família Rivulidae

152

153 Os rivulídeos pertencem à ordem Cyprinodontiformes, que conta com 10 famílias, 109  
154 gêneros e 1013 espécies (BRAY, 2017). Rivulidae constitui a quarta maior família de peixes que  
155 ocorrem em ambientes de água doce da região neotropical, com cerca de 38 gêneros e 350 espécies  
156 descritas, sendo encontradas na América do Sul, Central e sul dos Estados Unidos (COSTA, 2008).  
157 Na América Central, se distribuem entre a região central do México e Panamá e ao longo das  
158 drenagens do Pacífico, na Costa Rica e no Panamá. Na América do Sul, a família é largamente  
159 distribuída, sendo encontrada do norte da Venezuela ao sul da Argentina, no Brasil, Paraguai e  
160 Uruguai. No entanto, a maior diversidade de rivulídeos é encontrada no Brasil, país que exibe  
161 cerca de um terço das espécies (COSTA, 2008). Volcan et al., (2015) destacam que pelo menos  
162 37 espécies de Rivulidae são encontradas no estado do Rio Grande do Sul, Brasil, das quais 31  
163 pertencem ao gênero *Austrolebias*.

164 Alguns autores afirmam que a combinação do ciclo de vida especializado, o tamanho  
165 corporal reduzido, a área de distribuição limitada, a baixa capacidade de dispersão e a ampla  
166 destruição das áreas úmidas, torna essas espécies mais vulneráveis à extinção (COSTA, 2008;  
167 COSTA et al., 2002; FONTANA; BENCKE; REIS, 2003; LANÉS, 2010; ROSA; LIMA, 2008).  
168 Conforme a IUCN (International Union for Conservation of Nature), no Livro Vermelho da Fauna  
169 Brasileira Ameaçada de Extinção, dentre as 135 espécies de peixes de água doce consideradas  
170 ameaçadas de extinção no Brasil, a maior parte (38,5%) é composta por indivíduos pertencentes à  
171 família Rivulidae (ROSA & LIMA, 2008). Além do mais, cerca de 70% das espécies de peixes de  
172 água doce ameaçadas de extinção no Rio Grande do Sul são rivulídeos (SEMA, 2014).



173 Considerando-se o *status* de ameaça apresentado por muitas espécies de rivulídeos, é  
174 fundamental que diferentes estratégias de conservação sejam adotadas, a fim de se criar  
175 possibilidades de preservar a diversidade de espécies. Visando definir parâmetros de conservação  
176 para as espécies brasileiras de peixes anuais, foi elaborado o PAN – Rivulídeos (Plano de Ação  
177 Nacional para a Conservação dos Peixes Rivulídeos Ameaçados de Extinção), que almeja  
178 estabelecer formas de proteção a esse grupo, tentando anular a perda de habitats (ICMBIO, 2012a),  
179 e tornando viável a elaboração de técnicas e estudos para garantir a preservação dos mesmos. Essas  
180 estratégias de preservação são, a grosso modo, distribuídas em conservação *in situ* e *ex situ*, de  
181 acordo com o sítio de manutenção do recurso preservado: enquanto que a primeira mantém o  
182 recurso genético protegido em seu local de origem, a segunda mantém o material genético  
183 preservado em um local fora da área de origem (CAROLSFELD et al., 2003). O PAN – Rivulídeos  
184 considera 52 espécies de peixes rivulídeos ameaçados de extinção no Brasil, sendo classificadas  
185 de acordo com os critérios da IUCN e publicadas no Volume II do Livro Vermelho da Fauna  
186 Brasileira Ameaçada de Extinção, em 2008. A lista contempla 64 espécies como focais na primeira  
187 edição do plano de ação (2012-2017), sendo 12 espécies pertencem ao gênero *Austrolebias*, a saber  
188 que *Austrolebias minuano* está contemplada para o segundo ciclo do plano (ICMBIO, 2012b).

189

### 190 2.3 Gênero *Austrolebias*

191

192 O gênero compreende indivíduos encontrados durante as temporadas de clima frio e alta  
193 precipitação na Argentina, Sul do Brasil, Paraguai, Uruguai e em alguns rios da Amazônia  
194 (LOUREIRO, 2015; NIELSEN e PILLET, 2015). Por serem espécies de periodicidade curta, os  
195 indivíduos de *Austrolebias* atingem a maturidade sexual em poucas semanas (ERREA;  
196 DANULAT, 2001; WALFORD; LIU, 1965), tipicamente em torno de 6 a 8 semanas (LIU;  
197 WALFORD, 1970). Segundo Costa (2006) e García (2006), *Austrolebias* apresenta cinco grupos  
198 de espécies, nomeados de acordo com a identidade de sua primeira espécie descrita (*A. robustus*,  
199 *A. elongatus*, *A. alexandri*, *A. bellottii* e *A. adloffii*), e três espécies basais (*A. luteoflammulatus*, *A.*  
200 *gymnoventris* e *A. jaegari*).

201 A maioria das espécies do gênero, tais como, *Austrolebias adloffii* Ahl, 1922 (COSTA &  
202 CHEFFE, 2001), *Austrolebias charrua* (COSTA & CHEFFE, 2001), *Austrolebias cyaneus*  
203 (AMATO, 1987), *Austrolebias jaegari* (COSTA et al., 2002), *Austrolebias litzi* (COSTA, 2006),  
204 *Austrolebias luteoflammulatus* (VAZ-FERREIRA; SIERRA; SCAGLIA, 1964), *Austrolebias*  
205 *melanoorus* (AMATO, 1986), *Austrolebias minuano* (COSTA & CHEFFE, 2001), *Austrolebias*  
206 *nachtigalli* (COSTA, 2006), *Austrolebias nigrofasciatus* (COSTA & CHEFFE, 2001),

207 *Austrolebias paucisquama* (FERRER; MALABARBA; COSTA, 2008), *Austrolebias prognathus*  
208 (AMATO, 1986), *Austrolebias univentripinnis* (COSTA & CHEFFE, 2005), *Austrolebias*  
209 *wolterstorffi* Ahl, 1924 (COSTA & CHEFFE, 2001), *Austrolebias pelotapes* e *Austrolebias*  
210 *pongondo* (COSTA et al. 2017), são encontradas, exclusivamente, no sistema hidrográfico Patos-  
211 Mirim.

212 Devido a diversidade de espécies, suas especificidades em relação ao seu habitat e à  
213 utilização de invertebrados como principal recurso alimentar, espécies de *Austrolebias* são de  
214 fundamental importância para o equilíbrio do ecossistema (VOLCAN et al., 2011). Segundo  
215 Furness (2016), por serem extremamente adaptadas e dependentes da integridade física do seu  
216 biótopo, essas espécies se tornam modelos evolutivos de estudo bioecológicos, relacionados a sua  
217 plasticidade fenotípica, tolerância fisiológica e alta capacidade adaptativa.

218

#### 219 2.4 *Austrolebias minuano*

220

221 O grupo *A. adloffii* inclui oito espécies de ocorrência restrita ao sul do Brasil (COSTA,  
222 2006; VOLCAN, 2009), dentre as quais, *Austrolebias minuano*, que é considerada uma espécie de  
223 pequeno porte, cujos indivíduos tem, em média, 4,7 cm ao atingirem a maturidade sexual (6-8  
224 semanas) (COSTA & CHEFFE, 2001). Na espécie é possível diferenciar o macho da fêmea através  
225 de características físicas bem delimitadas que evidenciam seu dimorfismo sexual. Enquanto que o  
226 macho apresenta em seu corpo pares verticais de listras, que se alternam entre um tom mais claro  
227 e um mais escuro de escamas, não se observa na fêmea a incidência do mesmo padrão de cores  
228 (Figura 1). De acordo com Costa (2006), esta espécie é endêmica de charcos do Sistema Lagunar  
229 Patos-Mirim, Rio Grande do Sul, tendo sido coletada previamente em charcos localizados nos  
230 municípios de Rio Grande, São José do Norte e Tavares. Assim como diversas outras espécies de  
231 *Austrolebias*, *A. minuano* figura nas listas nacionais e estaduais de espécies ameaçadas de extinção  
232 (FONTANA, 2003; ICMBIO, 2012b; SEMA, 2014), e é uma das espécies focais do PAN –  
233 Rivulídeos (ICMBio, 2012).

234 Recentemente, uma das populações previamente atribuídas à *A. minuano* foi descrita como  
235 uma nova espécie do grupo, *A. pongondo* (COSTA; CHEFFE; AMORIM, 2017). Esta parece  
236 exibir uma distribuição endêmica ao município de Rio Grande, e é morfológicamente distinta de  
237 *A. minuano* por apresentar múltiplas fileiras de pontos azuis e nenhuma zona cinzenta escura na  
238 porção posterior da barbatana dorsal (COSTA; CHEFFE; AMORIM, 2017).

239

### 240 3 Conservação

241  
242           Ambientes temporários têm sido drasticamente destruídos, tanto para o uso agrícola como  
243 em áreas em processo de urbanização e desmatamentos. Devido às altas taxas de perda de  
244 componentes da biodiversidade e visando o incremento de esforços voltados à conservação dos  
245 recursos biológicos, são necessários estudos que visem mitigar os danos promovidos pela ação  
246 antrópica no ambiente (VOLCAN, 2009). Nesse sentido, a conservação *in situ* refere-se à  
247 conservação do habitat natural e a reconstituição de populações de espécies viáveis, permitindo a  
248 continuação dos processos evolutivos, enquanto a conservação *ex situ* envolve a manutenção fora  
249 do habitat e como principal característica a preservação genética por um período maior. Estes  
250 procedimentos são complementares e formam, estrategicamente, a base para a implementação da  
251 conservação da biodiversidade e uso dos recursos genéticos (BRASIL; MINISTÉRIO DO MEIO  
252 AMBIENTE - MMA, 2018).

253

### 254 *3.1 Diversidade Genética*

255

256           Uma linha de fatores, como taxas mutacionais, tamanho efetivo populacional e nível de  
257 fluxo gênico, está relacionada ao nível de diversidade genética apresentado por qualquer população  
258 ou espécie, bem como sua estruturação (FRANKHAM et al., 2004). Em conjunto, esses fatores  
259 podem reduzir a diversidade genética intrapopulacional, aumentando o risco de colapso  
260 mutacional (isto é, o declínio da taxa reprodutiva e espiral descendente em direção à extinção  
261 devido à fixação casual de novas mutações ligeiramente deletérias em populações pequenas) e de  
262 depressão por endocruzamento (redução na reprodução, sobrevivência ou outros caracteres  
263 quantitativos devido à endogamia) (FRANKHAM et al., 2004). Segundo o mesmo autor, todos  
264 esses padrões e processos são extremamente importantes do ponto de vista da conservação, já que  
265 podem afetar drasticamente o potencial evolutivo de uma espécie. Portanto, o estabelecimento de  
266 qualquer estratégia de conservação deve ser precedido por estudos desenhados no sentido de  
267 compreender os níveis e a distribuição geográfica da variação genética dentro do grupo-alvo.

268

### 269 *3.2 Criopreservação*

270

271           Pesquisas relacionadas à criopreservação de gametas têm avançado exponencialmente ao  
272 longo dos últimos anos (CHAKRABORTY et al., 2011; FERREIRA; MONTENEGRO;  
273 SALMITO-VANDERLEY, 2018; HAGEDORN; CARTER, 2011; HOROKHOVATSKYI et al.,  
274 2018; MACHADO et al., 2018). Esse instrumento metodológico busca viabilizar a manutenção da

275 estrutura e da funcionalidade dos gametas, através do congelamento do material genético e do seu  
276 armazenamento em bancos de germoplasma (DAY; WALKER, 2007). A célula espermática é  
277 ideal para este tipo de pesquisa, por demonstrar resistência à refrigeração e congelamento (LABBE  
278 et al., 1997).

279 No âmbito da conservação, o uso da criopreservação permite a proteção dos recursos  
280 genéticos e conservação da biologia (FIGUEROA; VALDEBENITO; FARIAS, 2016), tornando  
281 possível evitar a perda de qualquer espécie com risco de extinção. Afinal, a disponibilidade de  
282 recursos genéticos criopreservados, como espermatozoides e oócitos, pode permitir a recuperação  
283 de espécies ameaçadas, ao evitar a perda de diversidade genética, e garantir a reintrodução de uma  
284 espécie no ambiente natural, possibilitando recuperar e preservar espécies ameaçadas de extinção  
285 (CABRITA et al., 2010; MARTÍNEZ-PÁRAMO et al., 2009).

286 Em peixes, antes de ser congelado, o sêmen necessita de uma diluição em soluções com  
287 crioprotetores e diluidores. Os crioprotetores são utilizados na técnica com o intuito de preservar  
288 as estruturas celulares e prevenir as crioinjúrias dos espermatozoides, podendo ser classificados  
289 como intracelulares (internos) ou extracelulares (externos). Exercendo o papel de penetrar no  
290 interior da célula, os crioprotetores internos interferem na formação de cristais de gelo que  
291 lesionam a membrana celular (FAUSTINO et al., 2010; VARELA JUNIOR et al., 2009; VIEIRA  
292 et al., 2011), impedindo a desnaturação do DNA (KODERLE et al., 2009) e lesões mitocondriais  
293 e nos microtúbulos (HAMMERSTEDT et al., 1992).

294 De acordo com Viveiros e Godinho (2008), os crioprotetores intracelulares mais utilizados  
295 para a criopreservação de gametas de peixes são dimetilsulfóxido (DMSO) (MERYMAN, 1971;  
296 THIRUMALA et al., 2006; VARELA JUNIOR et al., 2012; VIVEIROS; GODINHO, 2009),  
297 glicerol (VARELA JUNIOR et al., 2012), e metilglicol (MARIA et al., 2006). O DMSO tem  
298 evidenciado resultados significativos no congelamento de espermatozoides de peixes  
299 (MIRZOYAN et al., 2006; SUQUET et al., 2000; VARELA JUNIOR et al., 2012; ZILLI et al.,  
300 2014), pois penetra facilmente na membrana plasmática da célula espermática, por ser altamente  
301 solúvel em meio aquoso (MACGREGOR, 1967). Este crioprotetor possui a capacidade de interagir  
302 ou combinar com ácidos nucleicos, carboidratos, lipídeos, proteínas e muitas outras substâncias  
303 sem alterar de forma irreversível a configuração molecular (SOJKA; HOPE; PEARSON, 1990).

304 O Glicerol também é largamente empregado na preservação de gametas masculinos  
305 (ALVARENGA et al., 2005) e utilizado em criopreservação de algumas espécies de peixes, como  
306 o Tambaqui (*Colossoma macropomum*) (VARELA JUNIOR et al., 2012). Porém, este álcool tem  
307 evidenciado desvantagens quando comparado a outros crioprotetores, especialmente sobre a  
308 integridade das estruturas celulares, devido ao seu peso molecular alto, alta viscosidade e nível

309 elevado de impenetrabilidade (HAMMERSTEDT; GRAHAM; CAROLINA, 1992),  
310 possivelmente devido a sua toxicidade em altas concentrações e baixa mobilidade através das  
311 membranas (MERYMAN, 1971).

312 O metilglicol também tem mostrado eficiência como crioprotetor (MARIA et al., 2006;  
313 NASCIMENTO et al., 2010; VIVEIROS; GODINHO, 2009), apresentando sucesso no  
314 congelamento de sêmen de pirapitinga *Brycon nattereri* (MARIA et al., 2006) e Suruvi,  
315 *Steindachneridion scriptum* (PEREIRA et al., 2018). O metilglicol é derivado do metanol  
316 (CH<sub>3</sub>OH) e do óxido de eteno (CH<sub>2</sub>OCH<sub>2</sub>), tendo se mostrado menos tóxico para as células  
317 espermáticas de peixes submetidas a criopreservação (VIVEIROS; GODINHO, 2009).

318 Qualquer um destes crioprotetores, por sua vez, precisam ser diluídos para serem  
319 acrescentados ao sêmen a ser preservado (HOLT, 2000; VIVEIROS; GODINHO, 2009). Segundo  
320 Purdy (2006), o diluente tem por finalidade fornecer energia, proteger de danos relacionados com  
321 a temperatura e sustentar um ambiente adequado para os espermatozoides resistirem  
322 provisoriamente. O diluidor BTS® (Beltsville Thawing Solution) é comumente utilizado no  
323 resfriamento de sêmen suíno (VIVEIROS; GODINHO, 2009), e tem obtido sucesso também na  
324 preservação de sêmen de peixes (MURGAS et al., 2007; PEREIRA et al., 2018).

325 Já que a composição bioquímica do esperma varia amplamente entre espécies, devido às  
326 variações na quantidade de lipídios e açúcares responsáveis pelo metabolismo das células  
327 espermáticas, para cada espécie é necessário o desenvolvimento de um protocolo de  
328 criopreservação diferenciado (CAROLSFELD et al., 2003; SHIN, et al., 1988). Portanto, a  
329 toxicidade dos diversos diluentes e crioprotetores são diferentes para cada espécie. Para se  
330 estabelecer um protocolo eficiente e prático para a criopreservação espermática, devem ser  
331 padronizados fatores principais como: tipo e concentração de crioprotetor, condições para  
332 congelamento e descongelamento do esperma, diluidores e tempo de cada processo. Neste  
333 processo de otimização, deve-se fazer a avaliação de motilidade do espermatozoide, visando a  
334 observação da qualidade do mesmo a cada etapa, antes do congelamento e pós-descongelamento  
335 (ALAVI; COSSON, 2005).

336 Neste sentido, Ávila-Portillo (2006) afirma que durante a criopreservação espermática, a  
337 integridade da membrana plasmática é o parâmetro mais afetado, uma vez que mudanças na  
338 temperatura deixam as membranas em altos níveis de estresse. Segundo Aurich (2005), a  
339 deformação na membrana celular pode levar a perda da motilidade durante o processo de  
340 congelamento e descongelamento, o que constitui um dos mais preocupantes danos causados pelo  
341 processo de criopreservação espermática. De fato, pequenas mudanças na estrutura do esperma  
342 podem ocasionar a redução da motilidade, capacidade de deslocamento e até de fecundação do

343 ovo (LEBOEUF; RESTALL; SALAMON, 2000). Vale ressaltar que para que se obtenha sucesso  
344 com a técnica de criopreservação espermática, uma alta viabilidade espermática funcional é  
345 fundamental (ANDRABI, 2009).

346 Assim, apesar da sua grande valorização no mercado de produção animal (CASTAÑO  
347 VILLADIEGO et al., 2017) e da sua incipiente utilização no âmbito da conservação (SEKI;  
348 YOSHIKAZI, 2018; SILVA; KUHNEN; SANCHES, 2018), o armazenamento de sêmen pelo  
349 processo de criopreservação pode apresentar problemas em alguns reprodutores, cujos  
350 espermatozoides sofrem determinadas crioinjúrias ao longo das etapas do processo (TASSERON;  
351 AMIR; SCHINDLER, 1977). Essas crioinjúrias são ocasionadas por interação entre as mudanças  
352 biofísicas, bioquímicas e ambientais ocorridas durante o processo de criopreservação espermática  
353 (FICKEL; WAGENER; LUDWIG, 2007), ou seja, essas células são expostas a estresses  
354 resultantes das mudanças de volume e consequentes alterações nas concentrações de íons e  
355 eletrólitos nas soluções intracelulares (STORNELLI; TITTARELLI; SAVIGNONE, 2005).

356 De acordo com Pesch e Bergmann (2006), as crioinjúrias podem ser classificadas de acordo  
357 com a ação direta dos cristais de gelo formados a partir do choque frio e da interação água/soluto  
358 na medida em que o gelo é produzido no meio. Neste mesmo sentido, Holt (2000) diz que uma  
359 taxa de refrigeração ótima deve ser lenta o bastante para prevenir a formação letal de cristais de  
360 gelo intracelular e rápida o suficiente para minimizar as injúrias do tempo de exposição a altas  
361 concentrações de sais, devido ao comprometimento da sobrevivência (CURRY et al., 1996) e  
362 fertilidade (ARRUDA et al., 2007). Por outro lado, como durante o processo de descongelamento  
363 ocorre a inversão das mudanças ocasionadas pelos processos de resfriamento e congelação, com o  
364 decréscimo na concentração intracelular de solutos e a restauração da concentração de água e do  
365 volume celular (HOLTZ, 1992), torna-se imprescindível que a técnica de descongelamento seja  
366 determinada a partir da técnica de congelamento, evitando uma grande discrepância entre os  
367 processos (PURDY, 2006). Segundo Ávila-Portillo (2006), deve-se ainda dedicar uma especial  
368 atenção ao tempo de cada processo para se evitar a recristalização do meio interno.

369 Todos os parâmetros e variáveis de um protocolo de criopreservação (tipo de substância,  
370 concentração, tempo de ação, etc.) devem, portanto, ser cuidadosamente avaliados durante a  
371 criação ou otimização de um protocolo de criopreservação. Além disso, para fins de  
372 implementação da técnica, avaliações dos padrões de distribuição da diversidade genética dentro  
373 da espécie alvo são importantes, tanto para a escolha da(s) população(ões) a ser(em)  
374 criopreservadas, quanto na escolha das populações potencialmente beneficiadas pela mesma.

375  
376

377 **OBJETIVOS**

378

379 **OBJETIVO GERAL**

380 - Realizar estudos técnicos que visem a definição e a proposição de estratégias de conservação  
381 para a espécie de peixe anual ameaçada de extinção *Austrolebias minuano*.

382

383 **OBJETIVOS ESPECÍFICOS**

384 - Avaliar os padrões de distribuição da diversidade genética da espécie, de modo a fornecer  
385 subsídios para a melhor aplicação do protocolo desenvolvido em futuros estudos;

386 - Elaborar um protocolo de criopreservação espermática para *A. minuano*.

387

388

389

390

391

392

393

394

395

396

397

398

399

400

401

402

403

404

405

406

407

408

409

410

411 **REFERÊNCIAS**

- 412
- 413 AGOSTINHO, A. A. Patterns of colonization in neotropical reservoirs, and prognoses on aging.  
414 **J.G. Tundisi**, p. 227–265, 1999.
- 415 ALAVI, S. M. H.; COSSON, J. Sperm motility in fishes: (I) effects of temperature and pH. **Cell**  
416 **Biol Int**, v. 29, p. 101–110, 2005.
- 417 ALVARENGA, M. A. et al. Amides as cryoprotectants for freezing stallion semen: A review.  
418 **Animal Reproduction Science**, v. 89, n. 1–4, p. 105–113, 2005.
- 419 ANDRABI, S. Factors affecting the quality of cryopreserved buffalo (*Bubalus bubalis*) bull  
420 spermatozoa. **Reproduction in Domestic Animals**, v. 44, n. 3, p. 552–569, 2009.
- 421 ARRUDA, R. P. et al. Biotécnicas aplicadas à avaliação do potencial de fertilidade do sêmen  
422 eqüino. **Revista Brasileira de Reprodução Animal**, v. 31, n. 17, p. 8–16, 2007.
- 423 AURICH, C. Factors affecting the plasma membrane function of cooled-stored stallion  
424 spermatozoa. **Animal Reproduction Science**, v. 89, n. 1–4, p. 65–75, 2005.
- 425 ÁVILA-PORTILLO, L. M. et al. Fundamentos de Criopreservación. **Revista Colombiana de**  
426 **Obstetricia y Ginecología**, v. 57, n. 4, p. 291–300, 2006.
- 427 BARON, J. S. et al. Meeting Ecological and Societal Needs for Freshwater. **Ecological**  
428 **Applications**, v. 22, n. 1, p. 1247–1260, 2002.
- 429 BEROIS, N.; GARCÍA, G.; DE SÁ, R. **Annual Fishes: Life History Strategy, Diversity, and**  
430 **Evolution**. New York: Taylor & Francis Group, 2015. v. 1
- 431 BRASIL; MINISTÉRIO DO MEIO AMBIENTE - MMA. **Conservação in situ, ex situ e on**  
432 **farm**. Disponível em: <[http://www.mma.gov.br/biodiversidade/conservacao-e-promocao-do-](http://www.mma.gov.br/biodiversidade/conservacao-e-promocao-do-uso-da-diversidade-genetica/agrobiodiversidade/conservacao-in-situ,-ex-situ-e-on-farm)  
433 [uso-da-diversidade-genetica/agrobiodiversidade/conservacao-in-situ,-ex-situ-e-on-farm](http://www.mma.gov.br/biodiversidade/conservacao-in-situ,-ex-situ-e-on-farm)>. Acesso  
434 em: 21 nov. 2018.
- 435 BRAY, D. J. **Fishes of Australia**. Disponível em:  
436 <<http://fishesofaustralia.net.au/home/order/15>>. Acesso em: 20 ago. 2010.
- 437 CABRITA, E. et al. Cryopreservation of fish sperm: Applications and perspectives. **Journal of**



- 438 **Applied Ichthyology**, v. 26, n. 5, p. 623–635, 2010.
- 439 CAROLSFELD, J. et al. Cryopreservation of sperm in Brazilian migratory fish conservation.  
440 **Journal of Fish Biology**, v. 63, n. 2, p. 472–489, 2003.
- 441 CASTAÑO VILLADIEGO, F. A. et al. Sêmen sexado através de citometria de fluxo e  
442 centrifugação por gradiente de concentração. **Revista de Medicina Veterinária**, n. 36, p. 121–  
443 133, 2017.
- 444 CHAKRABORTY, N. et al. Cryopreservation of spin-dried mammalian cells. **PLoS ONE**, v. 6,  
445 n. 9, 2011.
- 446 COSTA, W.J.E.M. & CHEFFE, M. M. Three new annual fishes of the genus *Austrolebias* from  
447 the laguna dos Patos system, southern Brazil, and a redescription of *A. adloffii* (Ahl)  
448 (Cyprinodontiformes: Rivulidae). **Comunicações do Museu de Ciências e Tecnologia da**  
449 **PUCRS, Série Zoologia**, p. 179–200, 2001.
- 450 COSTA, W.J.E.M. & CHEFFE, M. M. *Austrolebias univentripinnis* sp. nov. (Teleostei:  
451 Cyprinodontiformes: Rivulidae): a new annual killifish from the Mirim Lagoon basin, southern  
452 Brazil. **Zootaxa**, v. 1052, p. 41–48, 2005.
- 453 COSTA, W. J. E. M. Phylogeny and classification of Rivulidae revisited: origin and evolution of  
454 annualism and miniaturization in rivulid fishes (Cyprinodontiformes: Aplocheiloidei). **Journal**  
455 **of Comparative Biology**, v. 3, n. 1, p. 33–92, 1998.
- 456 COSTA, W. J. E. M. et al. Monophyly and Phylogenetic Relationships of the Neotropical  
457 Annual Fish Genera Monophyly and Phylogenetic Relationships of the Neotropical Annual Fish  
458 Genera *Austrolebias* and *Megalebias* ( Cyprinodontiformes : Rivulidae ). **Copeia**, n. 4, p. 916–  
459 927, 2002.
- 460 COSTA, W. J. E. M. The South American annual killifish genus *Austrolebias* (Teleostei:  
461 Cyprinodontiformes: Rivulidae): phylogenetic relationships, descriptive, morphology and  
462 taxonomic revision. **Zootaxa**, v. 1213, p. 1–162, 2006.
- 463 COSTA, W. J. E. M. **Catalog of Aplocheiloidkilli fishes of the world**. Rio de Janeiro:  
464 Laboratório de Ictiologia Geral e Aplicada, Departamento de Zoologia, Universidade Federal do  
465 Rio de Janeiro, 2008.

466 COSTA, W. J. E. M.; CHEFFE, M. M.; AMORIM, P. F. Two new seasonal killifishes of the  
467 *Austrolebias adloffii* group from the Lagoa dos Patos basin, southern Brazil (Cyprinodontiformes:  
468 Aplocheilidae). **Vertebrate Zoology**, v. 67, n. 2, p. 139–149, 2017.

469 CURRY, M. R. et al. Surface area and volume measurements for ram and human spermatozoa.  
470 **Biology of reproduction**, v. 55, p. 1325–1332, 1996.

471 DAY, J. G.; WALKER, J. M. **Cryopreservation and Freeze-Drying Protocols**. 2. ed. New  
472 Jersey: Humana Press, 2007. v. 368

473 DUDGEON, D. et al. Freshwater biodiversity: Importance, threats, status and conservation  
474 challenges. **Biological Reviews of the Cambridge Philosophical Society**, v. 81, n. 2, p. 163–  
475 182, 2006.

476 ERREA, A.; DANULAT, E. Growth of the annual fish, *Cynolebias viarius*  
477 (Cyprinodontiformes), in the natural habitat compared to laboratory conditions. **Environmental**  
478 **Biology of Fishes**, v. 61, n. 3, p. 261–268, 2001.

479 FAUSTINO, L. R. et al. Goat and sheep ovarian tissue cryopreservation: Effects on the  
480 morphology and development of primordial follicles and density of stromal cell. **Animal**  
481 **Reproduction Science**, v. 122, n. 1–2, p. 90–97, 2010.

482 FERREIRA, Y. M.; MONTENEGRO, A. R.; SALMITO-VANDERLEY, C. S. B. Efeito de  
483 vitaminas e aminoácidos como suplementação da solução crioprotetora para a criopreservação do  
484 sêmen de tambaqui (*Colossoma macropomum*). **Acta Scientiae Veterinariae**, v. 55, n.  
485 September, p. 1–8, 2018.

486 FERRER, J.; MALABARBA, L. R.; COSTA, W. J. E. M. *Austrolebias paucisquama*  
487 (Cyprinodontiformes: Rivulidae), a new species of annual killifish from southern Brazil.  
488 **Neotropical Ichthyology**, v. 6, n. 2, p. 175–180, 2008.

489 FICKEL, J.; WAGENER, A.; LUDWIG, A. Semen cryopreservation and the conservation of  
490 endangered species. **European Journal of Wildlife Research**, v. 53, n. 2, p. 81–89, 2007.

491 FIGUEROA, E.; VALDEBENITO, I.; FARIAS, J. G. Technologies used in the study of sperm  
492 function in cryopreserved fish spermatozoa. **Aquaculture Research**, v. 47, n. 6, p. 1691–1705,  
493 2016.

494 FONTANA, C. S. . B. G. A. . R. R. E. **Livro vermelho da fauna ameaçada de extinção no Rio**  
495 **Grande do Sul**. Porto Alegre: Edipucrs, 2003.

496 FRANKHAM, R.; BALLOU, J. D.; BRISCOE, D. A. **A primer of conservation genetics**.  
497 Cambridge: Cambridge University Press, 2004.

498 FURNESS, A. I. The evolution of an annual life cycle in killifish: adaptation to ephemeral  
499 aquatic environments through embryonic diapause. **Biological reviews of the Cambridge**  
500 **Philosophical Society**, v. 91, n. 3, p. 796–812, 2016.

501 GARCEZ, D. K. et al. Phylogeography of the critically endangered neotropical annual fish,  
502 *Austrolebias wolterstorffi* (Cyprinodontiformes: Aplocheilidae): genetic and morphometric  
503 evidence of a new species complex. **Environmental Biology of Fishes**, 2018.

504 GARCÍA, G. Multiple simultaneous speciation in killifishes of the *Cynolebias adloffii* species  
505 complex (Cyprinodontiformes, Rivulidae) from phylogeography and chromosome data. **Journal**  
506 **of Zoological Systematics and Evolutionary Research**, v. 44, n. 1, p. 75–87, 2006.

507 HAGEDORN, M.; CARTER, V. L. Zebrafish reproduction: Revisiting in vitro fertilization to  
508 increase sperm cryopreservation success. **PLoS ONE**, v. 6, n. 6, p. 1–9, 2011.

509 HAMMERSTEDT, R. O. Y. H.; GRAHAM, J. K.; CAROLINA, S. Cryopreservation of Poultry  
510 Sperm: The Enigma of Glycerol. **Cryobiology**, v. 38, p. 26–38, 1992.

511 HOLT, W. V. Fundamental aspects of sperm cryobiology: The importance of species and  
512 individual differences. **Theriogenology**, v. 53, n. 1, p. 47–58, 2000.

513 HOLTZ, W. The effect of zwitterion buffers on the freezability of boer goat semen.  
514 **Theriogenology**, p. 947–951, 1992.

515 HOROKHOVATSKYI, Y. et al. Cryopreservation effects on a viable sperm sterlet (*Acipenser*  
516 *ruthenus*) subpopulation obtained by a Percoll density gradient method. **PLoS ONE**, v. 13, n. 8,  
517 p. 1–23, 2018.

518 ICMBIO. **Plano de Ação Nacional para a Conservação dos Peixes Rivulídeos Ameaçados de**  
519 **Extinção**. Disponível em: <<http://www.icmbio.gov.br/portal/faunabrasileira/plano-de-acao-nacional-lista/2833-plano-de-acao-nacional-para-a-conservacao-dos-rivulideos>>. Acesso em: 20  
520 ago. 2018a.  
521

522 ICMBIO. **Sumário executivo do plano de ação nacional para a conservação dos peixes**  
523 **Rivulídeos ameaçados de extinção**. Disponível em:  
524 <[http://www.icmbio.gov.br/portal/biodiversidade/fauna-brasileira/plano-de-acao/2833-plano-de-](http://www.icmbio.gov.br/portal/biodiversidade/fauna-brasileira/plano-de-acao/2833-plano-de-acao-nacional-para-a-conservacao-dos-rivulideos.html)  
525 [acao-nacional-para-a-conservacao-dos-rivulideos.html](http://www.icmbio.gov.br/portal/biodiversidade/fauna-brasileira/plano-de-acao/2833-plano-de-acao-nacional-para-a-conservacao-dos-rivulideos.html)>. Acesso em: 20 ago. 2012b.

526 JUNK, W. J. et al. Brazilian wetlands: Their definition, delineation, and classification for  
527 research, sustainable management, and protection. **Aquatic Conservation: Marine and**  
528 **Freshwater Ecosystems**, v. 24, n. 1, p. 5–22, 2014.

529 KODERLE, M.; AURICH, C.; SCHÄFER-SOMI, S. The influence of cryopreservation and  
530 seminal plasma on the chromatin structure of dog spermatozoa. **Theriogenology**, v. 72, n. 9, p.  
531 1215–1220, 2009.

532 LABBE, C.; CROWE, L. M.; CROWE, J. H. Stability of the Lipid Component of Trout Sperm  
533 Plasma Membrane during Freeze-Thawing. **Cryobiology**, v. 34, n. 2, p. 176–182, 1997.

534 LANÉS, L. E. K. . L. M. Discovery of the Critically Endangered annual killifish *Austrolebias*  
535 *wolterstorffi* (Ahl, 1924) (Cyprinodontiformes: Rivulidae) in Lagoa do Peixe National Park, Rio  
536 Grande do Sul, southern Brazil. **Journal of Threatened Taxa**, v. 2, n. 11, p. 1282–1285, 2010.

537 LEBOEUF, B.; RESTALL, B.; SALAMON, S. Production and storage of goat semen for  
538 artificial insemination. **Animal Reproduction Science**, v. 62, n. 1–3, p. 113–141, 2000.

539 LIU, R. K.; WALFORD, R. L. Observations on the lifespans of several species of annual fishes  
540 and of the world’s smallest fishes. **Experimental Gerontology**, v. 5, n. 3, p. 241–246, 1970.

541 LOUREIRO, M.; DE SÁ, R. O. Diversity of Aplocheiloidei. In: CRC PRESS TAYLOR &  
542 FRANCIS GROUP (Ed.). . **Annual Fishes: Life History Strategy, Diversity, and Evolution**.  
543 [s.l: s.n.]. p. 1–342.

544 MACGREGOR, W. S. The Chemical and physical properties of DMSO. **Annals New York**  
545 **Academy of Sciences**, v. 23, n. 3, p. 770–774, 1967.

546 MACHADO, W. M. et al. Óleo De Peixe Associado Ao Ácido Ascórbico No Diluidor Para  
547 Criopreservação De Sêmen Caprino. **Arquivo Brasileiro de Medicina Veterinária e**  
548 **Zootecnia**, v. 70, n. 1, p. 131–138, 2018.

549 MALMQVIST, B.; RUNDLE, S. Threats to the running water ecosystems of the world.

- 550 **Environmental Conservation** 29, v. 29, n. 2, p. 134–153, 2002.
- 551 MALTCHIK et al. Wetlands of Rio Grande do Sul, Brazil: a classification with emphasis on  
552 plant communities. **Acta Limnol. Bras**, v. 16, n. 2, p. 137–151, 2004.
- 553 MARIA, A. N. et al. Extenders and cryoprotectants for cooling and freezing of piracanjuba  
554 (*Brycon orbignyianus*) semen, an endangered Brazilian teleost fish. **Aquaculture**, v. 260, n. 1–4,  
555 p. 298–306, 2006.
- 556 MARTÍNEZ-PÁRAMO, S. et al. Cryobanking as tool for conservation of biodiversity: Effect of  
557 brown trout sperm cryopreservation on the male genetic potential. **Theriogenology**, v. 71, n. 4,  
558 p. 594–604, 2009.
- 559 MERYMAN. Cryoprotective agents. **Cryobiology**, n. 8, p. 173–183, 1971.
- 560 MIRZOYAN, A. V. et al. Preliminary results on ascorbic acid and lysine suppression of  
561 clastogenic effect of deep-frozen sperm of the Russian sturgeon (*Acipenser gueldenstaedti*).  
562 **International Journal of Refrigeration**, v. 29, n. 3, p. 374–378, 2006.
- 563 MITSCH, W. J.; GOSSELINK, J. G. The value of wetlands: importance of scale and landscape  
564 setting. **Ecological Economics**, v. 35, n. 200, p. 25–33, 2000.
- 565 MURGAS, L. D. S. et al. Criopreservação do sêmen de curimba (*Prochilodus lineatus*) mediante  
566 adição de diferentes diluidores, ativadores e crioprotetores. **Revista Brasileira de Zootecnia**, v.  
567 36, n. 3, p. 526–531, 2007.
- 568 MURPHY, W. J.; COLLIER, G. E. A molecular phylogeny for aplocheiloid fishes  
569 (Atherinomorpha, Cyprinodontiformes): The role of vicariance and the origins of annualism.  
570 **Molecular Biology and Evolution**, v. 14, n. 8, p. 790–799, 1997.
- 571 NASCIMENTO, A. F. et al. Out-of-season sperm cryopreserved in different media of the  
572 Amazonian freshwater fish pirapitinga (*Piaractus brachypomus*). **Animal Reproduction  
573 Science**, v. 118, n. 2–4, p. 324–329, 2010.
- 574 NIELSEN, D. T. B.; PILLET, D. *Austrolebias accorsii*, a new annual fish (Cyprinodontiformes:  
575 Rivulidae: Cynolebiatinae) from the upper río Grande basin, Amazon basin, Bolivia.  
576 **International Journal of Ichthyology**, v. 21, n. 4, p. 172–179, 2015.

577 PEREIRA, J. R. et al. Dimethylsulfoxide, methanol and methylglycol in the seminal  
578 cryopreservation of Suruvi, *Steindachneridion scriptum*. **Animal Reproduction Science**, 2018.

579 PESCH, S.; BERGMANN, M. Structure of mammalian spermatozoa in respect to viability,  
580 fertility and cryopreservation. **Micron**, v. 37, n. 7, p. 597–612, 2006.

581 PURDY, P. H. A review on goat sperm cryopreservation. **Small Ruminant Research**, v. 63, n.  
582 3, p. 215–225, 2006.

583 REICHARD, M.; POLAČIK, M.; SEDLÁČEK, O. Distribution, colour polymorphism and  
584 habitat use of the African killifish *Nothobranchius furzeri*, the vertebrate with the shortest life  
585 span. **Journal of Fish Biology**, v. 74, n. 1, p. 198–212, 2009.

586 ROSA, R. S.; LIMA, F. C. T. **Peixes**. Brasília: Ministério do Meio Ambiente, 2008.

587 SÁNCHEZ, L. A. et al. Nothobranchius as a model for aging studies. A review. **Aging and**  
588 **Disease**, v. 5, n. 4, p. 281–291, 2014.

589 SEKI, S.; YOSHIKAWA, G. Conservation of the medaka bio-resources by cryopreservation of  
590 germ cells. **Cryobiology**, v. 80, n. 2018, p. 168, 2018.

591 SEMA. **Secretaria Estadual de Meio Ambiente. Reavaliação da Lista das Espécies da**  
592 **Fauna Silvestre Ameaçadas de Extinção no Rio Grande do Sul**. Disponível em:  
593 <[http://www.al.rs.gov.br/filerepository/repLegis/arquivos/DEC 51.797.pdf](http://www.al.rs.gov.br/filerepository/repLegis/arquivos/DEC%2051.797.pdf)>. Acesso em: 16 nov.  
594 2018.

595 SHIN, S. J. et al. A new antibiotic combination for frozen bovine semen. **Theriogenology**, v. 29,  
596 n. 3, p. 577–591, 1988.

597 SILVA, F. C.; KUHNEN, V. V.; SANCHES, E. G. Refrigeração do sêmen da garoupa-verdadeira  
598 *Epinephelus marginatus*. **Arq. Bras. Med. Vet. Zootec**, v. 70, n. 5, p. 1557–1564, 2018.

599 SILVA, F. S. DIAS; DEUS, J. R. M.; HILSDORF, A. W. S. The upper reached ichthyofauna of  
600 the Tietê River, São Paulo, Brazil: Aspects of their diversity and conservation. **Biodiversity and**  
601 **Conservation**, v. 15, n. 11, p. 3569–3577, 2006.

602 SOJKA, E. J.; HOPE, W.; PEARSON, D. Dimethyl sulfoxide update: new applications and  
603 dosing methods. **Proceed. Am. Assoc. Equine Practit**, v. 36, p. 683–690, 1990.

604 STORNELLI, M. C.; TITTARELLI, C. M.; SAVIGNONE, C. A. Criopreservation Effect on  
605 Fertility. **Analecta Veterinaria**, v. 25, n. 2, p. 28–35, 2005.

606 SUQUET, M. et al. Cryopreservation of sperm in marine fish. **Aquaculture Research**, v. 31, n.  
607 3, p. 231–243, 2000.

608 TASSERON, F.; AMIR, D.; SCHINDLER, H. Acrosome damage of ram spermatozoa during  
609 dilution, cooling and freezing. **Journal of reproduction and fertility**, v. 51, n. 2, p. 461–462,  
610 1977.

611 THIRUMALA, S. et al. Freezing response and optimal cooling rates for cryopreserving sperm  
612 cells of striped bass, *Morone saxatilis*. **Theriogenology**, v. 66, n. 4, p. 964–973, 2006.

613 VARELA JUNIOR, A. S. et al. Effect of low density lipoprotein on the quality of cryopreserved  
614 dog semen. **Animal Reproduction Science**, v. 115, n. 1–4, p. 323–327, 2009.

615 VARELA JUNIOR, A. S. et al. Efeito do crioprotetor de diferentes concentrações do  
616 Dimetilsulfóxido no congelamento de sêmen de Tambaqui (*Colossoma macropomum*).  
617 **Atlântica**, v. 34, n. 2, p. 129–137, 2012.

618 VAZ-FERREIRA, R.; SIERRA, B.; SCAGLIA, S. Eco-etología de la reproducción en los peces  
619 del género *cynolebias steindachner*, 1876. **Apartados de los Archivos de la Sociedad de**  
620 **Biología de Montevideo**, v. 26, p. 44–49, 1964.

621 VAZ-FERREIRA, R.; SORIANO, B. S.; SEÑORANS, J. S. Integracion de la fauna de  
622 vertebrados en algunas masas de agua dulce temporales del Uruguay. **Compendios de Trabajo**  
623 **del Departamento de Zoología Vertebrados**, v. 25, p. 1–16, 1966.

624 VIEIRA CASTRO, S. et al. Agentes crioprotetores intracelulares: características e utilização na  
625 criopreservação de tecido ovariano e oócitos de tecido ovariano e oócitos. **Acta Scientiae**  
626 **Veterinariae**, v. 39, 2011.

627 VIVEIROS, A. T. M.; GODINHO, H. P. Sperm quality and cryopreservation of Brazilian  
628 freshwater fish species: a review. **Fish Physiology and Biochemistry**, v. 35, n. 1, p. 137–150,  
629 2009.

630 VOLCAN, M. V. **Crescimento e fecundidade do Peixe Anual *Austrolebias nigrofasciatus***  
631 **(Cyprinodontiformes: Rivulidae) sob condições de laboratório**. [s.l.] FURG, 2009.

632 VOLCAN, M. V. et al. First record of annual killifish *Austrolebias melanoorus* (Amato, 1986)  
633 (Cyprinodontiformes: Rivulidae) from Brazil, with data on habitat and conservation. **Journal of**  
634 **Applied Ichthyology**, v. 27, n. 4, p. 1120–1122, 2011.

635 VOLCAN, M. V. et al. Annual fishes (Rivulidae) from Southern Brazil: A broad-scale  
636 assessment of their diversity and conservation. In: GROUP, C. P. T. & F. (Ed.). . **Annual**  
637 **Fishes: Life History Strategy, Diversity, and Evolution**. 1. ed. [s.l: s.n.]. p. 1–342.

638 VOLCAN, M. V.; FONSECA, A. P.; ROBALDO, R. B. Reproduction of the threatened Annual  
639 Killifish *Austrolebias nigrofasciatus* (Cyprinodontiformes: Rivulidae), confined in a natural  
640 environment. **Journal of Threatened Taxa**, v. 3, n. 6, p. 1864–1867, 2011.

641 WALFORD, R. L.; LIU, R. K. Husbandry, life span, and growth rate of the annual fish,  
642 *Cynolebias adloffii* E. Ahl. **Experimental Gerontology**, v. 1, n. 2, p. 161–168, 1965.

643 WOURMS, J. P. Duration in the Eggs of Annual Fishes. **J. Exp. Zool.**, v. 182, p. 389–414,  
644 1972.

645 ZILLI, L. et al. Comparative proteome analysis of cryopreserved flagella and head plasma  
646 membrane proteins from sea bream spermatozoa: Effect of antifreeze proteins. **PLoS ONE**, v. 9,  
647 n. 6, p. 1–10, 2014.

648

649

650

651

652

653

654

655

656

657

658

659

660



661  
662  
663  
664  
665  
666  
667  
668  
669  
670  
671  
672  
673  
674  
675  
676  
677  
678  
679  
680  
681  
682  
683  
684  
685  
686  
687  
688  
689  
690  
691

## CAPÍTULO 1

Artigo a ser submetido na revista “Reviews in Fish Biology and Fisheries”

692 Murilo de Oliveira Fernandes (<https://orcid.org/0000-0003-2030-4119>), Daiana Kaster Garcez  
693 (<https://orcid.org/0000-0003-4526-9647>), Antonio Sergio Varela Junior (<https://orcid.org/0000-0003-4901-5118>),  
694 Lizandra Jaqueline Robe (<https://orcid.org/0000-0001-8506-9143>)

695

696 **Phylogeography of the endangered neotropical annual fish, *Austrolebias minuano***  
697 **(Cyprinodontiformes: Rivulidae)**

698 M. O. Fernandes

699 D. K. Garcez

700 A. S. Varela Junior

701 Programa de Pós-Graduação em Biologia de Ambientes Aquáticos Continentais

702 (PPGBAC), Universidade Federal do Rio Grande (FURG), Rio Grande 96203-000, Rio Grande do

703 Sul, Brazil.

704

705 L. J. Robe\*

706 Departamento de Ecologia e Evolução (DEE), Centro de Ciências Naturais e Exatas (CCNE),

707 Universidade Federal de Santa Maria – UFSM, Santa Maria, Brazil.

708

709 \* Corresponding author

710 Email: [lizbiogen@gmail.com](mailto:lizbiogen@gmail.com) (LJR)

711 Phone: +55 (53) 98419-5271

712

713 **Acknowledgements**

714 We would like to thank the Fundação Grupo Boticário de Proteção à Natureza for funding this study

715 (Project number 1090\_20171). We also thank the Coordenação de Aperfeiçoamento de Pessoal de

716 Nível Superior - Brasil (CAPES) - Finance Code 001 for providing fellowships to MOF and DKG.

717 **Abstract**

718 A portion of the ichthyofauna threatened in Brazil is composed of species that live in seasonal  
719 aquatic environments. Among them, the annual fish *Austrolebias minuano* lives in small ponds,  
720 encompassing unique and isolated populations that are endangered. Therefore, the objective of this  
721 study is estimating the levels of diversity and genetic structure within and between populations of  
722 *A. minuano*, seeking the reconstruction of its evolutionary history and establishing conservation  
723 strategies. Characterization of mitochondrial *cyt b*, CO1 and nuclear *ENC1* genes sequences  
724 showed division of four lineages, which may constitute at least three different species: the already  
725 described *A. pongondo*, *A. minuano* sensu stricto and one new species that embraces two  
726 population groups inhabiting the eastern margin of the Patos Lagoon. The genetic distances  
727 between *A. pongondo* and *A. minuano* were as high as the distances between the eastern and  
728 western lineages of *A. minuano* sensu lato. All comparisons detected a significant genetic structure  
729 between these groups, which high levels of genetic differentiation and revealed reciprocally  
730 monophyletic. In the chronophylogenetic reconstructions, the species of western margin of the  
731 lagoon constituted the first to branch out while whereas the two lineages of the eastern margin  
732 diverged more recently. The divergence timings revealed that divergences occurred before the  
733 occurrence of the first Pleistocene Lagoon Barrier Depositional System related to the  
734 paleogeographic evolution of the South American Coastal Plain. Further studies, including  
735 morphological and genetic studies that included other species of the *A. adloffii* species group are  
736 imperative in order to refine this scenario.

737

738 **Keywords**

739 Annualism – Biodiversity – Killifish – Molecular phylogeny

740

741

742 **Introduction**

743 Among neotropical annual killifish, *Austrolebias* comprises 50 valid species (Alonso et al. 2018;  
744 Serra and Loureiro 2018) that inhabit seasonal ponds at the Southern portion of the Neotropics.  
745 Most of these species occur in association with two river basins, the Paraná-La Plata basin and the  
746 Patos-Mirim drainage system, with only one species registered on the Amazon basin (Costa 2006;  
747 Alonso et al. 2018). Since these species are extremely adapted and dependent on the physical  
748 integrity of their biotope, they become important evolutionary models of bioecological studies,  
749 related to phenotypic plasticity, physiological tolerance and adaptive capacity (Furness 2016).  
750 Moreover, populations of annual fish are usually small, isolated and restricted, these species  
751 become ideal models for studies in genetics and evolutionary biology (Berois et al. 2015).

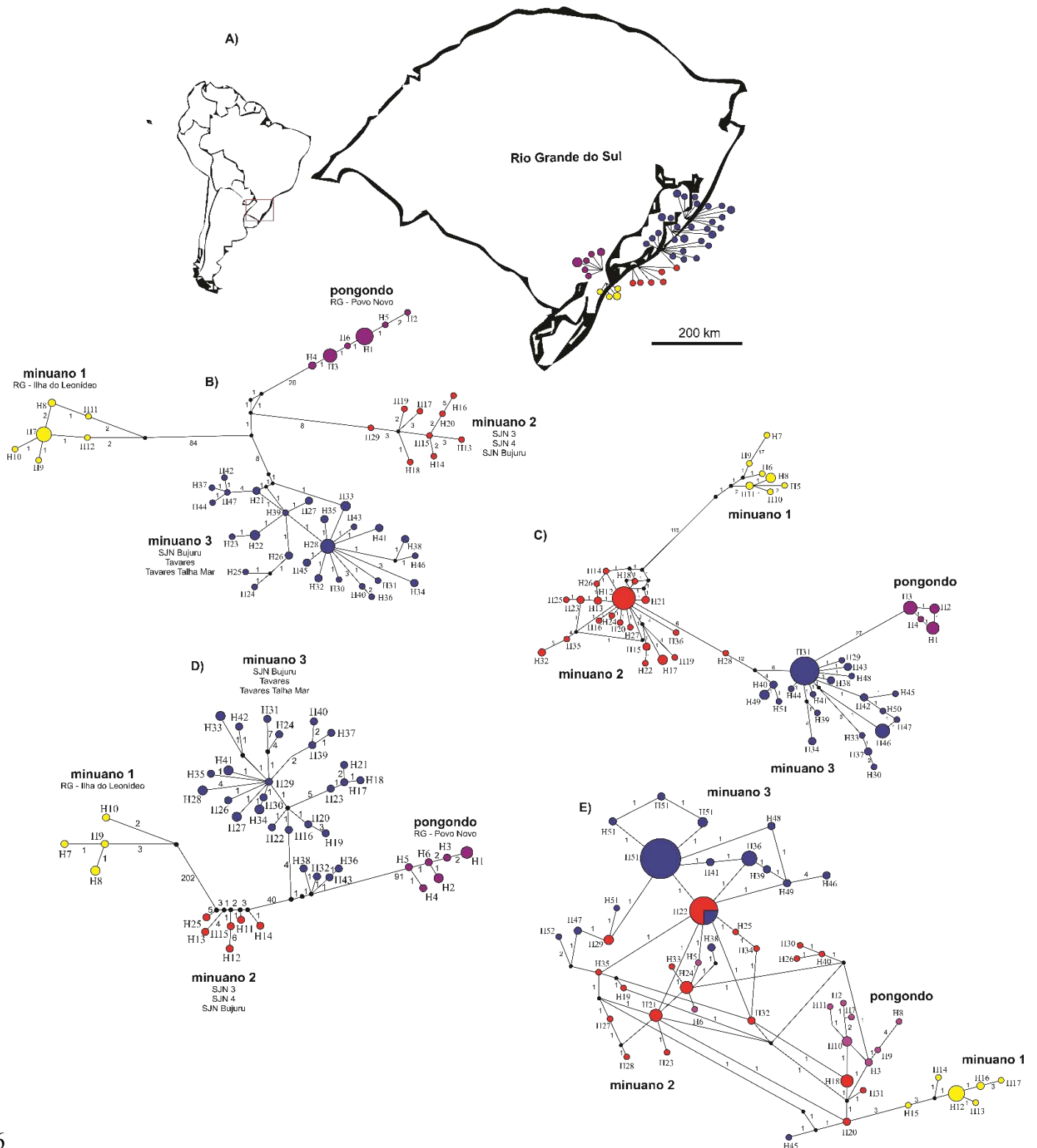
752 The highly specialized life cycle of these fish, which present an extreme dependence on  
753 seasonal ponds and annual and non-overlapping generations times impose serious flaws to gene  
754 flow among populations, leading to an increase on the levels of inbreeding and genetic structuring.  
755 These mechanisms also tend to reduce genetic diversity, which may decrease the species'  
756 reproductive capacity and limit its ability to adapt (Beheregaray et al. 2016). At the same time,  
757 these mechanisms increase the divergence between populations, which may lead to morphological  
758 dissimilarity and result in events of allopatric speciation (de Sá et al. 2015). All these properties  
759 make this an extremely specious and diversified evolutionary lineage (Sedláček et al. 2014).  
760 Nevertheless, these same properties in combination with the limited distribution and the straight  
761 forward destruction of humid areas make these species especially vulnerable to extinction (Fontana  
762 2003; Rosa and Lima 2008).

763 *Austrolebias minuano* (Costa and Cheffe 2001) is endemic to the Coastal Plain of Rio  
764 Grande do Sul, occurring in temporary wetlands of the Patos-Mirim Lagoon System. This species  
765 is included on the *A. adloffii* species group, which encompasses 11 species (Volcan et al. 2014;  
766 Costa et al. 2017) that are remarkable for their great sexual dimorphism (Costa 2006). However,

767 *A. minuano* differs from other species of the group, and even from most species of *Austrolebias*,  
768 except *Austrolebias wolterstorffi*, since it is found on both margins of the Patos Lagoon (Figure  
769 1A). The fact that this Lagoon usually encompasses a barrier to the dispersion of other killifish  
770 (Garcez et al. 2018) and the endangered (EN) status occupied by *A. minuano* in local red lists of  
771 threatened species (SEMA 2014) highlights the importance of addressing the potential of cryptic  
772 diversity within this lineage. In fact, recently, a local population of *A. minuano* occurring on the  
773 west margin of the Patos Lagoon was described as a new species (Figure 1A), named *A. pongondo*,  
774 through molecular and morphological evidence (Costa et al. 2017).

775         The use of molecular procedures for studying the levels of diversity and structure between  
776 populations of annual fish has already revealed an effective strategy in obtaining information for  
777 the conservation of such species (Garcez et al. 2018). By estimating the population structure, for  
778 example, a better targeting of conservation efforts can be made, aiming at a more effective use of  
779 available resources (Beheregaray et al. 2016). In addition, assessing the levels of genetic diversity  
780 presented by different populations can also provide significant estimates about the degree of  
781 disturbance of their biotope (Matioli and Fernandes 2012). So, the aim of this study is to evaluate  
782 the levels of genetic diversity and structure within and among populations of *A. minuano*, seeking  
783 to assist in the reconstruction of its evolutionary history and in the establishment of management  
784 and conservation strategies for the target species.

785



786

787 **Figure 1.** (a) Collection points and areas of occurrence recorded for *A. minuano* sensu lato (yellow) and *A. pongondo*  
 788 (purple). (b) Median-joining networks of the 47 cytb haplotypes, (c) 51 CO1 haplotypes, (d) 43 CO1 and Cyt b  
 789 concatenated haplotypes, and (e) 52 ENC1 alleles. The size of each circle is proportional to haplotype frequencies, and  
 790 colors refer to the main population groups recovered in this study (see Results).

791 **Material and methods**

792 **Ethics statement**

793 Methods used in this study were approved by the Ethics Committee for Animal Use of Federal  
794 University of Rio Grande (CEUA-FURG, permission number: 23116.008163/2015-23).  
795 Euthanasia methods followed the Federal Council of Veterinary Medicine (Resolution nº 05/2012  
796 1000).

797

798 **Study area**

799 Individuals of *A. minuano* and *A. pongondo* were collected between 2015 and 2017 in six and one  
800 sampling locations, respectively, distributed in the Patos-Mirim lagoon system, in the  
801 southernmost Brazilian state of Rio Grande do Sul. This area encompasses all the sampling  
802 locations known for both species. All the sampled sites are within Quaternary sedimentary deposits  
803 of the coastal plain. This region was reworked during the paleoclimatic alterations of Quaternary,  
804 which caused variations in sea level, thereby opening and closing areas of communication with  
805 the Atlantic Ocean, and building a system referred to as the Multiple Barrier (Villwock and  
806 Tomazelli 2007).

807

808 **Samplings**

809 For this study, a total of 140 fishes were collected in temporary ponds, with the help of hand nets,  
810 after the reproductive season of 2015, 2016 and 2017, at the months of August and September.  
811 Fishes were euthanized with an overdose of 3,000 mg/L of eugenol anesthetic and fixed just after  
812 this procedure in 95% ethanol.

813

814 **DNA sequences**

815 Approximately 30 mg of muscular tissue dissected from the caudal peduncle was used to extract  
816 the total DNA, using a pre-established protocol (Sambrook J 1989). The obtained DNA was used  
817 in the amplification of approximately 770 bp of the mitochondrial cytochrome *b* (*cyt b*) gene,  
818 1140 bp of the mitochondrial cytochrome c oxidase subunit 1 (CO1) and 620 bp of the nuclear  
819 ectoderm-neural cortex protein 1 (ENC1), using the primers L14735 (5'  
820 AAAAACCACCGTTGTTATTCAACTA 3') and CB3-H (5' GGCAAATAGGAARTATCATTC  
821 3') (Wolf 1999; Palumbi et al. 2002), LCO1490 (5' GGTC AACAAATCATAAAGATATTGG 3')  
822 and COX1R (5' GG YTCTTCRAARGTGTGATAS 3') (Costa and Amorim 2011), and F85 (5'  
823 GACATGCTGGAGTTTCAGGA 3') and R982 (5' ACTTGTTTRGCMACTGGGTCAAA 3') (Li  
824 et al. 2007), respectively.

825 Polymerase chain reactions (PCR) were performed using 100 ng of DNA in 25  $\mu$ L  
826 reactions, containing 1 $\times$  buffer, 0.5–1  $\mu$ M of each primer, 0.25 mM of each dNTP, 2.5–3 mM of  
827 MgCl<sub>2</sub> and 1–1.5 U of Taq DNA polymerase. For the mitochondrial gene *cyt b*, thermocycling  
828 profile consisted of a first denaturing step of 5 min at 94 °C; 35 cycles of 45 s at 94 °C, 45 s at 55  
829 °C and 1 min at 72 °C; and a final extension step of 10 min at 72 °C. For the mitochondrial gene  
830 CO1 and the nuclear gene ENC1, the cycling conditions encompassed 50 s at 94 °C, 50 s at 54 °C  
831 and 1 min at 72 °C; and 30 s at 94 °C, 30 s at 53 °C and 30 s at 72 °C, respectively.

832 After confirming the success of the amplification, amplicons were purified with a solution  
833 of 7.5 M ammonium acetate (C<sub>2</sub>H<sub>7</sub>NO<sub>2</sub>) and sent to be sequenced. Sequencing was performed in  
834 a Perkin-Elmer ABI Prism 377 Automated Sequencer (MACROGEN, Seoul, Korea) using the  
835 primers described above.

836

### 837 **Data analysis**

838 Software Gap-4 (Staden 1996) was used to edit and assemble the electropherograms. The  
839 consensus sequences thus obtained were aligned using ClustalW, as implemented in Mega 6



840 software (Tamura et al. 2013). Each individual polymorphic site encountered along this alignment  
841 was checked and manually altered, if required. The heterozygous positions of ENC1 were further  
842 unphased using DNAsp 5.10 (Librado and Rozas 2009).

843 First of all, relationships between haplotypes or alleles were inferred individually for each  
844 gene through networks generated by median-joining in Network v4.510 (Bandelt et al. 1999).  
845 Phylogenetic reconstructions were further performed for each gene through Bayesian Analysis  
846 (BA), as performed by MrBayes 3.2.6 (Ronquist et al. 2012). This analysis was performed through  
847 two runs of 10,000,000 generations of MCMC, sampling every 1000, according to the model  
848 selected by an AIC test (Akaike 1974) implemented in jModelTest (Darriba et al. 2012).

849 Levels of genetic diversity within populations or population clusters were then estimated  
850 using DnaSP 5.10, through the following parameters: average number of different haplotypes (H)  
851 or alleles (A), average number of nucleotide differences between haplotypes or alleles (k),  
852 haplotype diversity (Hd) or expected heterozygosity (He), and nucleotide ( $\pi$ ) diversities. The  
853 neutrality tests Tajima's D (Tajima 1989) and Fu's FS (Fu 1997) were performed in the same  
854 software for each of the three genes, individually and in combination.

855 The level of genetic differentiation among populations or population clusters were  
856 measured by the fixation index (FST) in Arlequin 3.5 using pairwise differences, with 10,000  
857 random permutations. A Mantel test was performed using these measures to check the correlation  
858 between genetic (FST) and geographic distances. Different hypothesis of population grouping  
859 were further addressed through spatial analysis of molecular variance (SAMOVA) (Dupanloup et  
860 al. 2002), which relies on hierarchical analysis of molecular variance (AMOVA), as performed in  
861 Arlequin, and through a Bayesian Population Structure analysis, as performed in BAPS 6  
862 (Corander et al. 2008).

863 Finally, a chronophylogenetic tree was reconstructed under a BA in Beast 1.5.4  
864 (Drummond and Rambaut 2007), using unlinked nucleotide substitution models, unlinked

865 uncorrelated lognormal relaxed molecular clock models and a linked coalescent constant  
866 population size tree. In this case, a normal prior distribution with mean of 0.0273 and stdev of  
867 0.00332 was used for the ucl.d.mean of *cyt b*, as recently adjusted for *A. wolterstorffi* by Garcez et  
868 al. (2018). The analysis encompassed 50,000,000 generations, with trees and parameters sampled  
869 every 1,000 iterations, and a burn-in of 10%. Results were visualized in Tracer 1.7 (Rambaut et al.  
870 2018) to evaluate convergence and stationarity and to ensure that all ESS (Effective Sample Sizes)  
871 were above 200. The maximum credibility tree was inferred by TreeAnnotator 1.5.4 (Drummond  
872 and Rambaut 2007) and edited in FigTree 1.4.3. All the phylogenetic trees were rooted with *A.*  
873 *wolterstorffi*.

874

## 875 **Results**

876 Sequences spanning 773 bp of the mitochondrial *cyt b* gene, 1141 bp of the mitochondrial CO1  
877 gene and 620 bp of the nuclear ENC1 gene were characterized, respectively, for 93, 102 and 52  
878 individuals of *A. minuano* collected at 6 different localities and 19, 13 and 8 individuals of *A.*  
879 *pongondo* collected at one locality. The *A. minuano* intraspecific matrix encompassed 41 and 47  
880 haplotypes for *cyt b* and CO1, respectively, while the matrix of *A. pongondo* presented 6 and 4  
881 haplotypes, respectively. For ENC1, 41 alleles were detected for *A. minuano* and 11 for *A.*  
882 *pongondo*.

883         Despite minor differences in variability levels, CO1, *cyt b* and ENC1 presented similar  
884 divergence patterns in the target species, and specially the mitochondrial loci subdivided the  
885 samples into four distinct clusters: (1) *A. pongondo* (*pongondo*, with haplotypes sampled at the  
886 municipality of Rio Grande – district of Povo Novo, RS, Brazil - located on the West margin of  
887 the Patos lagoon); (2) *A. minuano* cluster 1 (*minuano 1*, clustering haplotypes sampled in seven  
888 localities of Rio Grande – district of Ilha do Leonídeo, RS, Brazil - West margin of the Patos  
889 lagoon); (3) *A. minuano* cluster 2 (*minuano 2*, grouping together the haplotypes sampled in three

890 localities of São José do Norte, RS, Brazil (SJN3, SJN4 and SJN/Bujuru) - located on the East  
891 margin of the Patos lagoon); and (4) *A. minuano* cluster 3 (minuano 3, with haplotypes sampled  
892 at SJN/Bujuru, Tavares and Tavares/Talha Mar, RS, Brazil - located on the East margin of the  
893 Patos lagoon).

894

## 895 **Genetic diversity and population structure**

### 896 *Cyt b and CO1 datasets*

897 The haplotype networks reconstructed with *cyt b* and CO1 datasets, both individually or in  
898 combination revealed the presence of the four independent haplogroups (Figs. 1B-D): (1)  
899 Pongondo; (2) minuano 1; (3) minuano 2; and (4) minuano 3. No haplotype was shared between  
900 these haplogroups in any of the three cases (Fig. 1B-D). The population structure that maximized  
901 the differentiation between groups while preserving geographical homogeneity in the SAMOVA  
902 performed with the mitochondrial concatenated matrix subdivided the samples in three groups  
903 (pongondo, minuano 1 and minuano 2 + minuano 3), which were able to explain 61% of the  
904 variation encountered. This value rises to 93% when the four clusters are considered. BAPS  
905 analysis also suggested subdivision in four clusters.

906 With the concatenated mitochondrial dataset, the number of haplotypes per sampling  
907 locality ranged from 4 (minuano 1) to 27 (minuano 3), with minimum Hd of 0.889 and  $\pi$  of 0.00136  
908 (pongondo), and maximum Hd and  $\pi$  values of 1.00 and 0.00481 (minuano 2), respectively (Table  
909 1). None locality presented significant deviations from neutrality (Table 1). All pairwise  
910 comparisons between populations detected significant genetic structure, and Fst values varied from  
911 0.86 (in the comparison between minuano 2 and minuano 3) to 0.99 (in the comparison between  
912 pongondo and minuano 1) (Table 2). The Mantel test did not indicate a significant correlation  
913 between genetic and geographic distances ( $r = -0.65$ ;  $p < 1.000$ ).

914 **Table 1.** CO1 + Cyt *b* genetic diversity estimates and neutrality tests for each of the four clusters suggested in this  
 915 study (see Results).

Groups	CO1 + Cyt <i>b</i>					
	N	H	Hd	$\pi$	Neutrality tests	
					Tajima's D	Fu's F
<b>Pongondo</b>	9	6	0.889±0.091	0.00136±0.0001	1.7762	-1.496
<b>Minuano 1</b>	5	4	0.900±0.161	0.00178±0.0006	-0.8073	-0.128
<b>Minuano 2</b>	6	6	1.000±0.096	0.00481±0.0008	-0.5443	-1.086
<b>Minuano 3</b>	32	27	0.990±0.010	0.00354±0.0003	-1.4435	-18.444
<b>Total</b>	52	43	0.992±0.005	0.03415±0.0058	-0.1144	-2.329

916 N, the number of sequences; H, number of haplotypes; Hd, haplotype (gene) diversity;  $\pi$ , nucleotide diversity (per  
 917 site); Tajima's D and Fu's Fs, neutrality tests. The values in bold indicate significant measures ( $P < 0.05$ ).

918

919 **Table 2.** CO1 + Cyt *b* pairwise fixation indices (FST) between the four clusters suggested in this study.

Clusters	Pongondo	Minuano 1	Minuano 2	Minuano 3
<b>Pongondo</b>	0			
<b>Minuano 1</b>	0.98615*	0		
<b>Minuano 2</b>	0.93882*	0.96557*	0	
<b>Minuano 3</b>	0.92419*	0.96751*	0.85956*	0

920 Asterisks indicate significant differences ( $P < 0.05$ ).

921

922 Net Tamura 3-parameters performed only with cyt *b* sequences revealed that the four  
 923 lineages differed by a minimum of 0.019 (as seen between populations of minuano 2 and minuano  
 924 3) and a maximum of 0.129 (as seen between pongondo and minuano 1) (Table 3, below diagonal).

925 The values for COI ranged from 0.020 (as seen between populations of minuano 2 and minuano  
 926 3) and to 0.108 (as seen between pongondo and minuano 1) (Table 3, above diagonal).

927  
 928 **Table 3.** Net Tamura 3-parameters distances between the four clusters suggested in this study, as measured by cyt *b*  
 929 (below diagonal) and COI (above diagonal).

Clusters	Pongondo	Minuano 1	Minuano 2	Minuano 3
<b>Pongondo</b>	0	0.108	0.037	0.032
<b>Minuano 1</b>	0.129	0	0.096	0.098
<b>Minuano 2</b>	0.047	0.116	0	0.020
<b>Minuano 3</b>	0.050	0.123	0.019	0

930

931 ***ENC1 dataset***

932 The haplotype network reconstructed with ENC1 phased alleles somewhat supported  
 933 subdivision between clusters (Figure 1E), although structure was by no means so clear as that  
 934 recovered for the mitochondrial loci. In this sense, this network revealed the presence of one  
 935 putative ancestral allele that is shared between minuano 2 and minuano 3 (Fig. 1E), besides some  
 936 cases of intermingled structure. Accordingly, population structure suggested by SAMOVA  
 937 subdivided the samples in three groups (pongondo, minuano 1 and minuano 2 + minuano 3) that  
 938 were able to explain 51% of the variation encountered. Such a structure was also supported by  
 939 BAPS.

940 Concerning ENC1 diversity estimates, the number of alleles per sampling locality ranged  
 941 from 6 (minuano 1) to 19 (minuano 2 and minuano 3), with minimum  $H_e$  of 0.681 and  $\pi$  of 0.0028  
 942 (minuano 1), and maximum  $H_e$  and  $\pi$  values of 0.942 and 0.00538 (pongondo), respectively (Table  
 943 4). None locality presented significant deviations from neutrality (Table 4). All pairwise  
 944 comparisons between populations detected significant genetic structure between clusters, and  $F_{st}$

945 values varied from 0.26 (in the comparison between minuano 2 and minuano 3) to 0.79 (in the  
 946 comparison between minuano 1 and minuano 3) (Table 5). The Mantel test did not indicate a  
 947 significant correlation between genetic and geographic distances ( $r = -0.15$ ;  $p < 0.503$ ).

948  
 949 **Table 4.** ENC1 genetic diversity estimates and neutrality tests for each of the four clusters suggested in this study (see  
 950 Results).

Groups	ENC1					
	N	A	He	$\pi$	Neutrality tests	
					Tajima's D	Fu's F
<b>Pongondo</b>	16	11	0.942±0.041	0.00538±0.0010	-1.5368	-4.700
<b>Minuano 1</b>	14	6	0.681±0.132	0.00282±0.0009	-1.4683	-1.333
<b>Minuano 2</b>	38	19	0.939±0.021	0.00466±0.0003	-0.4222	-11.208
<b>Minuano 3</b>	52	19	0.868±0.037	0.00375±0.0005	-1.5040	-11.076
<b>Total</b>	120	52	0.959±0.009	0.00756±0.0004	-1.2814	-43.347

951 N, the number of sequences; A, number of alleles; He, expected heterozygosity;  $\pi$ , nucleotide diversity (per site);  
 952 Tajima's D and Fu's Fs, neutrality tests. The values in bold indicate significant measures ( $P < 0.05$ ).

953

954 **Table 5.** ENC1 pairwise fixation indices (FST) between the four clusters suggested in this study.

Clusters	Pongondo	Minuano 1	Minuano 2	Minuano 3
<b>Pongondo</b>	0			
<b>Minuano 1</b>	0.65396*	0		
<b>Minuano 2</b>	0.31578*	0.69095*	0	
<b>Minuano 3</b>	0.52005*	0.78768*	0.26320*	0

955 The asterisks indicate significant differences ( $P < 0.05$ ).

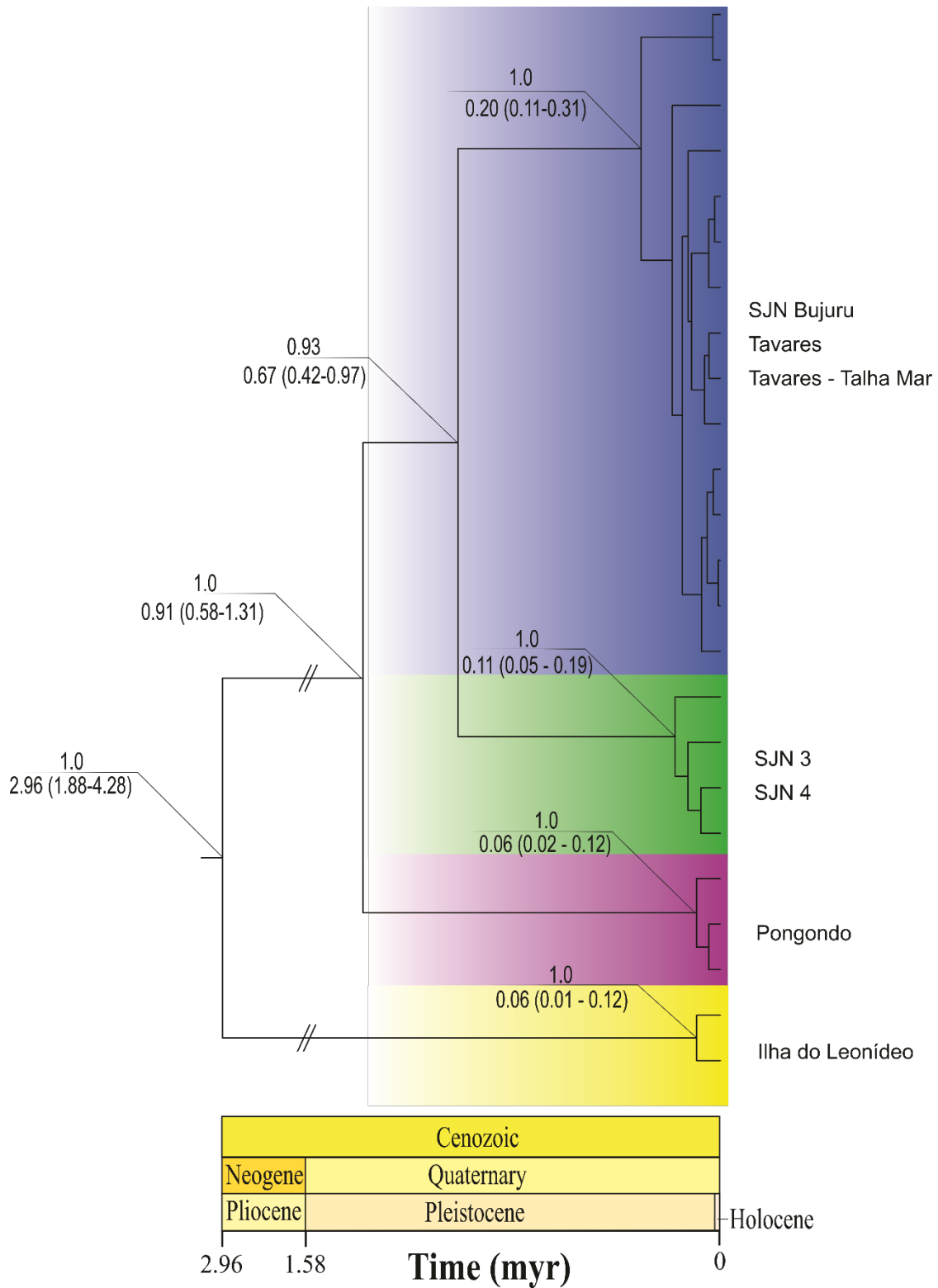
956

957 **Spatiotemporal scenario**

958 **Concatenated dataset**

959 In agreement with previous results, the topologies of the supermatrix trees also supported  
960 subdivision into four clusters, which were recovered as reciprocally monophyletic groups in BA  
961 tree, with posterior probabilities of 1.00 (Fig. 2). Among the four lineages, minuano 1  
962 encompassed the early offshoot, and this divergence was dated to approximately 3 Mya.  
963 Conversely, pongondo diverged from the clade encompassing minuano 2 and minuano 3 quite  
964 more recently, about 0.9 Mya. Diversifications of each of the four population groups were set  
965 between 0.2 and 0.06 myr (Fig. 2).

966



967  
 968 **Figure 2.** Bayesian chronophylogenetic tree based on *cyt b*, CO1 and ENC1 sequences sampled for *A. minuano* sensu  
 969 lato e *A. pongondo*. Values above the branches represent support values, given by posterior probabilities values in  
 970 BA. Values below the branches represent mean and 95% confidence intervals of divergence or diversification dates,  
 971 as reconstructed in Beast. Groups of populations were represented by their respective names and colors (see other  
 972 figures).



973 **Discussion**

974 Some species, such as *Austrolebias minuano*, encompass a set of unique populations that are small  
975 and isolated from each other by natural or anthropogenic barriers of reproductive isolation (Gibbs  
976 2000). These barriers facilitate the processes of vicariance and allopathic speciation within these  
977 environments (Ritchie 2007; Berois et al. 2015). In line with this premise, the analyses revealed  
978 that, in addition to several cases of significantly high levels of differentiation between groups of  
979 populations, *A. minuano* is subdivided into at least two different population groups, in addition to  
980 *A. pongondo*. Such structure was suggested by the Networks, SAMOVA, BAPS and phylogenetic  
981 analyses performed individually or in combination for all the employed molecular markers, and,  
982 also, supported by the complete absence of mitochondrial haplotype sharing between the groups.  
983 This suggests that vicariance has played an important role in the genetic diversification of *A.*  
984 *minuano*, as also revealed for several other species of Rivulidae (Jowers et al. 2008; Bartáková et  
985 al. 2013; Ponce de León et al. 2014; García et al. 2015; Loureiro et al. 2015; Garcez et al. 2018).  
986 Moreover, once again, genetic data evidenced the role played by large water bodies and large  
987 terrestrial areas disproved of suitable ponds as barriers to gene flow in killifish (Maltagliati 1998;  
988 Markert et al. 2010).

989         Allopatric fragmentation seems to be an ongoing process within *A. minuano* and there  
990 appears to be no current gene flow between the groups. This can be evidenced through the  
991 significant and high  $F_{ST}$  values recovered between the two groups of populations of *A. minuano*  
992 and *A. pongondo*, which differed by a minimum of 4.7% and 3.7% corrected distances regarding  
993 the mitochondrial genes *cyt b* and CO1 genes, respectively. In fact, divergence values as high as  
994 12.9% and 10.8% were found for *cyt b* and CO1, respectively, between minuano 1 and *A.*  
995 *pongondo*, two populations that are just 21 km apart and inhabit the west margin of the Patos  
996 Lagoon. Thus, the status of *A. pongondo* as a distinct species (Costa et al. 2017) is here  
997 corroborated, as well as that of minuano 1, which differed from the other population groups by a

998 minimum of 11.6% for *cyt b* and 9.6% for CO1. As this lineage inhabits the type locality of the  
999 species (Costa and Cheffe 2001; Costa et al. 2017) it encompasses the actual *A. minuano*.

1000         Although the east Margin of the Patos Lagoon is clearly inhabited by distinct species of *A.*  
1001 *minuano*, the status of the two population groups it embraces is by far not so clear. These  
1002 populations encompass reciprocally monophyletic lineages that differ between each other by about  
1003 1.9% and 2% for *cytb* and CO1, respectively. As distances as small as 1.4% were previously found  
1004 for *cyt b* among different species of *Austrolebias* (Garcia et al. 2000), and even lower ranges (0 to  
1005 1.8%) were reported recently within the species complexes of *A. wolterstorffi* and *A. bellottii* (  
1006 Steindachner, 1881; García et al. 2015; Alonso et al. 2016; Garcez et al. 2018), we can reliably  
1007 state that even minuano 2 and minuano 3 encompass distinct evolutionary lineages, whose  
1008 conservation needs to be independently assured. So, this study provides an additional example of  
1009 the importance of molecular techniques in recovering the evolutionary status presented by cryptic  
1010 populations of killifish, as previously reported by Costa (2013). It is important to emphasize,  
1011 nevertheless, that careful morphological inspection needs to be performed in each of these  
1012 population groups in order to confirm the level of morphological divergence.

1013         In this scenario where a single species is splitted into a species complex, it is quite  
1014 interesting to see that all clusters have shown reasonable levels of genetic diversity. Such results  
1015 were previously reported for other species of *Austrolebias* (Garcia et al. 2000; Bartáková et al.  
1016 2013; García et al. 2015; Garcez et al. 2018)) and are possibly explained by small-scale events of  
1017 gene flow within population groups or even by high mutation rates (García et al. 2015; Garcez et  
1018 al. 2018). Nevertheless, this is by no means an indicative that the species are dealing well with  
1019 anthropogenic impact. In fact, all the species, or lineages are severely threatened because of their  
1020 limited distribution and wide fragmentation and degradation of wetlands in the region (Volcan et  
1021 al. 2015).

1022           Concerning the spatio-temporal evolutionary scenario, minuano 1 encompassed the early  
1023 offshoot of the species complex, being followed by *A. pongondo*. Since these are the lineages  
1024 encountered on the western margin of the Patos Lagoon, this allows hypothesizing that a  
1025 colonization event occurred across the Lagoon to form the two clusters found on the eastern margin  
1026 (minuano 2 and minuano 3). This pattern contrasts with that encountered for *A. wolterstorffi*, for  
1027 which population groups inhabiting the eastern and western margin of the Patos Lagoon constitute  
1028 reciprocally monophyletic clusters (Garcez et al. 2018). The contrasting pattern can also be  
1029 evidenced by the older divergence dates obtained in this study, in which divergence between  
1030 population groups were dated between 3-0.67 Mya. This suggests ancestral populations of the *A.*  
1031 *minuano* complex were diversifying quite earlier than the occurrence of the first Pleistocene  
1032 Lagoon Barrier Depositional System related to the paleogeographic evolution of the South  
1033 American Coastal Plain, dated to approximately 400 kyr (Montaña and Bossi 1995; Tomazelli and  
1034 Villwock 2005; Villwock and Tomazelli 2007). This pattern will certainly be complemented by  
1035 further inclusion of samples from the other species of the *A. adloffii* species group, since there are  
1036 possibly more intermediate clades to be added in this picture.

1037           In general, this study certainly helps in promoting a better comprehension of the evolution  
1038 and conservation concerns related to the diversity of annual fishes (which include one of the most  
1039 threatened vertebrate groups in the country) (ICMbio 2012; Volcan et al. 2015) on the South  
1040 American Coastal Plain. It is hopeful, therefore, that the knowledge achieved here will be applied  
1041 in the implementation and promotion of environmental education programs, thus encouraging the  
1042 demarcation of new protection areas. Only a set of actions can save this “unique and biologically  
1043 fascinating group of species” (Garcez et al. 2018) from extinction.

1044  
1045  
1046

1047 **Conflict of interest**

1048 There is no conflict of interest.

1049 All authors contributed equally to this work.

1050

1051

1052

1053

1054

1055

1056

1057

1058

1059

1060

1061

1062

1063

1064

1065

1066

1067

1068

1069

1070

1071

1072 **References**

- 1073
- 1074 Akaike H (1974) A New Look at the Statistical Model Identification. IEEE Trans Automat Contr  
1075 19:716–723. doi: 10.1109/TAC.1974.1100705
- 1076 Alonso F, Calviño P, Terán GE, García I (2016) Geographical distribution of *Austrolebias*  
1077 *monstrosus* (Huber, 1995), *A. elongatus* (Steindachner, 1881) and *A. vanderbergi* (Huber,  
1078 1995) (Teleostei: Cyprinodontiformes), with comments on the biogeography and ecology of  
1079 Rivulidae in Pamasic and Chaco floodp. Check List 12:1–7. doi: 10.4067/S0716-  
1080 078X2013000300013
- 1081 Alonso F, Terán GE, Calviño P, et al (2018) An endangered new species of seasonal killifish of  
1082 the genus *austrolebias* (cyprinodontiformes: Aplocheiloidei) from the bermejo river basin in  
1083 the western chacoan region. PLoS One 13:1–20. doi: 10.1371/journal.pone.0196261
- 1084 Bandelt H-J, Forster P, Rohlf A (1999) Median-Joining Networks for Inferring Intraspecific  
1085 Phylogenies. Mol Biol Evol 16:37–48. doi: 10.1093/oxfordjournals.molbev.a026036
- 1086 Bartáková V, Reichard M, Janko K, et al (2013) Strong population genetic structuring in an  
1087 annual fish, *Nothobranchius furzeri*, suggests multiple savannah refugia in southern  
1088 Mozambique. BMC Evol Biol 13:. doi: 10.1186/1471-2148-13-196
- 1089 Beheregaray L, Attard C, Brauer C, Hammer M (2016) Innovations in conservation: How  
1090 genetics can help save freshwater fishes. Wildl Aust 53:34–37. doi: 10.1111/j.1095-  
1091 8649.1998.tb01039.x
- 1092 Berois N, García G, de Sá R (2015) Annual Fishes: Life History Strategy, Diversity, and  
1093 Evolution. Taylor & Francis Group, New York
- 1094 Corander J, Sirén J, Arjas E (2008) Bayesian spatial modeling of genetic population structure.  
1095 Comput Stat 23:111–129. doi: 10.1007/s00180-007-0072-x
- 1096 Costa WJEM (2006) The South American annual killifish genus *Austrolebias* (Teleostei:

- 1097 Cyprinodontiformes: Rivulidae): phylogenetic relationships, descriptive, morphology and  
1098 taxonomic revision. *Zootaxa* 1213:1–162
- 1099 Costa WJEM (2013) Historical biogeography of aplocheiloid killifishes (Teleostei:  
1100 Cyprinodontiformes). *Vertebr Zool* 63:139–154. doi: 10.1371
- 1101 Costa WJEM, Amorim PF (2011) A new annual killifish species of the *Hypsolebias*  
1102 *flavicaudatus* complex from the são francisco river basin, Brazilian Caatinga  
1103 (Cyprinodontiformes: Rivulidae). *Vertebr Zool* 61:99–104
- 1104 Costa WJEM, Cheffe MM (2001) Three new annual fishes of the genus *Austrolebias* from the  
1105 laguna dos Patos system, southern Brazil, and a redescription of *A. adloffii* (Ahl)  
1106 (Cyprinodontiformes: Rivulidae). *Comun do Mus Ciências e Tecnol da PUCRS, Série Zool*  
1107 179–200
- 1108 Costa WJEM, Cheffe MM, Amorim PF (2017) Two new seasonal killifishes of the *Austrolebias*  
1109 *adloffii* group from the Lagoa dos Patos basin, southern Brazil (Cyprinodontiformes:  
1110 Aplocheilidae). *Vertebr Zool* 67:139–149
- 1111 Darriba D, Taboada G, Doallo R, Posada D (2012) jModelTest 2: more models, new heuristics  
1112 and parallel computing *To. Nat Methods* 9:772. doi: 10.1038/nmeth.2109
- 1113 Drummond AJ, Rambaut A (2007) Bayesian evolutionary analysis by sampling trees. *Bayesian*  
1114 *Evol Anal with BEAST* 8:79–96. doi: 10.1590/2175-7860201667537
- 1115 Dupanloup I, Schneider S, L. E (2002) A simulated annealing approach to define the genetic.  
1116 *Mol Ecol* 11:2571–2581. doi: 10.1046/j.1365-294X.2002.01650.x
- 1117 Fontana CS. BGA. RRE (2003) Livro vermelho da fauna ameaçada de extinção no Rio Grande  
1118 do Sul. Edipucrs, Porto Alegre
- 1119 Fu YX (1997) Statistical tests of neutrality of mutations against population growth, hitchhiking  
1120 and background selection. *Genetics* 147:915–925. doi: genetics.org//147/2/915
- 1121 Furness AI (2016) The evolution of an annual life cycle in killifish: adaptation to ephemeral

1122 aquatic environments through embryonic diapause. *Biol Rev Camb Philos Soc* 91:796–812.  
1123 doi: 10.1111/brv.12194

1124 Garcez DK, Barbosa C, Loureiro M, et al (2018) Phylogeography of the critically endangered  
1125 neotropical annual fish, *Austrolebias wolterstorffi* (Cyprinodontiformes: Aplocheilidae):  
1126 genetic and morphometric evidence of a new species complex. *Environ Biol Fishes*  
1127 101:1503–1515. doi: 10.1007/s10641-018-0795-2

1128 García G, Ríos N, Gutiérrez V (2015) Next-generation sequencing detects repetitive elements  
1129 expansion in giant genomes of annual killifish genus *Austrolebias* (Cyprinodontiformes,  
1130 Rivulidae). *Genetica* 143:353–360. doi: 10.1007/s10709-015-9834-5

1131 Garcia G, Wlasiuk G, Lessa EP (2000) High levels of mitochondrial cytochrome b divergence  
1132 and phylogenetic relationships in the annual killifishes of the genus *Cynolebias*  
1133 (Cyprinodontiformes, Rivulidae). *Zool J Linn Soc* 129:93. doi: 10.1006/zjls.1999.0202

1134 Gibbs JP (2000) Wetland loss and biodiversity conservation. *Conserv Biol* 14:314–317. doi:  
1135 10.1046/j.1523-1739.2000.98608.x

1136 ICMbio (2012) Plano de Ação Nacional para a Conservação dos Peixes Rivulídeos Ameaçados  
1137 de Extinção. [http://www.icmbio.gov.br/portal/faunabrasileira/plano-de-acao-nacional-](http://www.icmbio.gov.br/portal/faunabrasileira/plano-de-acao-nacional-lista/2833-plano-de-acao-nacional-para-a-conservacao-dos-rivulideos)  
1138 [lista/2833-plano-de-acao-nacional-para-a-conservacao-dos-rivulideos](http://www.icmbio.gov.br/portal/faunabrasileira/plano-de-acao-nacional-lista/2833-plano-de-acao-nacional-para-a-conservacao-dos-rivulideos). Accessed 20 Aug  
1139 2018

1140 Jowers MJ, Cohen BL, Downie JR (2008) The cyprinodont fish *Rivulus* (Aplocheiloidei:  
1141 Rivulidae) in Trinidad and Tobago: Molecular evidence for marine dispersal, genetic  
1142 isolation and local differentiation. *J Zool Syst Evol Res* 46:48–55. doi: 10.1111/j.1439-  
1143 0469.2007.00422.x

1144 Li C, Ortí G, Zhang G, Lu G (2007) A practical approach to phylogenomics: The phylogeny of  
1145 ray-finned fish (Actinopterygii) as a case study. *BMC Evol Biol* 7:1–11. doi: 10.1186/1471-  
1146 2148-7-44

- 1147 Librado P, Rozas J (2009) DnaSP v5: A software for comprehensive analysis of DNA  
1148 polymorphism data. *Bioinformatics* 25:1451–1452. doi: 10.1093/bioinformatics/btp187
- 1149 Loureiro, M.; de Sá RO (2015) Diversity of Aplocheiloidei. In: CRC Press Taylor & Francis  
1150 group (ed) *Annual Fishes: Life History Strategy, Diversity, and Evolution*. pp 1–342
- 1151 Loureiro M, Borthagaray A, Hernández D, et al (2015) Austrolebias in Space: scaling from  
1152 ponds to biogeographical regions. *Annu Fishes Life Hist Strateg Divers Evol* 23:125–141
- 1153 Maltagliati F (1998) Does the Mediterranean killifish *Aphanius fasciatus* (Teleostei:  
1154 Cyprinodontidae) fit the one-dimensional stepping-stone model of gene flow? *Environ Biol*  
1155 *Fishes* 53:385–392
- 1156 Markert JA, Schelly RC, Stiassny ML (2010) Genetic isolation and morphological divergence  
1157 mediated by high-energy rapids in two cichlid genera from the lower Congo rapids. *BMC*  
1158 *Evol Biol* 10:. doi: 10.1186/1471-2148-10-149
- 1159 Matioli SR, Fernandes FMC (2012) *Biologia molecular e evolução*. Holos, São Paulo
- 1160 Montaña JR, Bossi J (1995) *Geomorfología de los humedales de la cuenca de la laguna Merín en*  
1161 *el departamento de Rocha.*, 2nd edn. Probides, Rocha
- 1162 Palumbi S, Martin A, Romano S, et al (2002) Evaluación de alternativas racionales de manejo de  
1163 las principales enfermedades de la naranjilla en Palora-Ecuador. *Estac Exp St Catalina*  
1164 *INIAP* 2:45. doi: 10.1017/CBO9781107415324.004
- 1165 Ponce de León JL, León G, Rodríguez R, et al (2014) Phylogeography of Cuban Rivulus:  
1166 Evidence for allopatric speciation and secondary dispersal across a marine barrier. *Mol*  
1167 *Phylogenet Evol* 79:404–414. doi: 10.1016/j.ympev.2014.07.007
- 1168 Rambaut A, Drummond AJ, Xie D, et al (2018) Molecular evolution, phylogenetics and  
1169 epidemiology. In: *Tracer v1.7*. <http://tree.bio.ed.ac.uk/software/tracer/>. Accessed 28 Aug  
1170 2018
- 1171 Ritchie MG (2007) Sexual Selection and Speciation. *Annu Rev Ecol Evol Syst* 38:102. doi:



1172 10.1146/annurev.ecolsys.38.091206.095733

1173 Ronquist F, Teleslenko M, Mark P Van Der, et al (2012) MrBayes 3.2: Efficient Bayesian  
1174 Phylogenetic Inference and Model Choice Across a Large Model Space. Syst Biol 61:1–4.  
1175 doi: 10.1093/sysbio/sys029

1176 Rosa RS, Lima FCT (2008) Peixes. Ministério do Meio Ambiente, Brasília

1177 Sambrook J FE and MT (1989) Molecular cloning: a laboratory manual. Cold Spring Harb Lab  
1178 Press

1179 Sedláček O, Baciaková B, Kratochvíl L (2014) Evolution of body colouration in killifishes  
1180 (Cyprinodontiformes: Aplocheilidae, Nothobranchiidae, Rivulidae): Is male ornamentation  
1181 constrained by intersexual genetic correlation? Zool Anz 253:207–215. doi:  
1182 10.1016/j.jcz.2013.12.004

1183 SEMA (2014) Secretaria Estadual de Meio Ambiente. Reavaliação da Lista das Espécies da  
1184 Fauna Silvestre Ameaçadas de Extinção no Rio Grande do Sul.  
1185 [http://www.al.rs.gov.br/filerepository/repLegis/arquivos/DEC 51.797.pdf](http://www.al.rs.gov.br/filerepository/repLegis/arquivos/DEC_51.797.pdf). Accessed 16 Nov  
1186 2018

1187 Serra WS, Loureiro M (2018) *Austrolebias queguay* (Cyprinodontiformes, Rivulidae), a new  
1188 species of annual killifish endemic to the lower Uruguay river basin. Zoosystematics Evol  
1189 94:547–556. doi: 10.3897/zse.94.29115

1190 Staden R (1996) The Staden Sequence Analysis Package. Appl Biochem Biotechnol - Part B  
1191 Mol Biotechnol 5:233–241. doi: 10.1007/BF02900361

1192 Tajima F (1989) Statistical Method for Testing the Neutral Mutation. MathstatConcordiaCa  
1193 595:585–595. doi: PMC1203831

1194 Tamura K, Stecher G, Peterson D, et al (2013) MEGA6: Molecular evolutionary genetics  
1195 analysis version 6.0. Mol Biol Evol 30:2725–2729. doi: 10.1093/molbev/mst197

1196 Tomazelli LJ, Villwock JA (2005) Mapeamento geológico de planícies costeiras: o exemplo da

1197 costa do Rio Grande do Sul. Gravel 3:109–115

1198 Villwock JA, Tomazelli LJ (2007) Geologia costeira do Rio Grande do Sul. In: Centro de  
1199 Estudos de Geologia Costeira e Oceânica. pp 1–45

1200 Volcan MV, Esteban L, Lanés K, et al (2014) *Austrolebias bagual* , a new species of annual fish  
1201 (Cyprinodontiformes : Rivulidae) from southern Brazil. Int J Ichthyol 20:

1202 Volcan M V., Lanés LEK, Gonçalves ÂC, Guadagnin DL (2015) Annual fishes (Rivulidae) from  
1203 Southern Brazil: A broad-scale assessment of their diversity and conservation. In: Group  
1204 CPT& F (ed) Annual Fishes: Life History Strategy, Diversity, and Evolution., 1st edn. pp  
1205 1–342

1206 Wolf C (1999) PCR - RFLP Analysis of Mitochondrial DNA : A Reliable Method for Species  
1207 Identification. 000:1350–1355

1208

1209

1210

1211

1212

1213

1214

1215

1216

1217

1218

1219

1220

1221

1222 **Supplementary Material**

1223

1224 **Table S 1.** Summary of sampling localities, with their respective identification codes, geographical coordinates and

1225 amplified genes

Species	ID	General Information		Amplified Genes		
		Population	Coordinates	CO1	Cyt <i>b</i>	ENC1
<i>A. pongongo</i>	1M1	RG - Povo Novo	-31.922537 -52.312918		X	X
<i>A. pongongo</i>	1M2	RG - Povo Novo	-31.922537 -52.312918			
<i>A. pongongo</i>	1M3	RG - Povo Novo	-31.922537 -52.312918		X	
<i>A. pongongo</i>	1M4	RG - Povo Novo	-31.922537 -52.312918	X	X	
<i>A. pongongo</i>	1M5	RG - Povo Novo	-31.922537 -52.312918	X	X	
<i>A. pongongo</i>	1M6	RG - Povo Novo	-31.922537 -52.312918	X	X	
<i>A. pongongo</i>	1M7	RG - Povo Novo	-31.922537 -52.312918	X	X	X
<i>A. pongongo</i>	1M8	RG - Povo Novo	-31.922537 -52.312918	X	X	
<i>A. pongongo</i>	1M9	RG - Povo Novo	-31.922537 -52.312918		X	
<i>A. pongongo</i>	1M10	RG - Povo Novo	-31.922537 -52.312918	X	X	
<i>A. pongongo</i>	1M11	RG - Povo Novo	-31.922537 -52.312918	X	X	X
<i>A. pongongo</i>	1M12	RG - Povo Novo	-31.922537 -52.312918	X	X	X
<i>A. pongongo</i>	1M13	RG - Povo Novo	-31.922537 -52.312918	X	X	X
<i>A. pongongo</i>	1M14	RG - Povo Novo	-31.922537 -52.312918	X	X	
<i>A. pongongo</i>	1M15	RG - Povo Novo	-31.922537 -52.312918		X	X
<i>A. pongongo</i>	1M16	RG - Povo Novo	-31.922537 -52.312918		X	X
<i>A. pongongo</i>	1M17	RG - Povo Novo	-31.922537 -52.312918	X	X	
<i>A. pongongo</i>	1M18	RG - Povo Novo	-31.922537 -52.312918	X	X	
<i>A. pongongo</i>	1M19	RG - Povo Novo	-31.922537 -52.312918		X	X
<i>A. pongongo</i>	1M20	RG - Povo Novo	-31.922537 -52.312918	X	X	
<i>A. minuano</i>	2M1	RG - Ilha do Leonídeo	-32.050478 -52.227949	X	X	
<i>A. minuano</i>	2M2	RG - Ilha do Leonídeo	-32.050478 -52.227949			
<i>A. minuano</i>	2M3	RG - Ilha do Leonídeo	-32.050478 -52.227949	X	X	X
<i>A. minuano</i>	2M4	RG - Ilha do Leonídeo	-32.050478 -52.227949		X	
<i>A. minuano</i>	2M5	RG - Ilha do Leonídeo	-32.050478 -52.227949	X		
<i>A. minuano</i>	2M6	RG - Ilha do Leonídeo	-32.050478 -52.227949		X	
<i>A. minuano</i>	2M7	RG - Ilha do Leonídeo	-32.050478 -52.227949		X	
<i>A. minuano</i>	2M8	RG - Ilha do Leonídeo	-32.050478 -52.227949	X	X	
<i>A. minuano</i>	2M9	RG - Ilha do Leonídeo	-32.050478 -52.227949			
<i>A. minuano</i>	2M10	RG - Ilha do Leonídeo	-32.050478 -52.227949		X	X
<i>A. minuano</i>	2M11	RG - Ilha do Leonídeo	-32.050478 -52.227949		X	X
<i>A. minuano</i>	2M12	RG - Ilha do Leonídeo	-32.050478 -52.227949	X		
<i>A. minuano</i>	2M13	RG - Ilha do Leonídeo	-32.050478 -52.227949	X		
<i>A. minuano</i>	2M14	RG - Ilha do Leonídeo	-32.050478 -52.227949	X	X	
<i>A. minuano</i>	2M15	RG - Ilha do Leonídeo	-32.050478 -52.227949	X	X	X

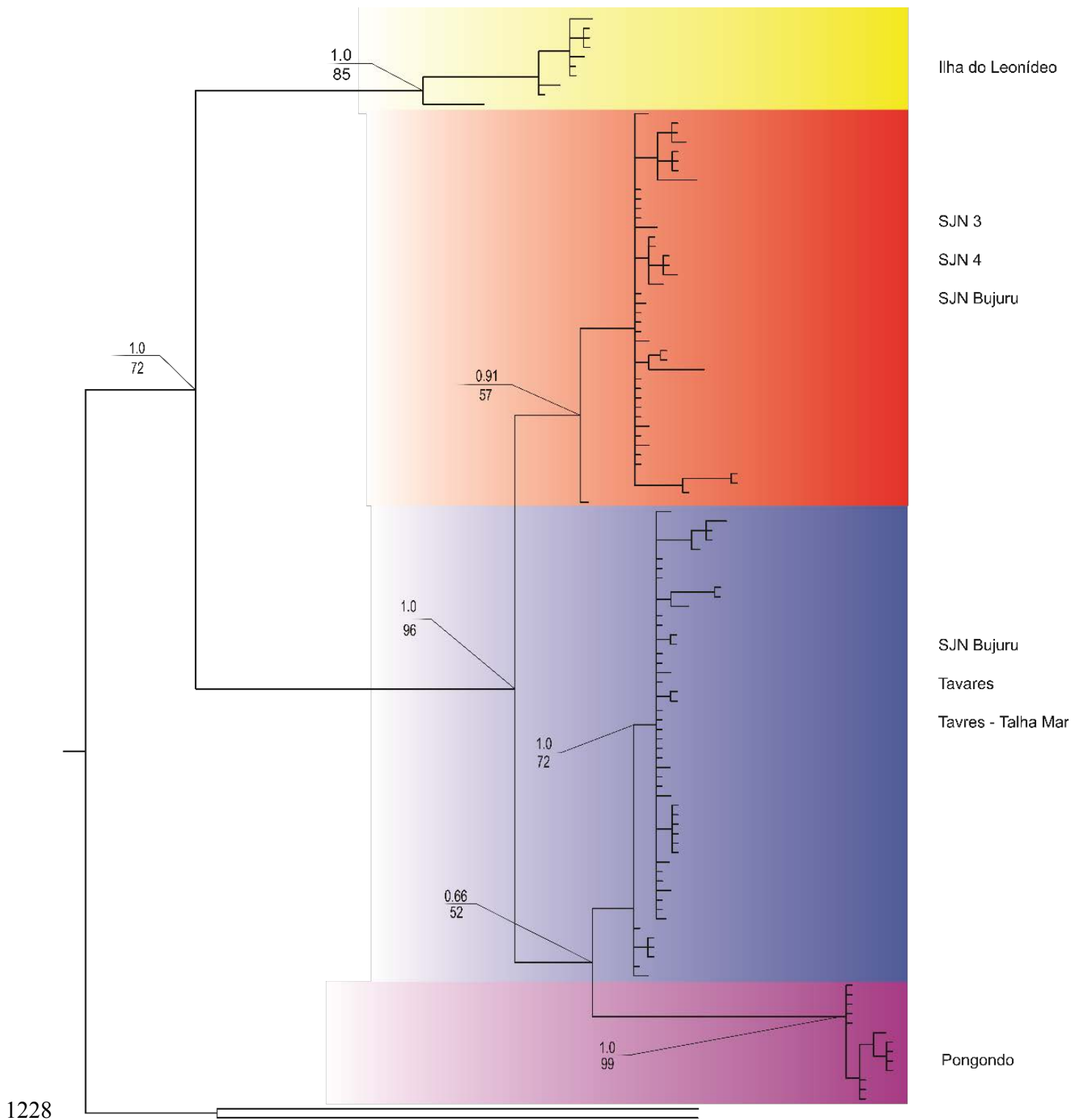
<i>A. minuano</i>	2M16	RG - Ilha do Leonídeo	-32.050478 -52.227949	X	X	X
<i>A. minuano</i>	2M17	RG - Ilha do Leonídeo	-32.050478 -52.227949		X	X
<i>A. minuano</i>	2M18	RG - Ilha do Leonídeo	-32.050478 -52.227949		X	X
<i>A. minuano</i>	2M19	RG - Ilha do Leonídeo	-32.050478 -52.227949	X	X	
<i>A. minuano</i>	2M20	RG - Ilha do Leonídeo	-32.050478 -52.227949		X	
<i>A. minuano</i>	3M1	SJN - 3	-31.9172 -51.94305			
<i>A. minuano</i>	3M2	SJN - 3	-31.9172 -51.94305	X		X
<i>A. minuano</i>	3M3	SJN - 3	-31.9172 -51.94305	X		
<i>A. minuano</i>	3M4	SJN - 3	-31.9172 -51.94305	X		X
<i>A. minuano</i>	3M5	SJN - 3	-31.9172 -51.94305	X		X
<i>A. minuano</i>	3M6	SJN - 3	-31.9172 -51.94305	X		X
<i>A. minuano</i>	3M7	SJN - 3	-31.9172 -51.94305	X		X
<i>A. minuano</i>	3M8	SJN - 3	-31.9172 -51.94305	X		X
<i>A. minuano</i>	3M9	SJN - 3	-31.9172 -51.94305	X		X
<i>A. minuano</i>	3M10	SJN - 3	-31.9172 -51.94305	X		X
<i>A. minuano</i>	3M11	SJN - 3	-31.9172 -51.94305	X		
<i>A. minuano</i>	3M12	SJN - 3	-31.9172 -51.94305	X		X
<i>A. minuano</i>	3M13	SJN - 3	-31.9172 -51.94305	X		
<i>A. minuano</i>	3M14	SJN - 3	-31.9172 -51.94305	X		X
<i>A. minuano</i>	3M15	SJN - 3	-31.9172 -51.94305	X	X	
<i>A. minuano</i>	3M16	SJN - 3	-31.9172 -51.94305		X	
<i>A. minuano</i>	3M17	SJN - 3	-31.9172 -51.94305	X		
<i>A. minuano</i>	3M18	SJN - 3	-31.9172 -51.94305	X	X	X
<i>A. minuano</i>	3M19	SJN - 3	-31.9172 -51.94305	X	X	
<i>A. minuano</i>	3M20	SJN - 3	-31.9172 -51.94305	X		
<i>A. minuano</i>	4M1	SJN - 4	-31.88016 -51.862027	X		
<i>A. minuano</i>	4M2	SJN - 4	-31.88016 -51.862027	X		
<i>A. minuano</i>	4M3	SJN - 4	-31.88016 -51.862027	X		
<i>A. minuano</i>	4M4	SJN - 4	-31.88016 -51.862027	X		
<i>A. minuano</i>	4M5	SJN - 4	-31.88016 -51.862027	X	X	X
<i>A. minuano</i>	4M6	SJN - 4	-31.88016 -51.862027	X		
<i>A. minuano</i>	4M7	SJN - 4	-31.88016 -51.862027	X		X
<i>A. minuano</i>	4M8	SJN - 4	-31.88016 -51.862027	X		X
<i>A. minuano</i>	4M9	SJN - 4	-31.88016 -51.862027	X		
<i>A. minuano</i>	4M10	SJN - 4	-31.88016 -51.862027	X		X
<i>A. minuano</i>	4M11	SJN - 4	-31.88016 -51.862027	X	X	X
<i>A. minuano</i>	4M12	SJN - 4	-31.88016 -51.862027	X		
<i>A. minuano</i>	4M13	SJN - 4	-31.88016 -51.862027	X	X	
<i>A. minuano</i>	4M14	SJN - 4	-31.88016 -51.862027	X		
<i>A. minuano</i>	4M15	SJN - 4	-31.88016 -51.862027	X		
<i>A. minuano</i>	4M16	SJN - 4	-31.88016 -51.862027	X	X	X
<i>A. minuano</i>	4M17	SJN - 4	-31.88016 -51.862027	X		
<i>A. minuano</i>	4M18	SJN - 4	-31.88016 -51.862027	X		
<i>A. minuano</i>	4M19	SJN - 4	-31.88016 -51.862027	X		

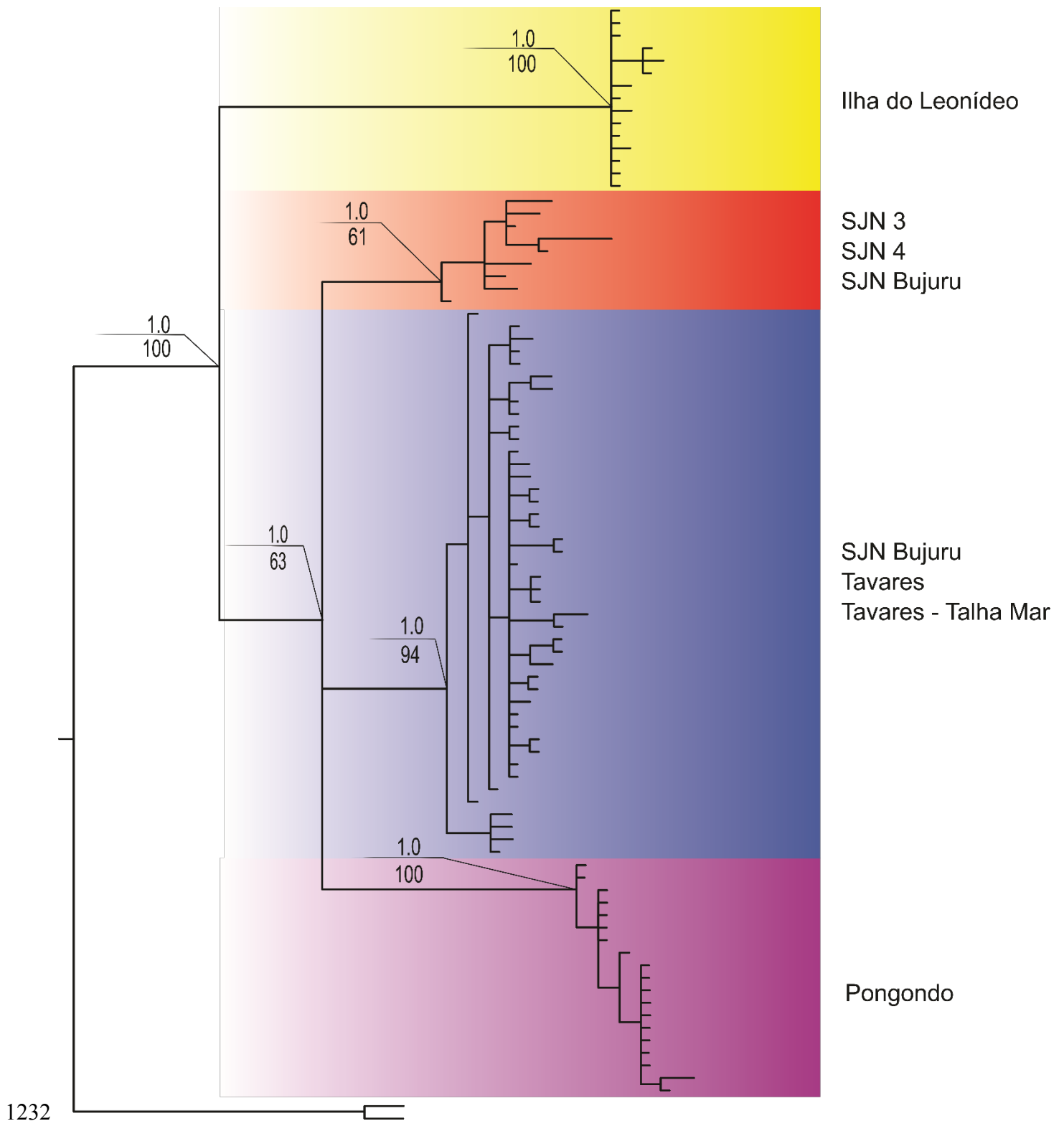
<i>A. minuano</i>	4M20	SJN - 4	-31.88016 -51.862027	X		X
<i>A. minuano</i>	5M1	SJN - Bujuru	-31.5272 -51.291	X		X
<i>A. minuano</i>	5M2	SJN - Bujuru	-31.5272 -51.291	X	X	
<i>A. minuano</i>	5M3	SJN - Bujuru	-31.5272 -51.291	X		
<i>A. minuano</i>	5M4	SJN - Bujuru	-31.5272 -51.291	X	X	
<i>A. minuano</i>	5M5	SJN - Bujuru	-31.5272 -51.291	X		X
<i>A. minuano</i>	5M6	SJN - Bujuru	-31.5272 -51.291	X	X	X
<i>A. minuano</i>	5M7	SJN - Bujuru	-31.5272 -51.291	X	X	X
<i>A. minuano</i>	5M8	SJN - Bujuru	-31.5272 -51.291	X	X	
<i>A. minuano</i>	5M9	SJN - Bujuru	-31.5272 -51.291	X	X	
<i>A. minuano</i>	5M10	SJN - Bujuru	-31.5272 -51.291	X	X	X
<i>A. minuano</i>	5M11	SJN - Bujuru	-31.5272 -51.291			
<i>A. minuano</i>	5M12	SJN - Bujuru	-31.5272 -51.291	X	X	
<i>A. minuano</i>	5M13	SJN - Bujuru	-31.5272 -51.291	X	X	
<i>A. minuano</i>	5M14	SJN - Bujuru	-31.5272 -51.291		X	
<i>A. minuano</i>	5M15	SJN - Bujuru	-31.5272 -51.291	X		
<i>A. minuano</i>	5M16	SJN - Bujuru	-31.5272 -51.291	X	X	
<i>A. minuano</i>	5M17	SJN - Bujuru	-31.5272 -51.291	X		X
<i>A. minuano</i>	5M18	SJN - Bujuru	-31.5272 -51.291	X	X	X
<i>A. minuano</i>	5M19	SJN - Bujuru	-31.5272 -51.291	X	X	
<i>A. minuano</i>	5M20	SJN - Bujuru	-31.5272 -51.291	X	X	
<i>A. minuano</i>	6M1	Tavares	-31.291687 -51.081523	X	X	
<i>A. minuano</i>	6M2	Tavares	-31.291687 -51.081523	X	X	
<i>A. minuano</i>	6M3	Tavares	-31.291687 -51.081523	X	X	X
<i>A. minuano</i>	6M4	Tavares	-31.291687 -51.081523	X	X	
<i>A. minuano</i>	6M5	Tavares	-31.291687 -51.081523	X	X	
<i>A. minuano</i>	6M6	Tavares	-31.291687 -51.081523	X	X	
<i>A. minuano</i>	6M7	Tavares	-31.291687 -51.081523	X	X	X
<i>A. minuano</i>	6M8	Tavares	-31.291687 -51.081523	X	X	
<i>A. minuano</i>	6M9	Tavares	-31.291687 -51.081523	X	X	
<i>A. minuano</i>	6M10	Tavares	-31.291687 -51.081523	X	X	X
<i>A. minuano</i>	6M11	Tavares	-31.291687 -51.081523	X	X	
<i>A. minuano</i>	6M12	Tavares	-31.291687 -51.081523	X	X	
<i>A. minuano</i>	6M13	Tavares	-31.291687 -51.081523	X	X	
<i>A. minuano</i>	6M14	Tavares	-31.291687 -51.081523	X	X	
<i>A. minuano</i>	6M15	Tavares	-31.291687 -51.081523	X	X	
<i>A. minuano</i>	6M16	Tavares	-31.291687 -51.081523	X	X	X
<i>A. minuano</i>	6M17	Tavares	-31.291687 -51.081523		X	
<i>A. minuano</i>	6M18	Tavares	-31.291687 -51.081523	X	X	
<i>A. minuano</i>	6M19	Tavares	-31.291687 -51.081523	X	X	X
<i>A. minuano</i>	6M20	Tavares	-31.291687 -51.081523		X	
<i>A. minuano</i>	7M1	Tavares - Talha Mar	-31.240750 -51.004880	X		X
<i>A. minuano</i>	7M2	Tavares - Talha Mar	-31.240750 -51.004880	X		
<i>A. minuano</i>	7M3	Tavares - Talha Mar	-31.240750 -51.004880	X	X	X

<i>A. minuano</i>	7M4	Tavares - Talha Mar	-31.240750 -51.004880	X	X	X
<i>A. minuano</i>	7M5	Tavares - Talha Mar	-31.240750 -51.004880	X		X
<i>A. minuano</i>	7M6	Tavares - Talha Mar	-31.240750 -51.004880	X		X
<i>A. minuano</i>	7M7	Tavares - Talha Mar	-31.240750 -51.004880	X	X	
<i>A. minuano</i>	7M8	Tavares - Talha Mar	-31.240750 -51.004880			X
<i>A. minuano</i>	7M9	Tavares - Talha Mar	-31.240750 -51.004880	X		X
<i>A. minuano</i>	7M10	Tavares - Talha Mar	-31.240750 -51.004880	X	X	X
<i>A. minuano</i>	7M11	Tavares - Talha Mar	-31.240750 -51.004880	X	X	X
<i>A. minuano</i>	7M12	Tavares - Talha Mar	-31.240750 -51.004880			
<i>A. minuano</i>	7M13	Tavares - Talha Mar	-31.240750 -51.004880	X		X
<i>A. minuano</i>	7M14	Tavares - Talha Mar	-31.240750 -51.004880	X	X	X
<i>A. minuano</i>	7M15	Tavares - Talha Mar	-31.240750 -51.004880	X	X	X
<i>A. minuano</i>	7M16	Tavares - Talha Mar	-31.240750 -51.004880	X		X
<i>A. minuano</i>	7M17	Tavares - Talha Mar	-31.240750 -51.004880	X	X	
<i>A. minuano</i>	7M18	Tavares - Talha Mar	-31.240750 -51.004880	X	X	X
<i>A. minuano</i>	7M19	Tavares - Talha Mar	-31.240750 -51.004880	X	X	X
<i>A. minuano</i>	7M20	Tavares - Talha Mar	-31.240750 -51.004880	X	X	

1226 The initials RG mean Rio Grande and SJN means São José do Norte.

1227







1237  
1238  
1239  
1240  
1241  
1242  
1243  
1244  
1245  
1246  
1247  
1248  
1249  
1250  
1251  
1252  
1253  
1254  
1255  
1256  
1257  
1258  
1259  
1260  
1261  
1262  
1263  
1264  
1265  
1266  
1267  
1268  
1269  
1270

## **CAPÍTULO 2**

Artigo a ser submetido na revista “Aquaculture Research”

1271 **Dimethylsulfoxide, glycerol and methylglycol in the**  
1272 **sperm cryopreservation of annual fish *Austrolebias minuano* (Cyprinodontiformes:**  
1273 **Rivulidae)**  
1274 **Sperm freezing of *Austrolebias minuano***  
1275  
1276 Murilo de Oliveira Fernandes<sup>1,2</sup> (<https://orcid.org/0000-0003-2030-4119>), Daiana Kaster Garcez<sup>1,2</sup>  
1277 (<https://orcid.org/0000-0003-4526-9647>), Izani Bonel Acosta<sup>2,3</sup>, Stela Mari Meneguello<sup>2,3</sup>, Carine  
1278 Dahl Corcini<sup>2,3</sup> (<https://orcid.org/0000-0001-5683-7801>), Lizandra Jaqueline Robe<sup>1,4</sup>  
1279 (<https://orcid.org/0000-0001-8506-9143>), Antonio Sergio Varela Junior<sup>2,3</sup> ([https://orcid.org/0000-](https://orcid.org/0000-0003-4901-5118)  
1280 [0003-4901-5118](https://orcid.org/0003-4901-5118))

1281  
1282 <sup>1</sup>Programa de Pós-Graduação em Biologia de Ambientes Aquáticos Continentais  
1283 (PPGBAC), Universidade Federal do Rio Grande (FURG), Rio Grande 96203-000, Rio Grande  
1284 do Sul, Brazil.

1285 <sup>2</sup>Reprodução Animal Comparada, Instituto de Ciências Biológicas, Universidade Federal do Rio  
1286 Grande (FURG), Rio Grande, Rio Grande do Sul, Brazil.

1287 <sup>3</sup>Centro de Pesquisa e Educação em Reprodução Animal, Faculdade de Veterinária, Universidade  
1288 Federal de Pelotas (UFPeL), Pelotas, Brazil.

1289 <sup>4</sup>Departamento de Ecologia e Evolução (DEE), Centro de Ciências Naturais e Exatas (CCNE),  
1290 Universidade Federal de Santa Maria – UFSM, Santa Maria, Brazil.

1291  
1292 \* Corresponding author: murilo\_fernand@hotmail.com (MOF)

1293 All authors contributed equally to this work.

1294 Membership of the Fundação Grupo Boticário de Proteção à Natureza is provided in the  
1295 Acknowledgments.

1296 **ABSTRACT**

1297 *Austrolebias minuano* is an annual Brazilian fish threatened due to loss and degradation of its  
1298 habitat. Therefore, the use of techniques, such as cryopreservation, allow the storage of at least  
1299 part of its genetic heritage. The objective of this study was to evaluate the effects of different  
1300 cryoprotectants (dimethylsulfoxide, glycerol and methyl glycol) in different concentrations on the  
1301 fish sperm quality parameters of *Austrolebias minuano*. Male sperm was used for evaluations of  
1302 cell kinetic parameters and flow cytometry. In this study, the best results regarding the parameters  
1303 of sperm kinetics were presented in cryopreserved samples with 7.5% methyl glycol. Instead,  
1304 dimethylsulfoxide at its concentration of 7.5% and glycerol at concentrations of 10, 12.5 and 15%  
1305 were the least effective treatments for all parameters evaluated for spermatic kinetics. Likewise,  
1306 for flow cytometry, the concentration of 7.5% methyl glycol was efficient and dimethylsulfoxide  
1307 was less efficient in the concentration of 12.5% in relation to the several parameters evaluated.  
1308 Therefore, we concluded that for the preservation of sperm quality in *A. Minuano*, the use of  
1309 cryoprotectants, specially methyl glycol, is effective. However, it was found that there is a high  
1310 sensitivity of these spermatozoa to glycerol; which is not recommended for preservation purposes.

1311

1312 **KEYWORDS**

1313 cryoprotectants, extinction, killifish, preservation

1314

1315

1316

1317

1318

1319

1320

1321 **1 INTRODUCTION**

1322 In recent decades, human action has devastated more natural areas than all of humanity in thousands  
1323 of years (Koneswaran & Nierenberg, 2008). The consequences of habitat loss and extinction of certain  
1324 populations or species may affect an entire community and severely impair their diversity (Humphries  
1325 & Winemiller, 2009). This effect is particularly severe in continental aquatic environments where  
1326 small species are more vulnerable to extinction (Olden, Hogan, & Zanden, 2007).

1327 Composing a large part of the aquatic biodiversity, annual fish belonging to the Rivulidae  
1328 family, representing 30% of the ichthyofauna threatened in Brazil (ICMbio, 2012). The threat faced  
1329 by the group is mainly due to the loss and fragmentation of temporary continental aquatic  
1330 environments, which has been particularly drastic (Fontana, Bencke, & Reis, 2003). The fact that they  
1331 are small and isolated populations makes the group especially susceptible to high rates of genetic drift,  
1332 accelerating evolutionary rates, and promoting the occurrence of allopatric speciation events  
1333 (Beheregaray, Attard, Brauer, & Hammer, 2016). This further intensifies the threat status of the  
1334 different groups and evidences the need for immediate conservation of the genetic heritage of the  
1335 different lineages.

1336 *Austrolebias minuano* (Costa & Cheffe, 2001) (Fig. 1) is one of the species of annual fishes  
1337 threatened of extinction in Brazil (Rosa & Lima, 2008). This species belongs to the group *A. adloffii*,  
1338 distinguished by its body size and color patterns. Within the distribution perspectives of the different  
1339 species of annual fish, *A. minuano* presents a relatively wide distribution, occurring in ponds of the  
1340 Patos Mirim lagoon system (Costa, 2006). Its opportunistic food habit makes it particularly important  
1341 for food chains and the balance of wetland ecosystems (Volcan, Fonseca, & Robaldo, 2011).

1342 *Ex situ* conservation strategies allow the creation of germplasm banks, a technique that ensures  
1343 the preservation of at least part of the genetic heritage of endangered species (Figuroa et al., 2015;  
1344 Silva et al., 2016). The availability of genetic resources, such as spermatozoa and cryopreserved  
1345 oocytes, allows the recovery of these species, avoiding the loss of genetic diversity, and enabling the

1346 reintroduction into the natural environment. Hence, this technique provides a means to recover and  
1347 preserve endangered species through the conservation of biodiversity (Cabrita et al., 2010; Martínez-  
1348 Páramo et al., 2009).

1349



1350

1351 **Fig. 1.** Species of *Austrolebias minuano*, withdrawal from the locality type Ilha do Leonídeo, state of Rio Grande do  
1352 Sul - Brazil. The male of the species (A) is characterized by pairs of dark lines in its body and the female (B) for its  
1353 smooth lines in the body.

1354

1355 However, as the biochemical composition of sperm varies widely, it is necessary to develop a  
1356 cryopreservation protocol for every species (Carolsfeld, Godinho, Zaniboni Filho, & Harvey, 2003;  
1357 Shin, Lein, Patten, & Ruhnke, 1988). To establish an efficient and practical protocol for sperm  
1358 cryopreservation, factors such as cryoprotectant type and concentration, conditions for freezing and  
1359 thawing of sperm, diluents and time of each process should be standardized. According to Viveiros et  
1360 al., (2012) the intracellular cryoprotectants most used for cryopreservation of fish are dimethyl

1361 sulfoxide (DMSO), glycerol and methyl glycol. In fact, cryoprotectants of the alcohol class have been  
1362 widely used in sperm freezing in freshwater fish species: Pirapitinga (*Brycon nattereri*) (Oliveira,  
1363 Viveiros, Maria, Freitas, & Izaú, 2007), Tambaqui (*Colossoma macropomum*) (Menezes, Queiroz,  
1364 Doria, & Menezes Jr, 2008; Varela Junior et al., 2012), Curimba (*Prochilodus lineatus*) (Viveiros &  
1365 Godinho, 2009).

1366         Dimethyl sulfoxide has confirmed significant results in the semen freezing of fish because it is  
1367 a highly soluble element in the aqueous medium that easily penetrates the plasma membrane of the  
1368 cell, binding to the free hydroxyl responsible for the formation of reactive oxygen species (MacGregor,  
1369 1967). Another alcohol widely used in programs for the preservation of male gametes of several  
1370 species is glycerol (Alvarenga, Papa, Landim-Alvarenga, & Medeiros, 2005). However, this  
1371 component has shown some disadvantages when compared to other cryoprotectants, especially on the  
1372 integrity of cellular structures, due to its high molecular weight, high viscosity and high level of  
1373 impermeability (Hammerstedt, Graham, & Carolina, 1992). Finally, different studies indicate that  
1374 methyl glycol is ideal for the preservation of fish spermatozoa as *Brycon insignis* (Viveiros et al.,  
1375 2011), *B. orbignyanus* (Maria, Viveiros, Freitas, & Oliveira, 2006), *Piaractus brachypomus*  
1376 (Nascimento, Maria, Pessoa, Carvalho, & Viveiros, 2010), *Piaractus mesopotamicus* (Órfão, L.H.,  
1377 Viveiros, A.T.M., Silva, F.P.C., Maria, 2008), *P. lineatus* (Viveiros, Maria, Orfao, Carvalho, & Nunes,  
1378 2008) and *Colossoma macropomun* (Carneiro, Azevedo, Santos, & Maria, 2012).

1379         In this context, the objective of the present study was to standardize the first cryopreservation  
1380 protocol for an annual fish species of the Rivulidae family.

1381

## 1382 **2 MATERIALS AND METHODS**

### 1383 **2.1 Animals and semen collection**

1384 Adult males of *Austrolebias minuano* were collected with the aid of immersion nets in the type locality  
1385 of the species (Costa, 2006), located on Ilha do Leonídeo (52°22'79.49"S and 32°05'04.78"W), in Rio

1386 Grande, RS, southern Brazil. The animals were euthanized by a section of the spinal cord, a method  
1387 accepted with restrictions for laboratory fish, according to the Federal Council of Veterinary Medicine  
1388 of Brazil (Resolution No. 1000 of 05/2012), when the use of anesthetics may affect the results of the  
1389 analyzes.

1390 In this study, with the objective of increasing the volume of semen per sample, a pool of gonads  
1391 of three males was carried out for each of the 15 samples, totaling 45 animals. After collection, the  
1392 semen was diluted in Beltsville Thawing Solution (BTS), pH 7.2 and osmolarity 380 mOsm / kg in a  
1393 ratio of 1: 9 (v / v). For the estimation of motility, 1  $\mu$ l of semen diluted in 4  $\mu$ l of water (from the  
1394 place where they were collected) and analyzed by means of sperm analysis aided by Computer  
1395 Assisted Semen Analysis (CASA) (Dziewulska, Rzemieniecki, Czerniawski, & Domagała, 2011). All  
1396 samples used in the experiment did not have total motility prior to activation. On the other hand, after  
1397 10 seconds of the activation, all had motility superior to 80%, without contamination by urine or feces.

1398

### 1399 **2.1.2 Experimental design**

1400 The freezing counted on 15 pools distributed in 15 treatments using the cryoprotectants DMSO,  
1401 Methyl glycol and Glycerol in the concentrations of 5; 7.5; 10; 12.5 and 15%. All treatments were  
1402 prepared in BTS® (Beltsville Thawing Solution) diluent (Pursel & Johnson, 1975) with pH of 7.2  
1403 and osmolarity of 380 mOsm. Each treatment was placed in 250  $\mu$ L containers, sealed with  
1404 polyvinyl alcohol, placed in metal racks and kept cooled at 5 ° C for 20 minutes. After the exposure  
1405 time between sperm and treatment, the racks were transferred to the canister of the dry shipper  
1406 nitrogen vapor boiler (Taylor Wharton, model CP 300), where they remained for at least 12 hours.  
1407 Then, they were transferred to the liquid nitrogen canister (MVE, model CP-34), where they  
1408 remained for 45 days until the moment of thawing for analysis of the samples.

1409

### 1410 **2.2 Analysis of spermatic kinetics**

1411 The spermatozoa were activated with 1  $\mu\text{L}$  of sample and 4  $\mu\text{L}$  of puddle water, filtered in  
1412 Millipore (Millex® JBR610021 / 0,22  $\mu\text{m}$ ) with the parameters recorded by CASA. Ten fields  
1413 were captured, having at least 1,000 cells at the end. The parameters evaluated were: Total Motility  
1414 (MT-%), Progressive Motility (MP%), Average Distance Traveled (DAP- $\mu\text{m}$ ), Curvilinear  
1415 Distance (DCL- $\mu\text{m}$ ), VAP-%), Rectilinearity (STR-%), Linearity (LIN-%), Oscillation (WOB),  
1416 Head Lateral Displacement (ALH- $\mu\text{m}$ ) and Cross-Flagellar Beating Frequency (BCF-Hz). The  
1417 motile period was evaluated from the moment of activation until the stop of the progressive  
1418 movement of spermatozoa (Varela Junior et al., 2015).

1419

## 1420 **2.3 Flow cytometry analyses**

1421 All evaluations were performed in the Attune Acoustic Focusing® version 2.1 (Life  
1422 Technologies), equipped with a blue laser (Argon 488 nm) and violet laser (UV 405 nm), is the  
1423 last used to detect all the evaluations (450/40, VL -1). Sperm cell populations were stained with  
1424 Hoechst 33342 at 16.2 mM concentration, except for DNA fragmentation (Martinez-Alborcia et  
1425 al., 2012). Non-sperm events were discarded by FSC x SSC and Hoechst 33342 negative (debris)  
1426 scatter plots. For reading all parameters, cells stained with fluorophores were added in calcium-  
1427 free PBS (80g NaCl, 11.5 g KCl, 24 g Na<sub>2</sub> HPO<sub>4</sub>, 2 g KH<sub>2</sub> PO<sub>4</sub> in 1L deionized water) using  
1428 a total of 10,000 sperm per analysis.

1429

### 1430 **2.3.1 Mitochondrial Functionality**

1431 To assess mitochondrial functionality, 10  $\mu\text{L}$  of thawed sample was incubated with 3.1  $\mu\text{M}$   
1432 Rhodamine 123 (green fluorescence) and 7.5  $\mu\text{M}$  IP for 10 min. Sperm cells were classified as  
1433 having either high functionality (high fluorescence by Rhodamine accumulation) or low  
1434 functionality (low fluorescence, low Rhodamine accumulation) after they had been analyzed for  
1435 the presence of intact spermatozoa (IP negative) (Liu et al., 2015). The mitochondrial functionality



1436 rate was calculated by the following formula: [(number of spermatozoa with high mitochondrial  
1437 membrane potential) / (high sperm count potential of mitochondrial membrane + spermatozoa with  
1438 low mitochondrial membrane potential)] × 100 (Alves et al., 2016).

1439

### 1440 **2.3.2 Membrane functionality and Cellular disruption**

1441 The membrane functionality was verified through the fluorophores Sybr14 and propidium iodide  
1442 (PI) (Minitübe, Tiefenbach, Germany). The aliquots of thawed semen were mixed with the  
1443 fluorescent probes containing 0.25 µM of Sybr14 and 7.5 µM IP (as instructed by the manufacturer  
1444 - Minitube) and incubated for 5 minutes. Functional membrane spermatozoa (Sybr + / IP-) were  
1445 classified as undamaged, while the others (Sybr + / IP +, Sybr- / IP +, Sybr- / IP-) were classified  
1446 as lesions (Figueroa et al., 2015). To verify the percentage of cellular rupture, the cells that were  
1447 IP – were classified as non-ruptured whereas those that were IP + were regarded as ruptured.

1448

### 1449 **2.3.3 Fluidity membrane**

1450 The membrane fluidity check was performed using 2.7 µM of hydrophobic merocyanine dye 540  
1451 (M540) and 0.1 µM of YO PRO-1 (Invitrogen-Eugene, OR, USA) in 10 µl of thawed sample, for  
1452 5 min. High fluidity (high concentration of M540) and low fluidity (low concentration of M540)  
1453 cells were evaluated only for intact spermatozoa (YO-PRO negative) (Fernández-Gago,  
1454 Domínguez, & Martínez-Pastor, 2013). The membrane flow rate was calculated by the number of  
1455 spermatozoa with high fluidity/number of spermatozoa with low fluidity + spermatozoa with high  
1456 fluidity \*100.

1457

### 1458 **2.3.4 DNA fragmentation index**

1459 DNA integrity was assessed by the chromatin structure assay (SCSA). To verify this parameter,  
1460 10 µL of thawed spermatozoa were added to 5 µL of TNE (0.01 M Tris-HCl, 0.15 M NaCl, 0.001

1461 M EDTA, pH 7.2) and 10  $\mu$ L of 1X Triton (Triton X-100, 1% (v / v) at 30-second intervals. The  
1462 acridine orange dye was added and incubated for 30 seconds, not exceeding the time of 2 min for  
1463 the reading. Spermatozoa were classified as integers (green) or fragmented (orange/red) (Jenkins,  
1464 Draugelis-Dale, Pinkney, Iwanowicz, & Blazer, 2015). The rate of DNA fragmentation was  
1465 calculated by the number of spermatozoa with fragmented DNA / sperm count intact DNA +  
1466 spermatozoa with fragmented DNA \*100.

1467

### 1468 **2.3.5 Concentration of reactive oxygen species (ROS)**

1469 The concentration of ROS in sperm cells was performed by 1.0  $\mu$ M of the fluorophore 2'7'  
1470 dichlorofluorescein diacetate (H2DCFDA) (emits green fluorescence when oxidized) and IP 7.5  
1471  $\mu$ M. The median intensity of green fluorescence was used only for live sperm (IP-) (Domínguez-  
1472 Rebolledo et al., 2011).

1473

### 1474 **2.3.6 Lipid peroxidation (LPO)**

1475 Lipid peroxidation of spermatozoa was evaluated shortly after thawing. The final concentration of 1  
1476  $\mu$ M Bodipy C11 (Hagedorn, McCarthy, Carter, & Meyers, 2012) in 10  $\mu$ L of sample, and these were  
1477 incubated for 2 hours at room temperature (20 ° C), and only live spermatozoa were analyzed. The  
1478 lipid peroxidation rate was calculated by the median intensity of red fluorescence (non-peroxidized  
1479 lipid) / median green fluorescence intensity + median red fluorescence intensity \*100.

1480

## 1481 **2.4 Statistical Analyzes**

1482 The variables were evaluated for normality by the Shapiro-Wilk test, followed by analysis of  
1483 variance (ANOVA) and Tukey's test. The different cryoprotectants and their concentrations were  
1484 considered independent variables and all other variables such as total motility, progressive  
1485 motility, DAP, DCL, DSL, VAP, STR, LIN, WOB, ALH, BCF, mitochondrial functionality,

1486 membrane functionality, cell disruption, membrane fluidity, DNA fragmentation, ROS e LPO  
 1487 were considered dependent variables. All analyzes were performed in Statistix® 9.0 software  
 1488 (Statistix, 2008). Values of P <0.05 were considered to indicate significant differences.

1489

### 1490 3 RESULTS

1491 The best results regarding the parameters of sperm kinetics were presented in cryopreserved samples  
 1492 with methyl glycol (MG) at a concentration of 7.5% (P <0.05), with a progressive motile value of 9.62  
 1493 ± 0.92 (Table 1). On the other hand, DMSO at its concentration of 7.5% and GLY at concentrations  
 1494 of 10, 12.5 and 15% were the least effective treatments for all parameters evaluated for sperm kinetics  
 1495 (Table 1).

1496

1497 **Table - 1.** Analyses of total motility, progressive motility, mean distance traveled, curvilinear distance, rectilinear  
 1498 distance, lateral head displacement and frequency of cross flagellar beating of *Austrolebias minuano* (Costa & Cheffe,  
 1499 2001), with dimethylsulfoxide, glycerol and methyl glycol alcohols at different concentrations (mean ± standard error)

<b>Spermatic Kinetics</b>							
<b>Treatments (%)</b>	<b>MT</b>	<b>MP</b>	<b>DAP</b>	<b>DCL</b>	<b>DSL</b>	<b>ALH</b>	<b>BCF</b>
<b>DMSO 5</b>	8.41±0.9 <sup>bc</sup> def	4.64±0. 7 <sup>cd</sup>	5.69±0.7 <sup>e</sup> fg	7.46±0.9 de	4.41±0.6 ef	0.88±0.1 <sup>ab</sup> cde	10.71±1.1 def
<b>DMSO 7.5</b>	7.22±0.9 <sup>de</sup> f	3.22±0. 7 <sup>d</sup>	3.96±0.6 <sup>g</sup> hij	5.38±0.7 <sup>e</sup> fg	3.30±0.5 fgh	0.69±0.1 <sup>cd</sup> efg	8.32±1.1 <sup>fg</sup>
<b>DMSO 10</b>	11.13±0.9 ab	7.27±0. 8 <sup>b</sup>	7.81±0.6 <sup>b</sup> cd	10.86±0. 9 <sup>bc</sup>	6.20±0.5 bc	0.81±0.1 <sup>bc</sup> def	13.61±1.1 bcd
<b>DMSO 12.5</b>	7.36±0.6 <sup>bc</sup> def	3.55±0. 4 <sup>d</sup>	5.20±0.5 <sup>f</sup> gh	7.44±0.7 de	3.66±0.3 fg	0.65±0.1 <sup>de</sup> fg	10.83±1.1 def
<b>DMSO 15</b>	9.94±0.9 <sup>ab</sup> cd	5.77±0. 8 <sup>bc</sup>	6.05±0.6 <sup>d</sup> ef	8.81±0.9 <sup>c</sup> d	4.48±0.4 def	0.85±0.1 <sup>ab</sup> cdef	10.06±1.0 ef
<b>GLY 5</b>	5.86±0.9 <sup>f</sup>	3.48±0. 7 <sup>d</sup>	4.91±0.6 <sup>f</sup> ghi	6.83±0.8 def	3.80±0.4 fg	0.63±0.1 <sup>de</sup> fg	11.03±1.3 cdef
<b>GLY 7.5</b>	8.73±0.9 <sup>bc</sup> de	4.74±0. 7 <sup>cd</sup>	7.20±0.9 <sup>c</sup> de	10.24±1. 1 <sup>bc</sup>	5.89±0.8 bcd	1.00±0.1 <sup>ab</sup>	12.12±1.1 bcde
<b>GLY 10</b>	5.97±0.8 <sup>ef</sup>	2.80±0. 7 <sup>d</sup>	3.38±0.4 <sup>ij</sup>	4.54±0.5 <sup>f</sup> g	2.61±0.3 gh	0.61±0.1 <sup>ef</sup> g	8.37±1.1 <sup>fg</sup>
<b>GLY 12.5</b>	6.20±0.7 <sup>de</sup> f	3.20±0. 5 <sup>d</sup>	3.51±0.4 <sup>h</sup> ij	4.87±0.6 <sup>f</sup> g	2.63±0.3 gh	0.66±0.1 <sup>de</sup> f	6.43±0.9 <sup>g</sup>
<b>GLY 15</b>	6.46±0.8 <sup>de</sup> f	2.69±0. 5 <sup>d</sup>	2.71±0.4 <sup>j</sup>	4.01±0.6 g	2.01±0.3 h	0.60±0.1 <sup>fg</sup>	6.37±0.9 <sup>g</sup>

<b>MG 5</b>	7.97±0.8 <sup>cd</sup> ef	4.23±0. 7 <sup>cd</sup>	4.41±0.6 <sup>f</sup> ghij	5.88±0.8 <sup>e</sup> fg	3.69±0.5 fg	0.53±0.1 <sup>g</sup>	8.56±1.1 <sup>fg</sup>
<b>MG 7.5</b>	14.45±1.8 a	9.62±0. 9 <sup>a</sup>	10.28±0. 7 <sup>a</sup>	14.63±1. 0 <sup>a</sup>	7.84±0.5 a	1.11±0.1 <sup>a</sup>	16.86±1.1 a
<b>MG 10</b>	11.42±0.8 ab	7.43±0. 7 <sup>b</sup>	9.55±0.7 <sup>a</sup> b	14.96±1. 2 <sup>a</sup>	6.96±0.5 ab	1.05±0.1 <sup>ab</sup>	17.10±1.2 a
<b>MG 12.5</b>	11.24±0.9 ab	6.85±0. 7 <sup>b</sup>	7.14±0.5 <sup>c</sup> de	10.58±0. 8 <sup>bc</sup>	5.31±0.4 cde	0.90±0.1 <sup>ab</sup> cd	14.06±1.1 abc
<b>MG 15</b>	10.91±0.9 abcd	7.36±0. 8 <sup>b</sup>	8.04±0.6 <sup>b</sup> c	11.58±0. 9 <sup>b</sup>	5.99±0.4 bc	0.94±0.1 <sup>ab</sup> c	14.96±1.1 ab

1500 Total motility (MT), progressive motility (MP), mean distance traveled (DAP), curvilinear distance (DCL), rectilinear  
1501 distance (DSL), lateral head displacement (ALH), frequency of cross flagellar beating (BCF), dimethylsulfoxide (DMSO),  
1502 glycerol (GLY) and methyl glycol (MG). Different letters indicate differences ( $P<0.05$ )

1503  
1504 **Continued Table - 1.** Analyses of average path velocity, curvilinear velocity, straightness, linearity and oscillation of  
1505 *Austrolebias minuano* (Costa & Cheffe, 2001), with dimethylsulfoxide, glycerol and methyl glycol alcohols at  
1506 different concentrations (mean ± standard error)

<b>Spermatic Kinetics</b>					
<b>Treatments (%)</b>	<b>VAP</b>	<b>VCL</b>	<b>STR</b>	<b>LIN</b>	<b>WOB</b>
<b>DMSO 5</b>	13.34±1.6 <sup>def</sup>	17.72±2.1 <sup>cd</sup>	0.29±0.0 <sup>cde</sup>	0.23±0.0 <sup>cde</sup>	0.29±0.0 <sup>de</sup>
<b>DMSO 7.5</b>	9.35±1.3 <sup>fgh</sup>	12.89±1.7 <sup>def</sup>	0.23±0.0 <sup>ef</sup>	0.17±0.0 <sup>ef</sup>	0.21±0.0 <sup>fg</sup>
<b>DMSO 10</b>	17.18±1.5 <sup>bcd</sup>	23.77±2.1 <sup>b</sup>	0.41±0.0 <sup>ab</sup>	0.30±0.0 <sup>ab</sup>	0.38±0.0 <sup>abc</sup>
<b>DMSO 12.5</b>	11.57±1.2 <sup>efg</sup>	16.66±1.7 <sup>cde</sup>	0.28±0.0 <sup>de</sup>	0.20±0.0 <sup>de</sup>	0.28±0.0 <sup>def</sup>
<b>DMSO 15</b>	13.86±1.3 <sup>cde</sup>	20.35±2.1 <sup>bc</sup>	0.32±0.0 <sup>cd</sup>	0.23±0.0 <sup>cde</sup>	0.31±0.0 <sup>cd</sup>
<b>GLY 5</b>	10.78±1.3 <sup>efg</sup>	15.10±1.8 <sup>cdef</sup>	0.27±0.0 <sup>de</sup>	0.20±0.0 <sup>de</sup>	0.25±0.0 <sup>def</sup>
<b>GLY 7.5</b>	16.89±2.5 <sup>bcd</sup>	23.83±2.99 <sup>d</sup>	0.37±0.0 <sup>bc</sup>	0.26±0.0 <sup>bcd</sup>	0.32±0.0 <sup>bcd</sup>
<b>GLY 10</b>	8.31±1.1 <sup>gh</sup>	11.26±1.4 <sup>ef</sup>	0.23±0.0 <sup>ef</sup>	0.18±0.0 <sup>ef</sup>	0.22±0.0 <sup>efg</sup>
<b>GLY 12.5</b>	8.45±1.1 <sup>gh</sup>	11.73±1.6 <sup>ef</sup>	0.22±0.0 <sup>ef</sup>	0.17±0.0 <sup>ef</sup>	0.22±0.0 <sup>efg</sup>
<b>GLY 15</b>	6.53±0.9 <sup>h</sup>	9.64±1.5 <sup>f</sup>	0.17±0.0 <sup>f</sup>	0.12±0.0 <sup>f</sup>	0.16±0.0 <sup>g</sup>
<b>MG 5</b>	9.86±1.2 <sup>efgh</sup>	13.12±1.7 <sup>def</sup>	0.27±0.0 <sup>de</sup>	0.21±0.0 <sup>de</sup>	0.25±0.0 <sup>def</sup>
<b>MG 7.5</b>	22.97±1.6 <sup>a</sup>	32.55±2.2 <sup>a</sup>	0.47±0.0 <sup>a</sup>	0.34±0.0 <sup>a</sup>	0.44±0.0 <sup>a</sup>
<b>MG 10</b>	20.79±1.6 <sup>ab</sup>	32.56±2.6 <sup>a</sup>	0.43±0.0 <sup>ab</sup>	0.29±0.0 <sup>abc</sup>	0.39±0.0 <sup>ab</sup>
<b>MG 12.5</b>	15.81±1.2 <sup>cd</sup>	23.50±1.9 <sup>b</sup>	0.42±0.0 <sup>ab</sup>	0.30±0.0 <sup>ab</sup>	0.39±0.0 <sup>ab</sup>
<b>MG 15</b>	17.86±1.3 <sup>bc</sup>	25.74±2.1 <sup>b</sup>	0.43±0.0 <sup>ab</sup>	0.33±0.0 <sup>a</sup>	0.43±0.0 <sup>a</sup>

1507 Path velocity (VAP), curvilinear velocity (VCL), straightness (STR), linearity (LIN), oscillation (WOB),  
1508 dimethylsulfoxide (DMSO), glycerol (GLY) and methyl glycol (MG). Different letters indicate differences ( $P<0.05$ )

1509

1510 Likewise, for flow cytometry parameters, 7.5% concentration of MG was efficient in relation  
 1511 to mitochondrial functionality (MIT), membrane functionality (MFU), cell integrity (CD), DNA  
 1512 integrity (DNA) and production of reactive oxygen species (ROS) (Table 2). Among the treatments,  
 1513 DMSO 12.5% was the least effective for most of the analyzed parameters (Table 2).

1514

1515 **Table - 2.** Analyses of mitochondrial functionality, membrane functionality, cellular disruption, fluidity membrane,  
 1516 DNA fragmentation index, concentration of reactive oxygen species and lipid peroxidation of *Austrolebias minuano*  
 1517 (Costa & Cheffe, 2001), with dimethylsulfoxide, glycerol and methyl glycol alcohols at different concentrations (mean  
 1518  $\pm$  standard error)

Flow cytometry							
Treatments (%)	MIT	MFU	CD	MFL	DNA	ROS	LPO
DMSO 5	84.71 $\pm$ 2.1 <sup>a</sup> bc	72.92 $\pm$ 2.1 <sup>d</sup> ef	29.95 $\pm$ 3.1 <sup>a</sup> bc	45.64 $\pm$ 2. 8 <sup>bc</sup>	4.62 $\pm$ 0.1 bcd	4561.0 $\pm$ 747. 91 <sup>def</sup>	15.17 $\pm$ 1.4 abc
DMSO 7.5	81.66 $\pm$ 2.5 <sup>c</sup>	81.26 $\pm$ 1.1 <sup>a</sup> bc	31.08 $\pm$ 3.2 <sup>a</sup> b	48.10 $\pm$ 3. 9 <sup>bc</sup>	4.25 $\pm$ 0.1 de	5121.8 $\pm$ 569. 33 <sup>def</sup>	15.74 $\pm$ 1.0 ab
DMSO 10	87.93 $\pm$ 1.1 <sup>a</sup> b	76.46 $\pm$ 2.1 <sup>b</sup> cde	21.30 $\pm$ 1.0 <sup>f</sup>	34.11 $\pm$ 3. 2 <sup>d</sup>	4.32 $\pm$ 0.2 de	5351.3 $\pm$ 971. 40 <sup>def</sup>	13.70 $\pm$ 1.1 abcd
DMSO 12.5	88.46 $\pm$ 0.9 <sup>a</sup>	63.33 $\pm$ 3.9 <sup>g</sup>	23.58 $\pm$ 0.9 <sup>d</sup> ef	47.81 $\pm$ 2. 6 <sup>bc</sup>	4.98 $\pm$ 0.1 ab	11813 $\pm$ 3914 .6 <sup>ab</sup>	15.43 $\pm$ 1.4 ab
DMSO 15	86.13 $\pm$ 0.9 <sup>a</sup> bc	69.26 $\pm$ 3.4 <sup>fg</sup>	25.16 $\pm$ 1.0 <sup>c</sup> def	59.94 $\pm$ 3. 0 <sup>a</sup>	4.66 $\pm$ 0.1 bcd	6389.9 $\pm$ 924. 09 <sup>def</sup>	12.72 $\pm$ 1.2 bcde
GLY 5	84.60 $\pm$ 1.3 <sup>a</sup> bc	81.06 $\pm$ 1.1 <sup>a</sup> bc	21.73 $\pm$ 1.0 <sup>e</sup> f	42.00 $\pm$ 2. 7 <sup>cd</sup>	4.55 $\pm$ 0.0 bcd	5299.6 $\pm$ 916. 60 <sup>def</sup>	11.68 $\pm$ 1.2 cde
GLY 7.5	87.20 $\pm$ 1.3 <sup>a</sup> bc	77.53 $\pm$ 2.1 <sup>a</sup> bcd	23.45 $\pm$ 1.2 <sup>d</sup> ef	50.48 $\pm$ 3. 1 <sup>abc</sup>	4.41 $\pm$ 0.1 cde	11533 $\pm$ 1643 9 <sup>abc</sup>	17.03 $\pm$ 1.2 a
GLY 10	85.46 $\pm$ 1.5 <sup>a</sup> bc	70.60 $\pm$ 2.0 <sup>ef</sup>	26.19 $\pm$ 2.1 <sup>a</sup> bcdef	49.72 $\pm$ 3. 8 <sup>bc</sup>	4.05 $\pm$ 0.1 e	4832.3 $\pm$ 455. 99 <sup>def</sup>	13.52 $\pm$ 0.9 abcd
GLY 12.5	85.28 $\pm$ 1.6 <sup>a</sup> bc	80.50 $\pm$ 3.2 <sup>a</sup> bc	28.16 $\pm$ 2.4 <sup>a</sup> bcd	42.37 $\pm$ 3. 7 <sup>cd</sup>	5.42 $\pm$ 0.1 a	2539.8 $\pm$ 244. 75 <sup>ef</sup>	9.41 $\pm$ 1.2 <sup>e</sup>
GLY 15	82.40 $\pm$ 1.7 <sup>b</sup> c	83.46 $\pm$ 2.2 <sup>a</sup>	27.11 $\pm$ 1.9 <sup>a</sup> bcde	48.11 $\pm$ 3. 5 <sup>bc</sup>	4.22 $\pm$ 0.1 de	5252.7 $\pm$ 100 8.4 <sup>def</sup>	11.25 $\pm$ 1.2 de
MG 5	83.80 $\pm$ 3.1 <sup>a</sup> bc	80.00 $\pm$ 2.9 <sup>a</sup> bc	31.30 $\pm$ 2.9 <sup>a</sup>	52.33 $\pm$ 3, 9 <sup>ab</sup>	4.62 $\pm$ 0.1 bcd	7557.7 $\pm$ 114 4.3 <sup>bcde</sup>	13.88 $\pm$ 1.3 abcd
MG 7.5	84.06 $\pm$ 2.2 <sup>a</sup> bc	79.46 $\pm$ 1.1 <sup>a</sup> bcd	25.63 $\pm$ 1.9 <sup>b</sup> cdef	46.35 $\pm$ 3. 5 <sup>bc</sup>	3.96 $\pm$ 0.2 e	6694.5 $\pm$ 121 8.2 <sup>cdef</sup>	16.38 $\pm$ 1.2 a
MG 10	85.07 $\pm$ 2.4 <sup>a</sup> bc	79.21 $\pm$ 2.3 <sup>a</sup> bcd	23.12 $\pm$ 1.6 <sup>d</sup> ef	45.91 $\pm$ 3. 5 <sup>bc</sup>	4.39 $\pm$ 0.2 cde	3414.0 $\pm$ 308. 84 <sup>ef</sup>	13.60 $\pm$ 1.4 abcd
MG 12.5	82.26 $\pm$ 3.2 <sup>b</sup> c	82.60 $\pm$ 1.1 <sup>a</sup> b	22.64 $\pm$ 1.3 <sup>d</sup> ef	45.02 $\pm$ 3. 5 <sup>bc</sup>	4.82 $\pm$ 0.1 bc	9464.4 $\pm$ 160 5.1 <sup>abcd</sup>	16.89 $\pm$ 1.3 a
MG 15	83.06 $\pm$ 3.2 <sup>a</sup> bc	75.50 $\pm$ 3.1 <sup>c</sup> def	26.09 $\pm$ 1.8 <sup>a</sup> bcdef	44.44 $\pm$ 3. 5 <sup>bc</sup>	4.31 $\pm$ 0.1 de	13812 $\pm$ 4186 .8 <sup>a</sup>	14.52 $\pm$ 1.4 abcd

1519 Mitochondrial functionality (MIT), membrane functionality (MFU), cellular disruption (CD), fluidity membrane  
1520 (MFL), DNA fragmentation index (DNA), concentration of reactive oxygen species (ROS), lipid peroxidation (LPO),  
1521 dimethylsulfoxide (DMSO), glycerol (GLY) and methyl glycol (MG). Different letters indicate differences ( $P<0.05$ )  
1522

#### 1523 **4 DISCUSSION**

1524 This was the first study to test the protocol for sperm cryopreservation in annual fish, where the  
1525 class of internal cryoprotectants (penetrants) was tested. The treatments evaluated with the use of  
1526 methyl glycol proved to be efficient in almost all parameters related to sperm motility, a  
1527 fundamental property for the reproductive success of the species (Cabrita et al., 2010; Maria et al.,  
1528 2006). In fact, when compared to DMSO and GLY, the MG in its concentration of 7.5% obtained  
1529 the most efficient results regarding progressive motility, presenting values up to three times higher  
1530 than the other alcohols. In addition, 7.5% of the MG presented the best results of sperm kinetics,  
1531 showing twice as good as the other cryoprotectants in relation to distance (DAP) and velocity  
1532 (VAP). These results are congruent with those presented by Pereira et al. (2018) for *Suruvi*  
1533 *Steindachneridion scriptum*, where MG was more effective.

1534 However, the advantageous characteristics of MG were not restricted only to sperm  
1535 motility parameters, since the effectiveness of this cryoprotectant can be further confirmed in many  
1536 of the flow cytometric analyzes. In fact, the MG 7.5 treatment conferred low levels of DNA  
1537 fragmentation (DNA), showing that DNA integrity was maintained during freezing and after  
1538 thawing, and lower rates of lipid peroxidation. The number of reactive oxygen species (ROS) was  
1539 shown to be reduced in almost all evaluated treatments, which is important for the other  
1540 parameters, because the lower the number of ROS, the lower the chances of damage to the  
1541 membrane, and consequently the better the membrane fluidity. According to Silva et al. (2016),  
1542 this also improves mitochondrial functionality. In this sense, mitochondrial and membrane  
1543 functionality, as well as rates of cell disruption and membrane fluidity, are also among the  
1544 parameters for which several treatments performed similarly.

1545           The effect of MG on fish was first tested in the cryopreservation of semen in Piracanjuba  
1546 (Maria et al., 2006), where it was more effective. The methyl glycol cryoprotectant is derived from  
1547 methanol (CH<sub>3</sub>OH) and ethylene oxide (CH<sub>2</sub>OCH<sub>2</sub>) (Viveiros, Orfão, Maria, & Allaman, 2009b),  
1548 being considered a non-toxic alcohol (Takagi, Otoi, & Suzuki, 1993), which may result in more  
1549 desirable discoveries when compared to other alcohols, such as DMSO (Viveiros, Oliveira, Maria,  
1550 Orfão, & Souza, 2009a). In this sense, Viveiros et al., (2011) they compared DMSO and methyl  
1551 glycol as cryoprotectants, at a concentration of 10%, for *Brycon insignis* and found better sperm  
1552 motility results with the use of methyl glycol (77% to 82%) compared to DMSO (23% a 46%). In  
1553 a study with *Brycon nattereri*, Viveiros et al. (2012) also show that cryopreserved semen with  
1554 methyl glycol combined with BTS® has high quality. Oliveira et al., (2007), in one of his  
1555 experiments using four different freezing media, observed the highest sperm motility (66%) in  
1556 freezing in BTS® + methyl glycol. BTS® has 80% glucose in its composition and has been  
1557 increasingly used in cryopreservation of fish semen. In piracanjuba, sperm motility was observed  
1558 above 60% in frozen semen in BTS® + methyl glycol (Maria et al., 2006).

1559           DMSO is the cryoprotectant most commonly used in freshwater fish in concentrations of  
1560 5 - 15% (Viveiros & Godinho, 2009), being considered as one of the best cryoprotectants due to  
1561 its efflux capacity and cellular inflow, in a process that is much less temperature dependent than  
1562 other cryoprotectants (Suzuki, Komada, Takai, Ariei, & Kozima, 1995). In the present study,  
1563 DMSO in its intermediate concentration of 10%, showed a better result in almost all the kinetic  
1564 parameters, presenting a reduction of performance in smaller concentrations. However, the toxic  
1565 effects of DMSO on fish, when used in high concentrations or when the exposure time is extended,  
1566 is still little studied (Gwo, Jamieson, & Leung, 2009; Robles, Cabrita, Real, Álvarez, & Herráez,  
1567 2003). On the other hand, there are studies that consider, like ours, that DMSO is not the best  
1568 cryoprotectant for fish semen freezing (Menezes et al., 2008).

1569 Finally, glycerol presented the lowest values for all kinetic parameters evaluated in the  
1570 establishment of a protocol for cryopreservation of *A. minuano* semen. According to the  
1571 concentrations tested, 7.5% was the least toxic concentration, presenting the highest values within  
1572 the cryoprotectant, while at its highest concentration (15%), the values showed to be more toxic.  
1573 The negative results observed with the use of glycerol can be due to the fact that it can cause a  
1574 toxic effect to the sperm cell, there being protein denaturation and modifications in the actin  
1575 interactions of the spermatozoa tail, which can interfere in the spermatozoa movement and,  
1576 consequently, in the process of fertilization (Alvarenga, Landim-Alvarenga, Moreira, & Cesarino,  
1577 2000). Similar results were obtained, for example, for equine semen (Pace & Sullivan, 1975) and  
1578 in Indian red jungle (Blesbois et al., 2007; Rakha et al., 2016, 2017).

1579 It is known that, in similar studies, percentages equal to or greater than the results observed  
1580 here were obtained. However, for an endangered species, the spermatic freeze of *A. minuano*  
1581 presents percentages of motility that are efficient for its level of threat; that is to say, although low,  
1582 the mentioned percentages are significantly relevant when considered for a species that is  
1583 threatened.

1584 Based on these results, we propose that the use of cryoprotectants is effective for the  
1585 spermatic preservation of the annual fish *Austrolebias minuano*. In addition, it is emphasized that  
1586 there is a high sensitivity of these spermatozoa to glycerol and we recommend that their use should  
1587 be avoided for preservation purposes. Likewise, the study shows that the combination of BTS®  
1588 and methyl glycol 7.5% showed the best results, both for sperm kinetic parameters and integrity  
1589 and cell biochemistry parameters.

1590

## 1591 **ACKNOWLEDGEMENTS**

1592 We would like to thank the Fundação de Amparo à Pesquisa do Estado do Rio Grande do Sul  
1593 (FAPERGS). We would like to acknowledge the Coordenação de Aperfeiçoamento de Pessoal de



1594 Ensino Superior. C.D. Corcini (Process 306356/2014-7) and A.S. Varela Junior (Process  
1595 307195/2015-7) research fellows from the Brazilian Conselho Nacional de Desenvolvimento  
1596 Científico e Tecnológico (CNPq) and the Fundação Grupo Boticário de Proteção à Natureza  
1597 (Project 1090\_20171) for funding the study. We also inform that all collections were authorized  
1598 by the Brazilian Ministério do Meio Ambiente (MMA), in the form of the Sistema de Autorização  
1599 e Informação em Biodiversidade (SISBIO) (process number 55651-1). This study was also  
1600 approved by the Ethics Committee on Animal Use of the Universidade Federal do Rio Grande  
1601 (process number 23116.008163/2015-23). This study was financed in part by the Coordenação de  
1602 Aperfeiçoamento de Pessoal de Nível Superior - Brasil (CAPES) - Finance Code 001.

1603

1604 **CONFLICT OF INTEREST**

1605 None.

1606

1607

1608

1609

1610

1611

1612

1613

1614

1615

1616

1617

1618

1619 **REFERENCES**

1620

1621 Alvarenga, M. A., Landim-Alvarenga, F. C., Moreira, R. M., & Cesarino, M. M. (2000).

1622 Acrosomal ultrastructure of stallion spermatozoa cryopreserved with ethylene glycol using  
1623 two packaging systems. *Equine Veterinary Journal*, 32(6), 541–545.

1624 Alvarenga, M. A., Papa, F. O., Landim-Alvarenga, F. C., & Medeiros, A. S. L. (2005). Amides

1625 as cryoprotectants for freezing stallion semen: A review. *Animal Reproduction Science*,  
1626 89(1–4), 105–113. <https://doi.org/10.1016/j.anireprosci.2005.07.001>

1627 Alves, J. P., Corcini, C. D., Silva, E. F., Caldas, J. S., Cardoso, T. F., Piedras, S. R. N., ...

1628 Varela, A. S. (2016). The role of amides in seminal cryopreservation of wild silverside,  
1629 *Odontesthes bonariensis*. *Cryobiology*, 73(3), 383–387.

1630 <https://doi.org/10.1016/j.cryobiol.2016.09.001>

1631 Beheregaray, L., Attard, C., Brauer, C., & Hammer, M. (2016). Innovations in conservation:

1632 How genetics can help save freshwater fishes. *Wildlife Australia*, 53(3), 34–37.

1633 <https://doi.org/10.1111/j.1095-8649.1998.tb01039.x>

1634 Blesbois, E., Seigneurin, F., Grasseau, I., Limouzin, C., Besnard, J., Gourichon, D., ... Tixier-

1635 Boichard, M. (2007). Semen cryopreservation for ex situ management of genetic diversity  
1636 in chicken: Creation of the french avian cryobank. *Poultry Science*, 86(3), 555–564.

1637 <https://doi.org/10.1093/ps/86.3.555>

1638 Cabrita, E., Sarasquete, C., Martínez-Páramo, S., Robles, V., Beirão, J., Pérez-Cerezales, S., &

1639 Herráez, M. P. (2010). Cryopreservation of fish sperm: Applications and perspectives.

1640 *Journal of Applied Ichthyology*, 26(5), 623–635. <https://doi.org/10.1111/j.1439->

1641 [0426.2010.01556.x](https://doi.org/10.1111/j.1439-0426.2010.01556.x)

1642 Carneiro, P. C. F., Azevedo, H. C., Santos, J. P., & Maria, A. N. (2012). Cryopreservation of

1643 tambaqui (*Colossoma macropomum*) semen: extenders, cryoprotectants, dilution ratios and

- 1644 freezing methods. *Cryo Letters*, 33(5), 385–393.
- 1645 Carolsfeld, J., Godinho, H. P., Zaniboni Filho, E., & Harvey, B. J. (2003). Cryopreservation of  
1646 sperm in Brazilian migratory fish conservation. *Journal of Fish Biology*, 63(2), 472–489.  
1647 <https://doi.org/10.1046/j.1095-8649.2003.00170.x>
- 1648 Costa, W. J. E. M. (2006). The South American annual killifish genus *Austrolebias* (Teleostei:  
1649 Cyprinodontiformes: Rivulidae): phylogenetic relationships, descriptive, morphology and  
1650 taxonomic revision. *Zootaxa*, 1213, 1–162.
- 1651 Costa, W. J. E. M., & Cheffe, M. M. (2001). Three new annual fishes of the genus *Austrolebias*  
1652 from the laguna dos Patos system, southern Brazil, and a redescription of *A. adloffii* (Ahl)  
1653 (Cyprinodontiformes: Rivulidae). *Comunicações Do Museu de Ciências e Tecnologia Da*  
1654 *PUCRS, Série Zoologia*, 179–200.
- 1655 Domínguez-Rebolledo, A. E., Martínez-Pastor, F., Bisbal, A. F., Ros-Santaella, J. L., García-  
1656 Álvarez, O., Maroto-Morales, A., ... Fernández-Santos, M. R. (2011). Response of thawed  
1657 epididymal red deer spermatozoa to increasing concentrations of hydrogen peroxide, and  
1658 importance of individual male variability. *Reproduction in Domestic Animals*, 46(3), 393–  
1659 403. <https://doi.org/10.1111/j.1439-0531.2010.01677.x>
- 1660 Dziewulska, K., Rzemieniecki, A., Czerniawski, R., & Domagała, J. (2011). Post-thawed  
1661 motility and fertility from Atlantic salmon (*Salmo salar* L.) sperm frozen with four  
1662 cryodiluents in straws or pellets. *Theriogenology*, 76(2), 300–311.  
1663 <https://doi.org/10.1016/j.theriogenology.2011.02.007>
- 1664 Fernández-Gago, R., Domínguez, J. C., & Martínez-Pastor, F. (2013). Seminal plasma applied  
1665 post-thawing affects boar sperm physiology: A flow cytometry study. *Theriogenology*,  
1666 80(4), 400–410. <https://doi.org/10.1016/j.theriogenology.2013.05.003>
- 1667 Figueroa, E., Merino, O., Risopatrón, J., Isachenko, V., Sánchez, R., Effer, B., ... Valdebenito, I.  
1668 (2015). Effect of seminal plasma on Atlantic salmon (*Salmo salar*) sperm vitrification.

1669 *Theriogenology*, 83(2), 238–245. <https://doi.org/10.1016/j.theriogenology.2014.09.015>

1670 Fontana, C. S., Bencke, G. A., & Reis, R. E. (2003). *Livro vermelho da fauna ameaçada de*  
1671 *extinção no Rio Grande do Sul*. Porto Alegre.

1672 Gwo, J.-C., Jamieson, B. G. M., & Leung, L. K.-P. (2009). Live preservation of fish gametes.  
1673 *Reproductive Biology and Phylogeny of Fishes (Agnathans and Bony Fishes)*, (January),  
1674 395–484. <https://doi.org/doi:10.1201/b10257-12>

1675 Hagedorn, M., McCarthy, M., Carter, V. L., & Meyers, S. A. (2012). Oxidative stress in  
1676 zebrafish (*Danio rerio*) sperm. *PLoS ONE*, 7(6), 2–12.  
1677 <https://doi.org/10.1371/journal.pone.0039397>

1678 Hammerstedt, R. O. Y. H., Graham, J. K., & Carolina, S. (1992). Cryopreservation of Poultry  
1679 Sperm: The Enigma of Glycerol. *Cryobiology*, 38, 26–38.

1680 Humphries, P., & Winemiller, K. (2009). Historical Impacts on River Fauna , Shifting Baselines  
1681 , and Challenges for Restoration, 59(8), 673–684. <https://doi.org/10.1525/bio.2009.59.8.9>

1682 ICMbio. (2012). Plano de Ação Nacional para a Conservação dos Peixes Rivulídeos Ameaçados  
1683 de Extinção. Retrieved August 20, 2018, from  
1684 [http://www.icmbio.gov.br/portal/faunabrasileira/plano-de-acao-nacional-lista/2833-plano-](http://www.icmbio.gov.br/portal/faunabrasileira/plano-de-acao-nacional-lista/2833-plano-de-acao-nacional-para-a-conservacao-dos-rivulideos)  
1685 [de-acao-nacional-para-a-conservacao-dos-rivulideos](http://www.icmbio.gov.br/portal/faunabrasileira/plano-de-acao-nacional-lista/2833-plano-de-acao-nacional-para-a-conservacao-dos-rivulideos)

1686 Jenkins, J. A., Draugelis-Dale, R. O., Pinkney, A. E., Iwanowicz, L. R., & Blazer, V. S. (2015).  
1687 Flow cytometric method for measuring chromatin fragmentation in fixed sperm from  
1688 yellow perch (*Perca flavescens*). *Theriogenology*, 83(5), 920–931.  
1689 <https://doi.org/10.1016/j.theriogenology.2014.11.028>

1690 Koneswaran, G., & Nierenberg, D. (2008). Commentary Global Farm Animal Production and  
1691 Global Warming : Impacting and Mitigating Climate Change, 578(5), 578–582.  
1692 <https://doi.org/10.1289/ehp.11034>

1693 MacGregor, W. S. (1967). The Chemical and physical properties of DMSO. *Annals New York*

1694 *Academy of Sciences*, 23(3), 770–774. <https://doi.org/10.1021/ma00205a013>

1695 Maria, A. N., Viveiros, A. T. M., Freitas, R. T. F., & Oliveira, A. V. (2006). Extenders and  
1696 cryoprotectants for cooling and freezing of piracanjuba (*Brycon orbignyanus*) semen, an  
1697 endangered Brazilian teleost fish. *Aquaculture*, 260(1–4), 298–306.  
1698 <https://doi.org/10.1016/j.aquaculture.2006.06.011>

1699 Martínez-Alborcia, M. J., Valverde, A., Parrilla, I., Vazquez, J. M., Martínez, E. A., & Roca, J.  
1700 (2012). Detrimental effects of non-functional spermatozoa on the freezability of functional  
1701 spermatozoa from Boar Ejaculate. *PLoS ONE*, 7(5).  
1702 <https://doi.org/10.1371/journal.pone.0036550>

1703 Martínez-Páramo, S., Pérez-Cerezales, S., Gómez-Romano, F., Blanco, G., Sánchez, J. A., &  
1704 Herráez, M. P. (2009). Cryobanking as tool for conservation of biodiversity: Effect of  
1705 brown trout sperm cryopreservation on the male genetic potential. *Theriogenology*, 71(4),  
1706 594–604. <https://doi.org/10.1016/j.theriogenology.2008.09.034>

1707 Menezes, J. T. B., Queiroz, L. J., Doria, C. R. da C., & Menezes Jr, J. B. (2008). Avaliação  
1708 espermática pós-descongelamento em tambaqui, *Colossoma macropomum* (Cuvier , 1818).  
1709 *Acta Amazonica*, 38(2), 365–368. [https://doi.org/http://dx.doi.org/10.1590/S0044-](https://doi.org/http://dx.doi.org/10.1590/S0044-59672008000200023)  
1710 [59672008000200023](https://doi.org/http://dx.doi.org/10.1590/S0044-59672008000200023).

1711 Nascimento, A. F., Maria, A. N., Pessoa, N. O., Carvalho, M. A. M., & Viveiros, A. T. M.  
1712 (2010). Out-of-season sperm cryopreserved in different media of the Amazonian freshwater  
1713 fish pirapitinga (*Piaractus brachypomus*). *Animal Reproduction Science*, 118(2–4), 324–  
1714 329. <https://doi.org/10.1016/j.anireprosci.2009.07.002>

1715 Olden, J. D., Hogan, Z. S., & Zanden, M. J. Vander. (2007). Small fish, big fish, red fish, blue  
1716 fish: Size-biased extinction risk of the world’s freshwater and marine fishes. *Global*  
1717 *Ecology and Biogeography*, 16(6), 694–701. [https://doi.org/10.1111/j.1466-](https://doi.org/10.1111/j.1466-8238.2007.00337.x)  
1718 [8238.2007.00337.x](https://doi.org/10.1111/j.1466-8238.2007.00337.x)

- 1719 Oliveira, A. V., Viveiros, A. T. M., Maria, A. N., Freitas, R. T. F., & Izaú, Z. A. (2007). Sucesso  
1720 do resfriamento e congelamento de sêmen de pirapitinga *Brycon nattereri*. *Arquivo*  
1721 *Brasileiro de Medicina Veterinária e Zootecnia*, 59(6), 1509–1515.  
1722 <https://doi.org/10.1590/S0102-09352007000600025>
- 1723 Órfão, L.H., Viveiros, A.T.M., Silva, F.P.C., Maria, A. N. (2008). Diluidores e crioprotetores na  
1724 motilidade espermática do sêmen de pacu *Piaractus mesopotamicus*. *45 Reunião da*  
1725 *Sociedade Brasileira de Zootecnia*. Lavras.
- 1726 Pace, M. M., & Sullivan, J. J. (1975). Effect of timing of insemination, numbers of spermatozoa  
1727 and extender components on the pregnancy rate in mares inseminated with frozen stallion  
1728 semen. *Journal of Reproduction and Fertility. Supplement*, (23), 115–121.
- 1729 Pereira, J. R., Pereira, F. A., Perry, C. T., Pires, D. M., Muelbert, J. R. E., Garcia, J. R. E., ...  
1730 Varela, A. S. (2018). Dimethylsulfoxide, methanol and methylglycol in the seminal  
1731 cryopreservation of Suruvi, *Steindachneridion scriptum*. *Animal Reproduction Science*.  
1732 <https://doi.org/10.1016/j.anireprosci.2018.09.024>
- 1733 Pursel, V. G., & Johnson, L. A. (1975). Freezing of boar spermatozoa: fertilizing capacity with  
1734 concentrated semen and a new thawing procedure. *Journal of Animal Science*, 40(1), 99–  
1735 102.
- 1736 Rakha, B. A., Ansari, M. S., Akhter, S., Zafar, Z., Hussain, I., Santiago-Moreno, J., & Blesbois,  
1737 E. (2016). Cryopreservation of Indian red jungle fowl (*Gallus gallus murghi*) semen with  
1738 polyvinylpyrrolidone. *Cryobiology*, 78, 27–33.  
1739 <https://doi.org/10.1016/j.cryobiol.2017.07.006>
- 1740 Rakha, B. A., Ansari, M. S., Akhter, S., Zafar, Z., Naseer, A., Hussain, I., ... Blesbois, E. (2017).  
1741 Dimethyleacetamide improves the cryosurvivability of Indian red jungle fowl (*Gallus*  
1742 *gallus murghi*) sperm. *Theriogenology*, 103, 83–89.  
1743 <https://doi.org/10.1016/j.theriogenology.2017.07.018>

1744 Robles, V., Cabrita, E., Real, M., Álvarez, R., & Herráez, M. P. (2003). Vitrification of turbot  
1745 embryos: Preliminary assays. *Cryobiology*, 47(1), 30–39. <https://doi.org/10.1016/S0011->  
1746 2240(03)00066-X

1747 Rosa, R. S., & Lima, F. C. T. (2008). *Peixes. Livro vermelho da fauna brasileira ameaçada de*  
1748 *extinção*. Brasília: Ministério do Meio Ambiente. Retrieved from  
1749 [http://www.mma.gov.br/estruturas/sbf2008\\_dcbio/\\_publicacao/147\\_publicacao3103200903](http://www.mma.gov.br/estruturas/sbf2008_dcbio/_publicacao/147_publicacao3103200903)  
1750 1646.pdf

1751 Shin, S. J., Lein, D. H., Patten, V. H., & Ruhnke, H. L. (1988). A new antibiotic combination for  
1752 frozen bovine semen. *Theriogenology*, 29(3), 577–591. <https://doi.org/10.1111/jvp.12497>

1753 Silva, J. C., Varela Junior, A. S., Caldas, J. S., da Silva Freitas, C., Botelho, J. G., Colares, E. P.,  
1754 & Corcini, C. D. (2016). The effects of osmolality on sperm quality in *Jenynsia*  
1755 *multidentata* (Cyprinodontiformes: Anablepidae). *Fish Physiology and Biochemistry*, 42(1),  
1756 93–102. <https://doi.org/10.1007/s10695-015-0120-3>

1757 Suzuki, T., Komada, H., Takai, R., Aii, K., & Kozima, T. T. (1995). Relation between Toxicity  
1758 of Cryoprotectant DMSO and Its Concentration in Several Fish Embryos. *Fisheries Science*,  
1759 61(2), 193–197. <https://doi.org/10.2331/fishsci.61.193>

1760 Takagi, M., Otoi, T., & Suzuki, T. (1993). Survival rate of frozen-thawed bovine IVM/IVF  
1761 embryos in relation to post-thaw exposure time in two cryoprotectants. *Cryobiology*, 30(5),  
1762 466–469.

1763 Varela Junior, A. S., Corcini, C. D., Streit Jr., D. P., Rizzoto, G., Jardim, R. D., Lucia Jr., T., &  
1764 Figueiredo, M. R. C. (2012). Efeito do crioprotetor de diferentes concentrações do  
1765 Dimetilsulfóxido no congelamento de sêmen de Tambaqui (*Colossoma macropomum*).  
1766 *Atlântica*, 34(2), 129–137. <https://doi.org/10.5088/atl.2012.34.2.129>

1767 Varela Junior, A. S., Goularte, K. L., Alves, J. P., Pereira, F. A., Silva, E. F., Cardoso, T. F., ...  
1768 Corcini, C. D. (2015). Methods of cryopreservation of Tambaqui semen, *Colossoma*

- 1769 *macropomum*. *Animal Reproduction Science*, 157, 71–77.
- 1770 <https://doi.org/10.1016/j.anireprosci.2015.03.017>
- 1771 Viveiros, A. T. M., Amaral, T. B., Orfão, L. H., Isaú, Z. A., Caneppele, D., & Leal, M. C.
- 1772 (2011). Sperm cryopreservation of tiete tetra *Brycon insignis* (Characiformes): Effects of
- 1773 cryoprotectants, extenders, thawing temperatures and activating agents on motility features.
- 1774 *Aquaculture Research*, 42(6), 858–865. <https://doi.org/10.1111/j.1365-2109.2010.02761.x>
- 1775 Viveiros, A. T. M., & Godinho, H. P. (2009). Sperm quality and cryopreservation of Brazilian
- 1776 freshwater fish species: a review. *Fish Physiology and Biochemistry*, 35(1), 137–150.
- 1777 <https://doi.org/10.1007/s10695-008-9240-3>
- 1778 Viveiros, A. T. M., Maria, A. N., Amaral, T. B., Orfão, L. H., Isau, Z. A., & Veríssimo-Silveira,
- 1779 R. (2012). Spermatozoon ultrastructure and sperm cryopreservation of the Brazilian dry
- 1780 season spawner fish pirapitinga, *Brycon nattereri*. *Aquaculture Research*, 43(4), 546–555.
- 1781 <https://doi.org/10.1111/j.1365-2109.2011.02860.x>
- 1782 Viveiros, A. T. M., Maria, A. N., Orfao, L. H., Carvalho, M. A. M., & Nunes, J. F. (2008).
- 1783 Powder coconut water (ACP (R) as extender for semen cryopreservation of Brazilian
- 1784 migratory fish species. *Cybium*, 32(2), 215.
- 1785 Viveiros, A. T. M., Oliveira, A. V, Maria, A. N., Orfão, L. H., & Souza, J. C. (2009).
- 1786 Sensibilidade dos espermatozoides de dourado (*Salminus brasiliensis*) a diferentes soluções
- 1787 crioprotetoras. *Arq. Bras. Med. Vet. Zootec*, 61(4), 883–889.
- 1788 <https://doi.org/http://dx.doi.org/10.1590/S0102-09352009000400016>.
- 1789 Viveiros, A. T. M., Orfão, L. H., Maria, A. N., & Allaman, I. B. (2009). A simple, inexpensive
- 1790 and successful freezing method for curimba *Prochilodus lineatus* (Characiformes) semen.
- 1791 *Animal Reproduction Science*, 112(3–4), 293–300.
- 1792 <https://doi.org/10.1016/j.anireprosci.2008.04.025>
- 1793 Volcan, M. V., Fonseca, A. P., & Robaldo, R. B. (2011). Reproduction of the threatened Annual



1794 Killifish *Austrolebias nigrofasciatus* (Cyprinodontiformes: Rivulidae), confined in a natural  
1795 environment. *Journal of Threatened Taxa*, 3(6), 1864–1867.

1796 <https://doi.org/10.11609/JoTT.o2575.1864-7>

1797

1798

1799

1800

1801

1802

1803

1804

1805

1806

1807

1808

1809

1810

1811

1812

1813

1814

1815

1816

1817

1818

## CONCLUSÕES E PERSPECTIVAS

1819  
1820  
1821 *Austrolebias minuano* faz parte de populações únicas, que vivem em pequenas poças e que  
1822 se encontram, frequentemente, isoladas (GIBBS, 2000). Essa característica, a construção de  
1823 estradas, a agricultura e o crescimento urbano acelerado podem levar essa espécie à extinção. Além  
1824 disso, barreiras de isolamento reprodutivo podem facilitar os processos de vicariância e especiação  
1825 alopátrica em populações de peixes anuais (BEROIS; GARCÍA; DE SÁ, 2015; RITCHIE, 2007).  
1826 Os trabalhos realizados nessa dissertação, em conjunto, permitiram a caracterização dos níveis de  
1827 diversidade e estruturação genética entre populações já delimitadas de *Austrolebias minuano*, além  
1828 de possibilitar a escolha das populações para realização de processos de preservação do material  
1829 genético.

1830 Nossas análises revelaram que, além de vários casos de níveis significativamente altos de  
1831 diferenciação entre grupos de populações, *A. minuano* é subdividida em pelo menos três diferentes  
1832 grupos populacionais, além de *Austrolebias pongondo*. Isso sugere que a vicariância desempenhou  
1833 um papel importante na diversificação genética de *A. minuano*, corroborando com as nossas  
1834 hipóteses. Além disso, a fragmentação alopátrica parece ser um processo contínuo dentro de *A.*  
1835 *minuano*, onde os valores significativos e altos de FST encontrados entre os quatro grupos de  
1836 populações de *A. minuano* e *A. pongondo* também evidenciam a ocorrência desses processos.

1837 Foi verificado que a Lagoa dos Patos age como uma barreira entre o grupo de população  
1838 minuano 1 e minuano 2 e 3. Além disso, a diferenciação encontrada entre todos os grupos, pelas  
1839 análises concatenadas, induz que pelo menos alguns desses grupos podem se constituir de espécies  
1840 incipientes. Dessa forma, estudos anteriormente realizados, utilizando técnicas moleculares, em  
1841 espécies de peixes anuais mostraram a descoberta de novas espécies (COSTA, 2013). No entanto,  
1842 argumenta-se aqui que é de extrema importância o emprego de análises morfológicas em cada uma  
1843 das populações estudadas, para confirmar se esses grupos são novas espécies de peixes anuais.

1844           Ademais, o processo de congelamento e a comparação entre os crioprotetores utilizados,  
1845 mostraram que é possível realizar o processo de criopreservação de sêmen para o peixe anual *A.*  
1846 *minuano* e que entre os álcoois e diferentes concentrações utilizadas é possível distinguir a  
1847 toxicidade de algumas concentrações e crioprotetores. Portanto, sugere-se que o uso de métodos  
1848 de criopreservação, como instrumento de preservação do patrimônio genético, seja adotado para  
1849 cada uma das populações de *Austrolebias minuano*. Espera-se, também, que as informações  
1850 adquiridas por esses estudos sejam utilizadas na implementação de programas que incentivem a  
1851 proteção desses peixes anuais, e por consequência, desses ambientes.

1852           Ainda que a presente dissertação tenha auxiliado na explicação de algumas questões  
1853 relativas à evolução e utilização da criopreservação como técnica de armazenamento genético em  
1854 espécies de *A. minuano*, é necessário que novos estudos evidenciem alguns aspectos importantes,  
1855 tais como a realização de análises de diversidade para todas as espécies que estão inseridas no  
1856 grupo *Austrolebias adloffii*, realizar avaliações morfológicas em todas as populações que foram  
1857 utilizadas neste estudo, testar outros crioprotetores internos, comparar diferentes formas de  
1858 resfriamento lento e vitrificação para o sêmen de *A. minuano*, bem como aprimorar o protocolo de  
1859 criopreservação para outras espécies pertencentes à família Rivulidae.

1860

1861

1862

1863

1864

1865

1866

1867

1868

1869 **REFERÊNCIAS**

1870

1871 BEROIS, N.; GARCÍA, G.; DE SÁ, R. **Annual Fishes: Life History Strategy, Diversity, and**

1872 **Evolution**. New York: Taylor & Francis Group, 2015. v. 1

1873 COSTA, W. J. E. M. Historical biogeography of aplocheiloid killifishes (Teleostei:

1874 Cyprinodontiformes). **Vertebrate Zoology**, v. 63, n. 2, p. 139–154, 2013.

1875 GIBBS, J. P. Wetland loss and biodiversity conservation. **Conservation Biology**, v. 14, n. 1, p.

1876 314–317, 2000.

1877 RITCHIE, M. G. Sexual Selection and Speciation. **Annual Review Ecology, Evolution, and**

1878 **Systematics**, v. 38, n. 79, p. 102, 2007.

1879